

Office of Institutional Research



Program Review

Institutional Research is asked to provide data for programs under review each reporting cycle. Common definitions are applied to all programs under review, resulting in consistent reporting.

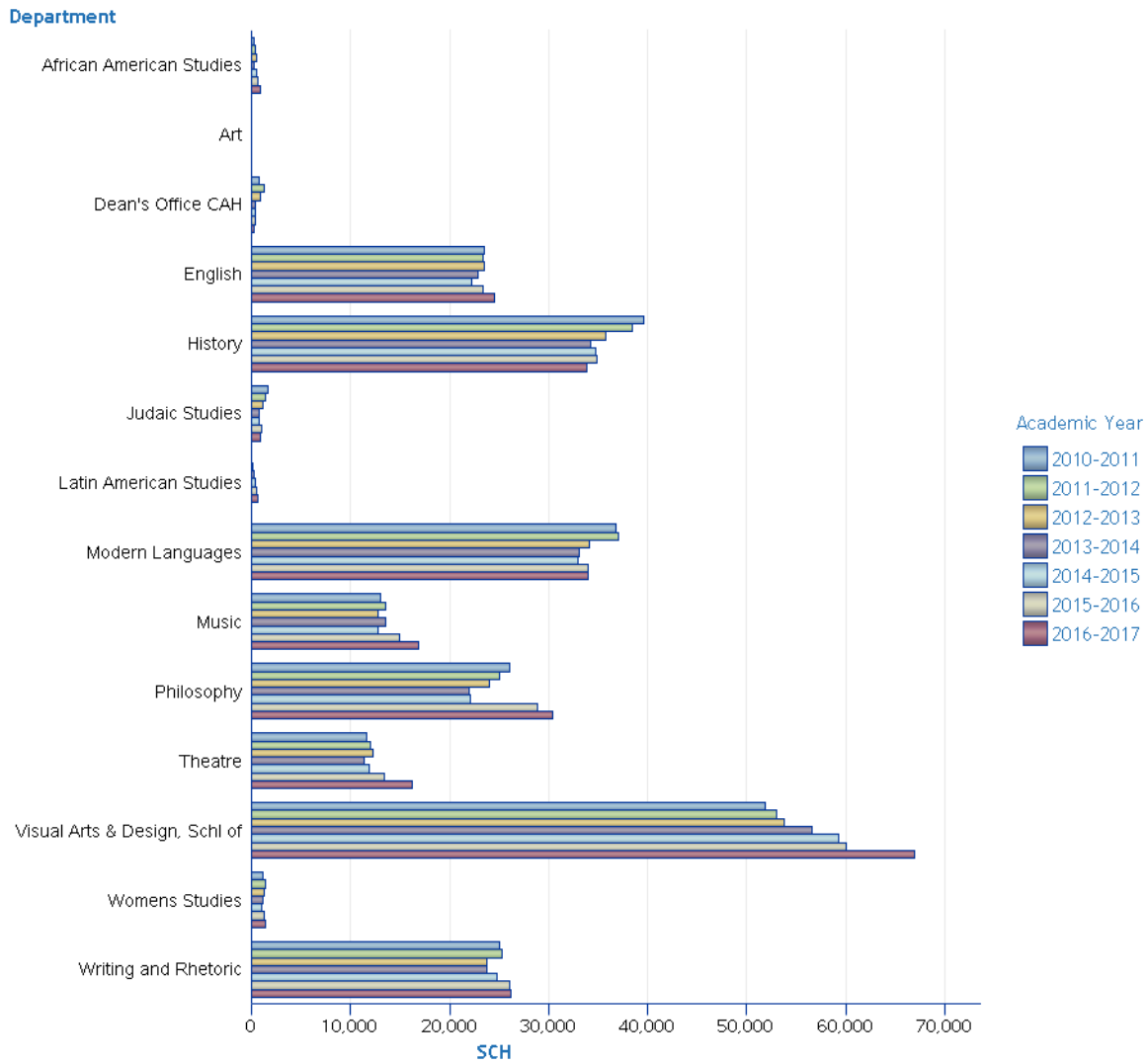
In addition to graphical presentation, many measures include numeric counts of data. The user is cautioned to consider the number of records used in an average. In some cases, a low 'N' may generate results which may be misinterpreted.

Sources:

- Contracts & Grants – Dollars & Awards – Office of Research & Commercialization
- Count of Applications – Admissions File
- Degrees Granted and Time-to-Degree – Degrees Awarded
- Headcount and Demographic details – Student Instruction File
- Instructional Faculty FTE – Fall Staff File
- Projected Headcount and Degrees – UCF Enrollment and Degree Program Level Projections
- Scores – SAT, ACT, HS GPA, GRE, and GMAT – Student Instruction File and Scores Table
- Student Credit Hours (SCH), Class Size, and Count of Sections – Student Data Course File

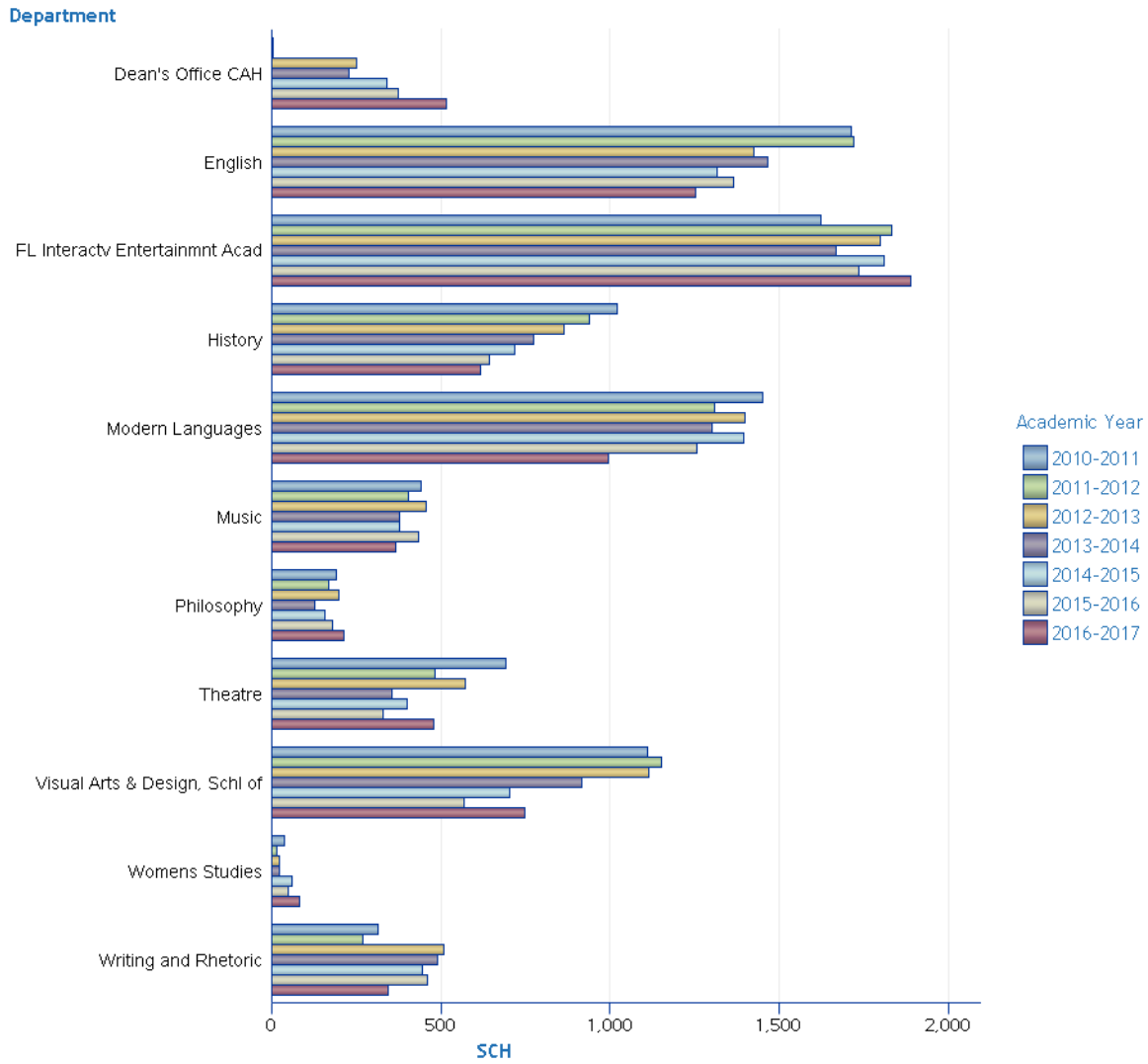
College of Arts & Humanities

Total Student Credit Hours by Department - Undergraduate



			SCH						
Academic Year			2010-2011	2011-2012	2012-2013	2013-2014	2014-2015	2015-2016	2016-2017
Career	College	Department							
Undergraduate	College of Arts & Humanities	African American Studies	306	447	459	306	495	657	900
		Art	.	9	.	3	.	.	.
		Dean's Office CAH	811	1,250	930	375	442	437	312
		English	23,494	23,406	23,539	22,856	22,176	23,339	24,513
		History	39,662	38,405	35,787	34,205	34,693	34,827	33,806
		Judaic Studies	1,628	1,407	1,189	808	827	996	870
		Latin American Studies	.	.	162	224	344	502	612
		Modern Languages	36,807	37,036	34,068	33,055	32,913	34,028	33,946
		Music	13,012	13,489	12,823	13,573	12,800	14,945	16,808
		Philosophy	26,100	25,079	24,023	21,966	22,156	28,885	30,350
		Theatre	11,613	12,013	12,281	11,427	11,908	13,434	16,273
		Visual Arts & Design, Schl of	51,883	53,032	53,744	56,639	59,213	60,013	66,932
		Womens Studies	1,157	1,386	1,325	1,170	1,011	1,248	1,389
		Writing and Rhetoric	25,011	25,236	23,771	23,727	24,729	26,079	26,217
Total		231,484	232,195	224,101	220,334	223,707	239,390	252,928	

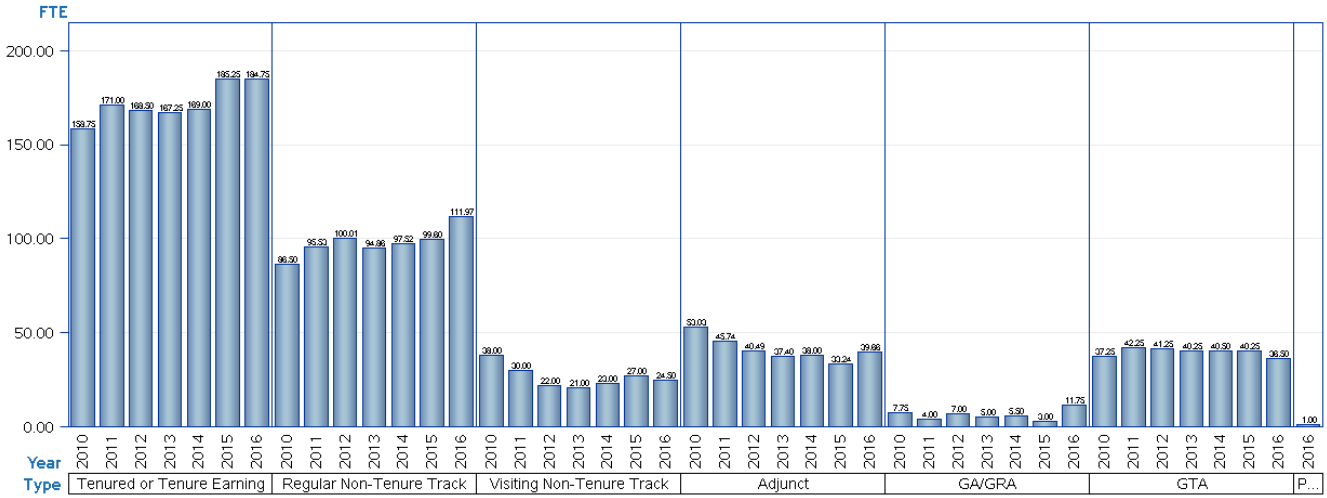
Total Student Credit Hours by Department - Graduate



Academic Year			SCH						
Career	College	Department	2010-2011	2011-2012	2012-2013	2013-2014	2014-2015	2015-2016	2016-2017
Graduate	College of Arts & Humanities	Dean's Office CAH	3	4	249	229	339	373	515
		English	1,711	1,721	1,423	1,465	1,315	1,363	1,252
		FL Interactv Entertainmnt Acad	1,623	1,830	1,797	1,668	1,809	1,734	1,887
		History	1,021	937	862	772	716	643	617
		Modern Languages	1,450	1,308	1,397	1,302	1,395	1,255	993
		Music	440	403	457	377	377	433	367
		Philosophy	192	168	198	126	156	180	213
		Theatre	690	483	571	355	399	329	479
		Visual Arts & Design, Schl of	1,112	1,150	1,113	915	703	567	747
		Womens Studies	36	15	24	24	60	48	81
		Writing and Rhetoric	315	271	510	489	444	459	345
Total			8,593	8,290	8,601	7,722	7,713	7,384	7,496

College of Arts & Humanities

Faculty FTE

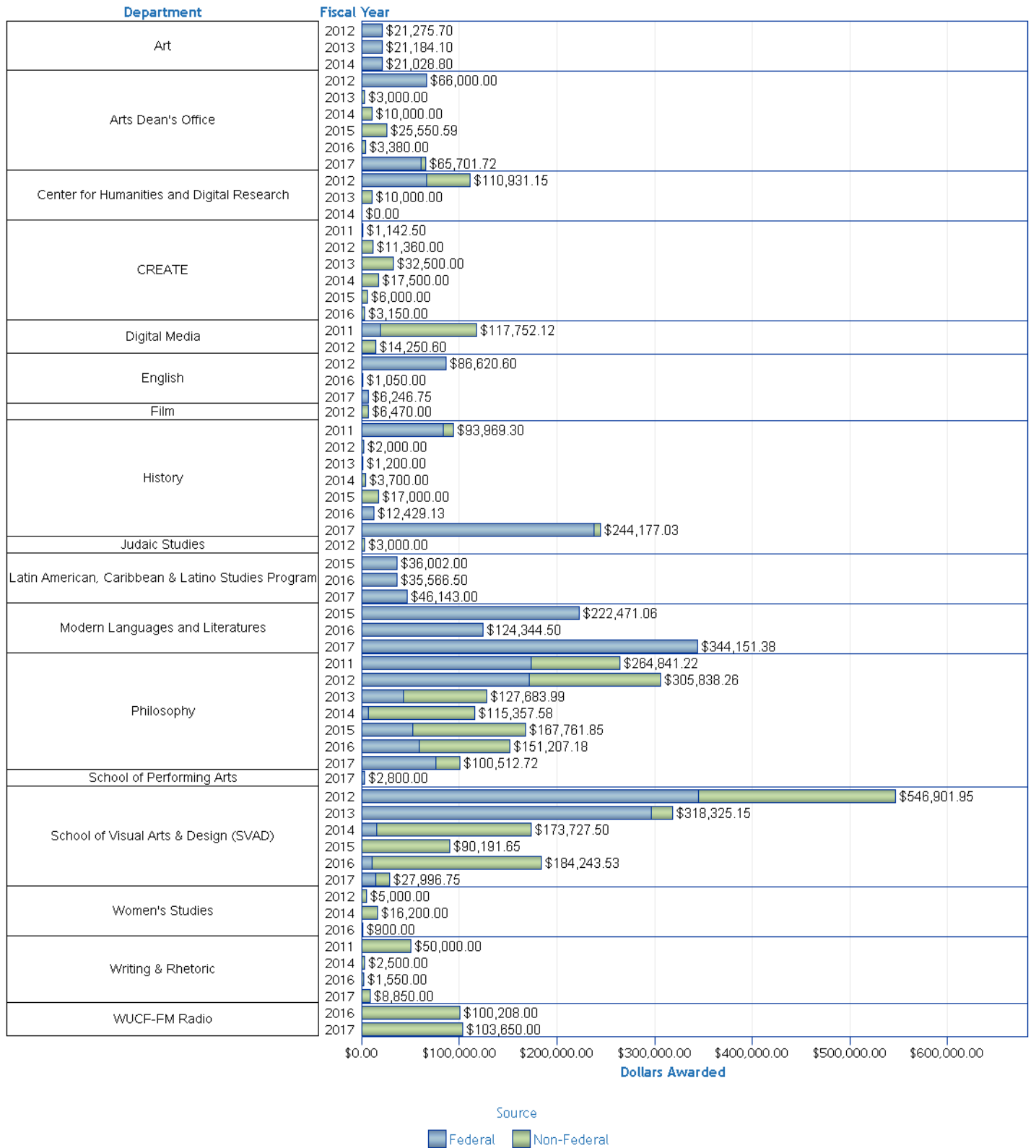


Year		2010		2011		2012		2013		2014		2015		2016	
College	Type	FTE	N	FTE	N	FTE	N	FTE	N	FTE	N	FTE	N	FTE	N
College of Arts & Humanities	Tenured or Tenure Earning	158.75	160	171.00	172	168.50	170	167.25	169	169.00	169	185.25	186	184.75	186
	Regular Non-Tenure Track	86.50	98	95.53	103	100.01	107	94.86	98	97.52	103	99.60	105	111.97	118
	Visiting Non-Tenure Track	38.00	38	30.00	30	22.00	22	21.00	21	23.00	23	27.00	27	24.50	25
	Adjunct	53.03	111	45.74	109	40.49	89	37.40	86	38.00	92	33.24	84	39.66	95
	GA/GRA	7.75	18	4.00	10	7.00	16	5.00	10	5.50	12	3.00	6	11.75	27
	GTA	37.25	75	42.25	89	41.25	83	40.25	81	40.50	82	40.25	81	36.50	75
	Post Doctoral Associate	1.00
Total		381.28	500	388.52	513	379.25	487	365.76	465	373.52	481	388.34	489	410.13	527

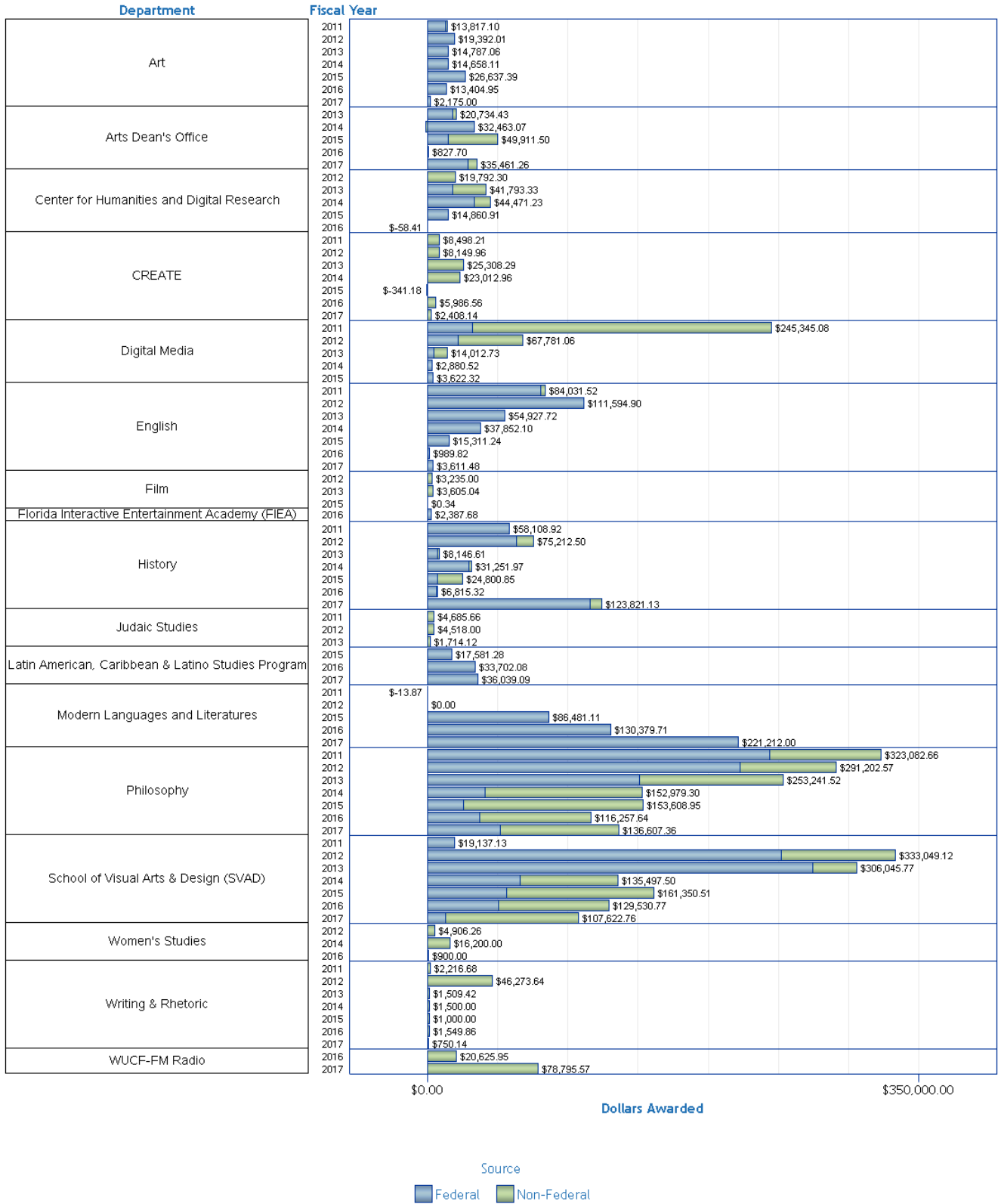
Includes Faculty FTE based on Primary Department.
Faculty FTE includes Dual Comp FTE (when applicable).

College of Arts & Humanities

Contracts and Grants - Awards



Contracts and Grants - Expenditures



Awards

College		Dollars Awarded		Total
		Federal	Non-Federal	
Source	Fiscal Year			
Department				
Art	2012	\$21,275.70	.	\$21,275.70
	2013	\$21,184.10	.	\$21,184.10
	2014	\$21,028.80	.	\$21,028.80
Arts Dean's Office	2012	\$66,000.00	.	\$66,000.00
	2013	.	\$3,000.00	\$3,000.00
	2014	.	\$10,000.00	\$10,000.00
	2015	.	\$25,550.59	\$25,550.59
	2016	.	\$3,380.00	\$3,380.00
CREATE	2017	\$60,801.72	\$4,900.00	\$65,701.72
	2011	.	\$1,142.50	\$1,142.50
	2012	.	\$11,360.00	\$11,360.00
	2013	.	\$32,500.00	\$32,500.00
	2014	.	\$17,500.00	\$17,500.00
	2015	.	\$6,000.00	\$6,000.00
Center for Humanities and Digital Research	2016	.	\$3,150.00	\$3,150.00
	2012	\$66,000.00	\$44,931.15	\$110,931.15
	2013	.	\$10,000.00	\$10,000.00
Digital Media	2014	.	\$0.00	\$0.00
	2011	\$19,332.20	\$98,419.92	\$117,752.12
English	2012	.	\$14,250.60	\$14,250.60
	2012	\$86,620.60	.	\$86,620.60
Film	2016	\$1,050.00	.	\$1,050.00
	2017	\$6,246.75	.	\$6,246.75
History	2012	.	\$6,470.00	\$6,470.00
	2011	\$83,470.80	\$10,498.50	\$93,969.30
	2012	.	\$2,000.00	\$2,000.00
	2013	.	\$1,200.00	\$1,200.00
	2014	.	\$3,700.00	\$3,700.00
	2015	.	\$17,000.00	\$17,000.00
	2016	\$12,429.13	.	\$12,429.13
Judaic Studies	2017	\$237,777.03	\$6,400.00	\$244,177.03
	2012	.	\$3,000.00	\$3,000.00
Latin American, Caribbean & Latino Studies Program	2015	\$36,002.00	.	\$36,002.00
	2016	\$35,566.50	.	\$35,566.50
	2017	\$46,143.00	.	\$46,143.00
Modern Languages and Literatures	2015	\$222,471.06	.	\$222,471.06
	2016	\$124,344.50	.	\$124,344.50
	2017	\$344,151.38	.	\$344,151.38
Philosophy	2011	\$173,419.45	\$91,421.78	\$264,841.22
	2012	\$171,093.08	\$134,745.18	\$305,838.26
	2013	\$42,392.25	\$85,291.74	\$127,683.99
	2014	\$6,522.64	\$108,834.94	\$115,357.58
	2015	\$52,368.00	\$115,393.85	\$167,761.85
	2016	\$58,500.00	\$92,707.18	\$151,207.18
School of Performing Arts	2017	\$75,500.00	\$25,012.72	\$100,512.72
	2017	\$2,800.00	.	\$2,800.00
School of Visual Arts & Design (SVAD)	2012	\$345,403.95	\$201,498.00	\$546,901.95
	2013	\$296,307.15	\$22,018.00	\$318,325.15
	2014	\$14,779.80	\$158,947.70	\$173,727.50
	2015	.	\$90,191.65	\$90,191.65
	2016	\$10,875.00	\$173,368.53	\$184,243.53
WUCF-FM Radio	2017	\$14,646.75	\$13,350.00	\$27,996.75
	2016	.	\$100,208.00	\$100,208.00
Women's Studies	2017	.	\$103,650.00	\$103,650.00
	2012	.	\$5,000.00	\$5,000.00
	2014	.	\$16,200.00	\$16,200.00

Expenditures

Source		Dollars Awarded		
		Federal	Non-Federal	Total
Department	Fiscal Year			
Art	2011	\$12,758.09	\$1,059.01	\$13,817.10
	2012	\$19,392.01	.	\$19,392.01
	2013	\$14,787.06	.	\$14,787.06
	2014	\$14,658.11	.	\$14,658.11
	2015	\$26,637.39	.	\$26,637.39
	2016	\$13,404.95	.	\$13,404.95
	2017	\$2,175.00	.	\$2,175.00
Arts Dean's Office	2013	\$17,734.43	\$3,000.00	\$20,734.43
	2014	\$33,463.07	\$-1,000.00	\$32,463.07
	2015	\$14,860.91	\$35,050.59	\$49,911.50
	2016	\$-58.41	\$886.12	\$827.70
CREATE	2017	\$28,501.01	\$6,960.24	\$35,461.26
	2011	.	\$8,498.21	\$8,498.21
	2012	.	\$8,149.96	\$8,149.96
	2013	.	\$25,308.29	\$25,308.29
	2014	.	\$23,012.96	\$23,012.96
	2015	.	\$-341.18	\$-341.18
	2016	.	\$5,986.56	\$5,986.56
Center for Humanities and Digital Research	2017	.	\$2,408.14	\$2,408.14
	2012	.	\$19,792.30	\$19,792.30
	2013	\$17,734.43	\$24,058.90	\$41,793.33
	2014	\$33,463.07	\$11,008.16	\$44,471.23
	2015	\$14,860.91	.	\$14,860.91
Digital Media	2016	\$-58.41	.	\$-58.41
	2011	\$31,732.45	\$213,612.62	\$245,345.08
	2012	\$21,957.15	\$45,823.91	\$67,781.06
	2013	\$4,382.69	\$9,630.04	\$14,012.73
	2014	\$2,880.52	.	\$2,880.52
English	2015	\$3,622.32	\$0.00	\$3,622.32
	2011	\$80,853.67	\$3,177.85	\$84,031.52
	2012	\$111,594.90	.	\$111,594.90
	2013	\$54,927.72	.	\$54,927.72
	2014	\$37,852.10	.	\$37,852.10
	2015	\$15,311.24	.	\$15,311.24
	2016	\$989.82	.	\$989.82
Film	2017	\$3,611.48	.	\$3,611.48
	2012	.	\$3,235.00	\$3,235.00
	2013	.	\$3,605.04	\$3,605.04
Florida Interactive Entertainment Academy (FIEA)	2015	.	\$0.34	\$0.34
	2016	\$2,387.68	.	\$2,387.68
History	2011	\$58,108.92	.	\$58,108.92
	2012	\$63,502.00	\$11,710.50	\$75,212.50
	2013	\$7,357.61	\$789.00	\$8,146.61
	2014	\$29,600.95	\$1,651.02	\$31,251.97
	2015	\$7,244.64	\$17,556.21	\$24,800.85
	2016	\$6,532.24	\$283.08	\$6,815.32
	2017	\$115,740.86	\$8,080.27	\$123,821.13
Judaic Studies	2011	.	\$4,685.66	\$4,685.66
	2012	.	\$4,518.00	\$4,518.00
Latin American, Caribbean & Latino Studies Program	2013	.	\$1,714.12	\$1,714.12
	2015	\$17,581.28	.	\$17,581.28
	2016	\$33,702.08	.	\$33,702.08
Modern Languages and Literatures	2017	\$36,039.09	.	\$36,039.09
	2011	.	\$-13.87	\$-13.87
	2012	\$0.00	.	\$0.00
	2015	\$86,481.11	.	\$86,481.11
	2016	\$130,379.71	.	\$130,379.71

Awards

College		Dollars Awarded		Total
Source	Fiscal Year	Federal	Non-Federal	
Women's Studies	2016	\$900.00	.	\$900.00
	2011	.	\$50,000.00	\$50,000.00
Writing & Rhetoric	2014	.	\$2,500.00	\$2,500.00
	2016	.	\$1,550.00	\$1,550.00
	2017	.	\$8,850.00	\$8,850.00

Expenditures

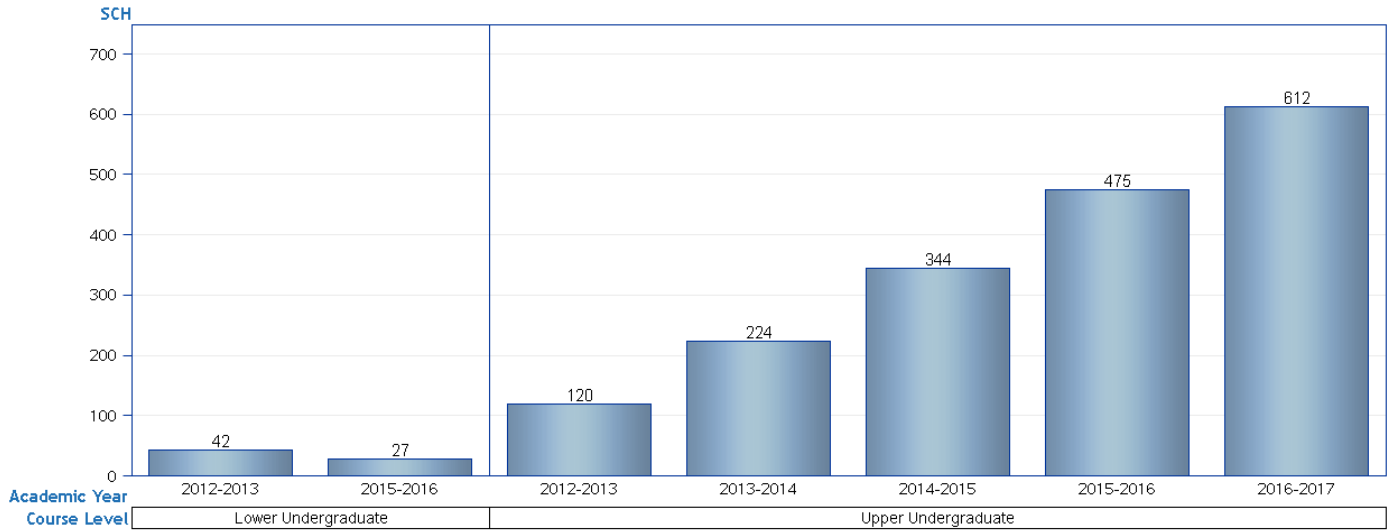
Source		Dollars Awarded		
Department	Fiscal Year	Federal	Non-Federal	Total
Modern Languages and Literatures	2017	\$221,212.00	.	\$221,212.00
	2011	\$244,103.72	\$78,978.94	\$323,082.66
	2012	\$222,712.47	\$68,490.10	\$291,202.57
	2013	\$151,073.66	\$102,167.85	\$253,241.52
Philosophy	2014	\$40,983.07	\$111,996.23	\$152,979.30
	2015	\$25,376.27	\$128,232.68	\$153,608.95
	2016	\$37,405.34	\$78,852.29	\$116,257.64
	2017	\$51,915.16	\$84,692.20	\$136,607.36
	2011	\$19,137.13	.	\$19,137.13
	2012	\$251,880.69	\$81,168.43	\$333,049.12
	2013	\$274,742.73	\$31,303.04	\$306,045.77
School of Visual Arts & Design (SVAD)	2014	\$65,842.96	\$69,654.54	\$135,497.50
	2015	\$56,560.64	\$104,789.87	\$161,350.51
	2016	\$50,355.18	\$79,175.59	\$129,530.77
	2017	\$12,595.39	\$95,027.37	\$107,622.76
WUCF-FM Radio	2016	.	\$20,625.95	\$20,625.95
	2017	.	\$78,795.57	\$78,795.57
	2012	.	\$4,906.26	\$4,906.26
Women's Studies	2014	.	\$16,200.00	\$16,200.00
	2016	\$900.00	.	\$900.00
	2011	.	\$2,216.68	\$2,216.68
	2012	.	\$46,273.64	\$46,273.64
	2013	.	\$1,509.42	\$1,509.42
Writing & Rhetoric	2014	.	\$1,500.00	\$1,500.00
	2015	.	\$1,000.00	\$1,000.00
	2016	.	\$1,549.86	\$1,549.86
	2017	.	\$750.14	\$750.14

Dollar amounts are shared between PI's and Co-PI's. Awards are credited in full to PI's.
This can sometimes result in data that displays dollars but no corresponding counts in new or incremental awards.

College of Arts & Humanities

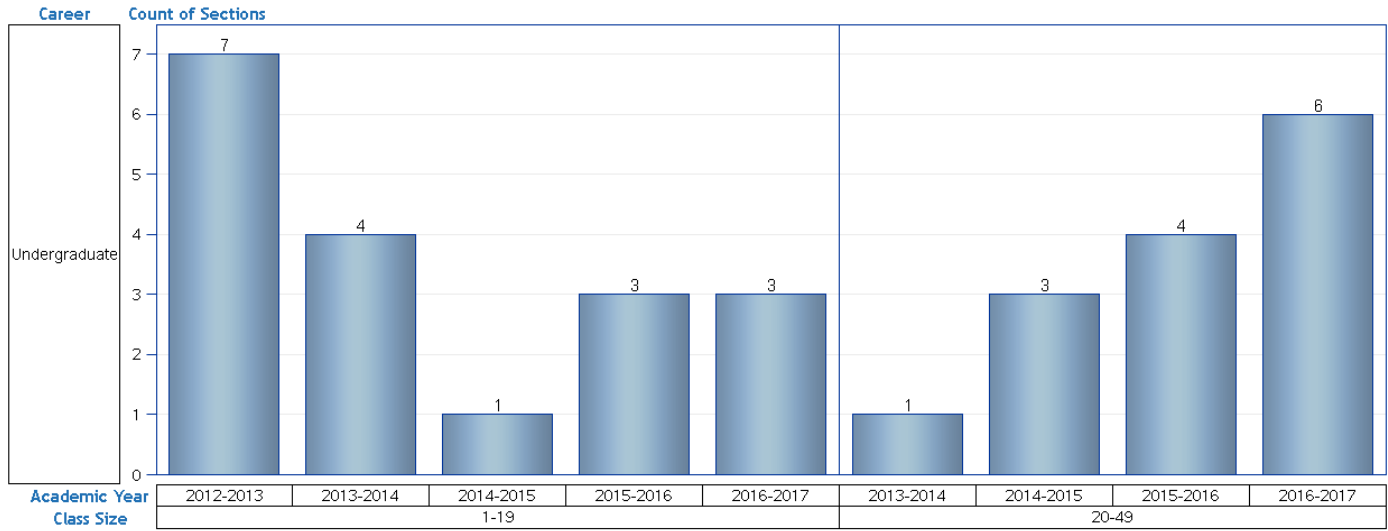
Latin American Studies

Total Student Credit Hours by Course Level



Academic Year		SCH				
		2012-2013	2013-2014	2014-2015	2015-2016	2016-2017
Department	Course Level					
	Lower Undergraduate	42	.	.	27	.
Latin American Studies	Upper Undergraduate	120	224	344	475	612
Total		162	224	344	502	612

Count of Sections - Lecture



Academic Year				Count of Sections				
				2012-2013	2013-2014	2014-2015	2015-2016	2016-2017
Department	Career	Course Component	Class Size					
			1-19	7	4	1	3	3
Latin American Studies	Undergraduate	Lecture	20-49	.	1	3	4	6

College of Arts & Humanities

Latin American Studies

Total Student Credit Hours by Course Location

Academic Year		Student Credit Hours					%				
		2012-2013	2013-2014	2014-2015	2015-2016	2016-2017	2012-2013	2013-2014	2014-2015	2015-2016	2016-2017
Department	Course Location										
Latin American Studies	Main Campus (Orlando)	162.0	146.0	14.0	97.0	42.0	100.00%	65.18%	4.07%	19.32%	6.86%
	Main Off Campus	.	78.0	330.0	405.0	570.0	.	34.82%	95.93%	80.68%	93.14%
Total		162.0	224.0	344.0	502.0	612.0	100.00%	100.00%	100.00%	100.00%	100.00%

Total Student Credit Hours by Course Instruction Mode

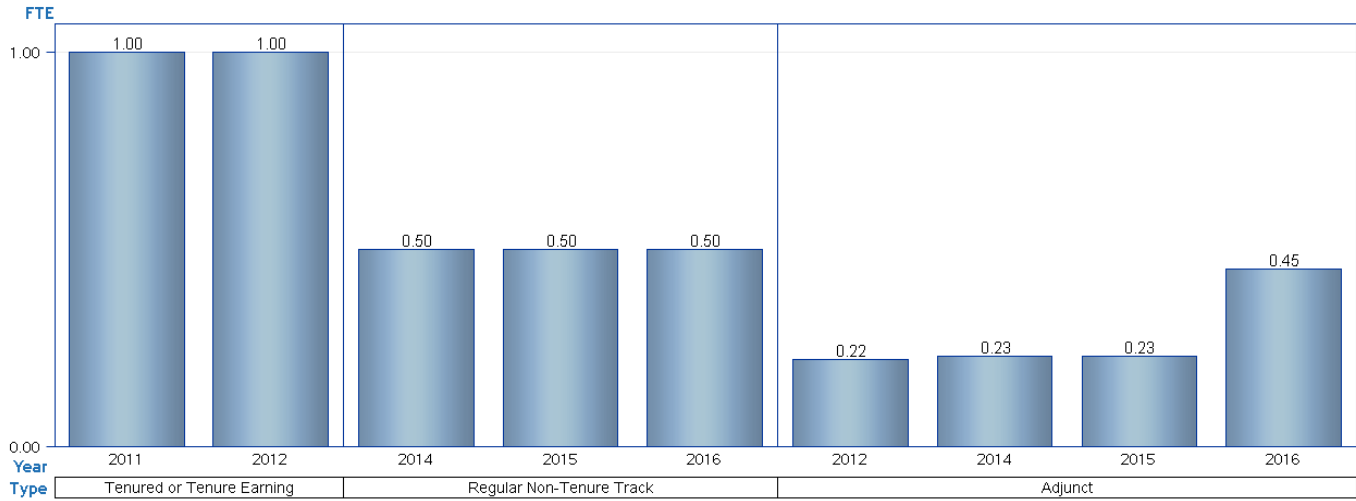
Academic Year		Student Credit Hours					%				
		2012-2013	2013-2014	2014-2015	2015-2016	2016-2017	2012-2013	2013-2014	2014-2015	2015-2016	2016-2017
Department	Course Instruction Mode										
Latin American Studies	Face to Face Instruction (P)	162.0	101.0	14.0	145.0	84.0	100.00%	45.09%	4.07%	28.88%	13.73%
	Mixed Mode/ReducedSeatTime (M)	.	45.0	20.09%	.	.	.
	World Wide Web (W)	.	78.0	330.0	357.0	528.0	.	34.82%	95.93%	71.12%	86.27%
Total		162.0	224.0	344.0	502.0	612.0	100.00%	100.00%	100.00%	100.00%	100.00%

Office of Institutional Research. Source: Student Credit Hours Fact. [Printed on: Friday, July 28, 2017 4:42:20 PM EDT]

College of Arts & Humanities

Latin American Studies

Faculty FTE

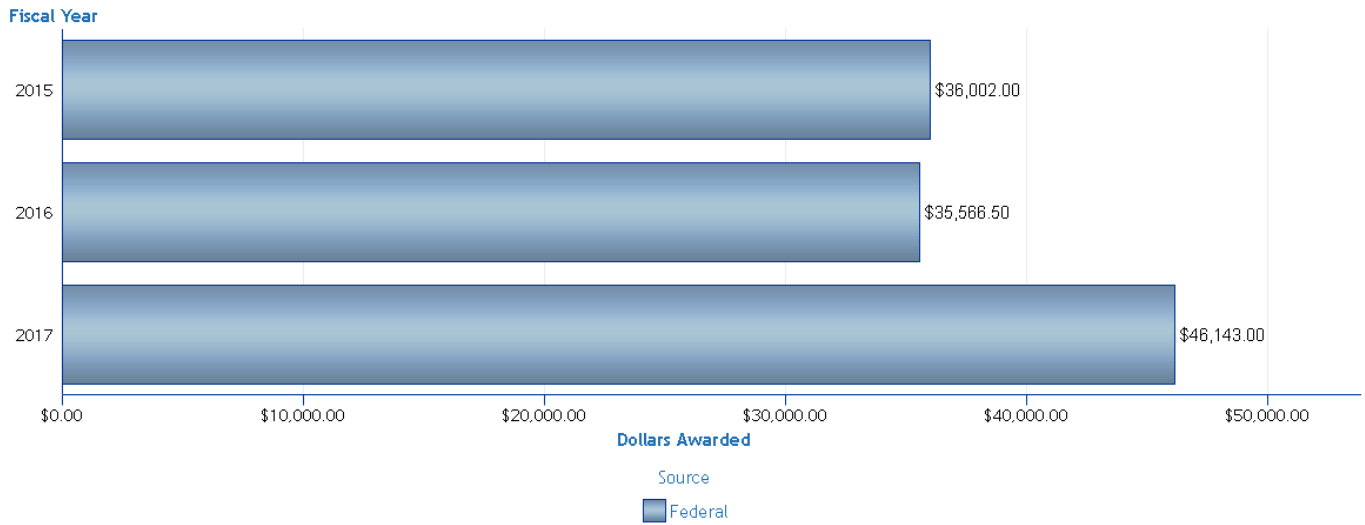


Year		2011		2012		2014		2015		2016	
Department	Type	FTE	N	FTE	N	FTE	N	FTE	N	FTE	N
Latin American Studies	Tenured or Tenure Earning	1.00	1	1.00	1
	Regular Non-Tenure Track	0.50	1	0.50	1	0.50	1
	Adjunct	.	.	0.22	1	0.23	1	0.23	1	0.45	1
Total		1.00	1	1.22	2	0.73	2	0.73	2	0.95	2

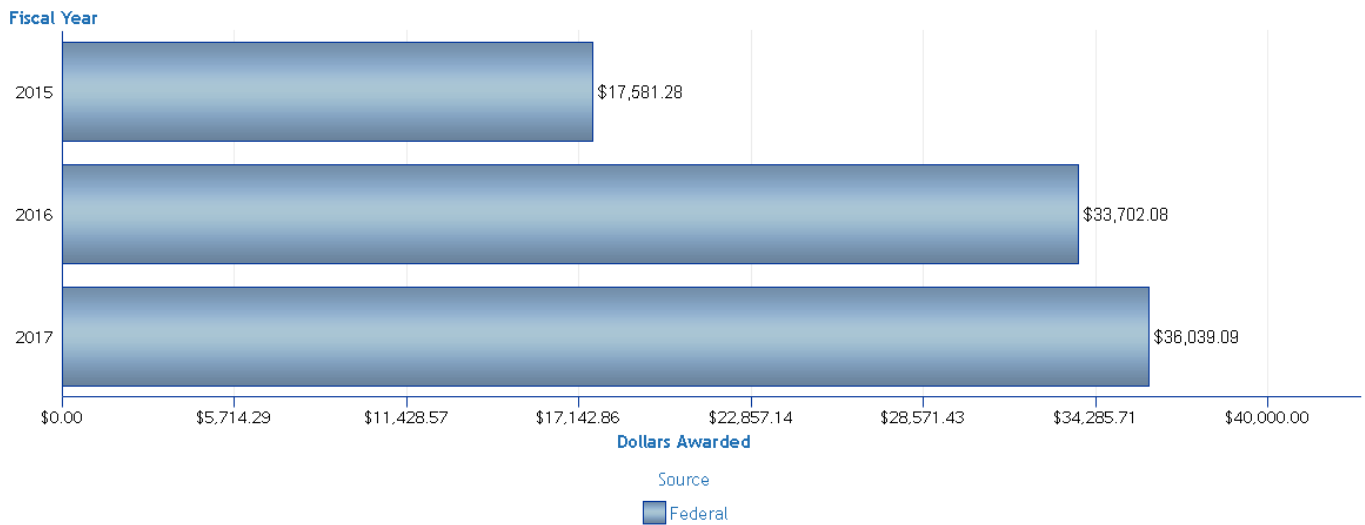
Includes Faculty FTE based on Primary Department.
Faculty FTE includes Dual Comp FTE (when applicable).

College of Arts & Humanities Latin American, Caribbean & Latino Studies Program

Contracts and Grants - Awards



Contracts and Grants - Expenditures



Awards

Source	Federal	Total
	Dollars Awarded	Dollars Awarded
Fiscal Year		
2015	\$36,002.00	\$36,002.00
2016	\$35,566.50	\$35,566.50
2017	\$46,143.00	\$46,143.00

Expenditures

Source	Federal	Total
	Dollars Awarded	Dollars Awarded
Fiscal Year		
2015	\$17,581.28	\$17,581.28
2016	\$33,702.08	\$33,702.08
2017	\$36,039.09	\$36,039.09

Counts of New and Continuing Awards

Source	Federal	
	New	Incremental
Fiscal Year		
2015	1	0
2016	0	1
2017	1	0

Total Amount = funding received from external sources in the given fiscal year for the department.
(This amount is using credit splits when awards are shared among departments)

Incremental counts reflect awards that continue past the initial year.

Dollar amounts are shared between PI's and Co-PI's. Awards are credited in full to PI's
This can sometimes result in data that displays dollars but no corresponding counts in new or incremental awards.

College of Arts & Humanities

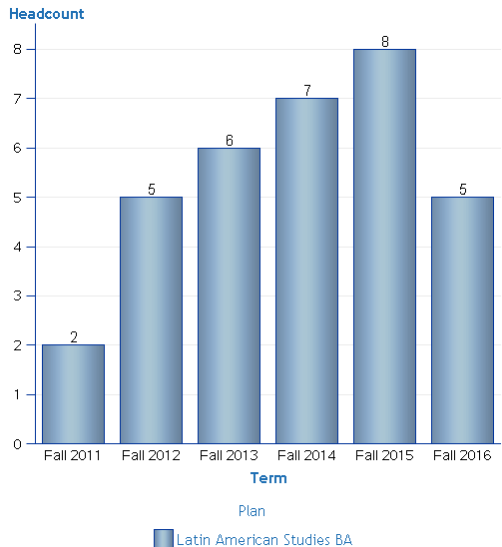
Latin American Studies

Undergraduate

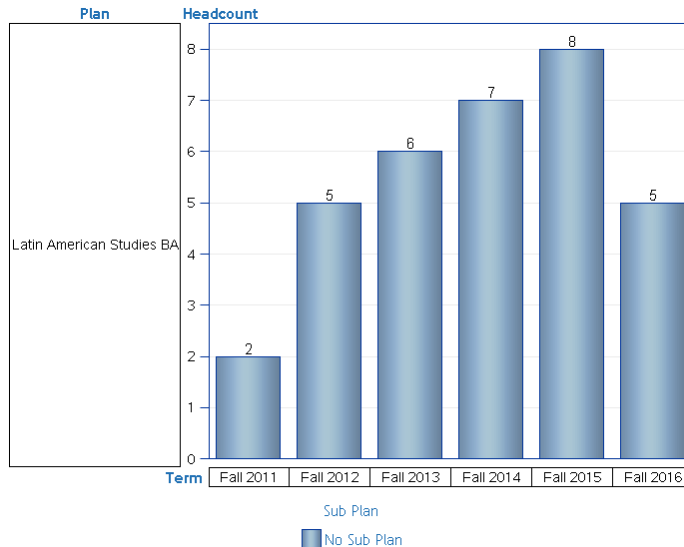
CIP	Plan	Sub Plan
05.0107	Latin American Studies BA	No Sub Plan

Pending Majors are not displayed in charts

Headcount in Major by Plan



Headcount in Major by Plan and Sub Plan



		Term					
		Fall 2011	Fall 2012	Fall 2013	Fall 2014	Fall 2015	Fall 2016
Headcount	Plan Type	Plan					
	MAJ	Latin American Studies BA					
	Total	2	5	6	7	8	5

		Term					
		Fall 2011	Fall 2012	Fall 2013	Fall 2014	Fall 2015	Fall 2016
Headcount	Plan Type	Plan		Sub Plan			
	MAJ	Latin American Studies BA		No Sub Plan			
	Total	2	5	6	7	8	5

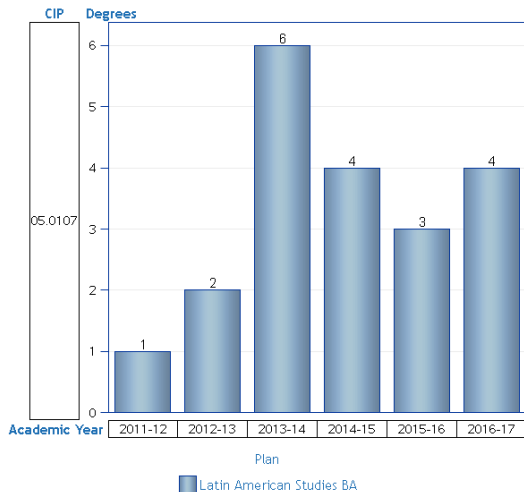
No values were returned for this table.

College of Arts & Humanities

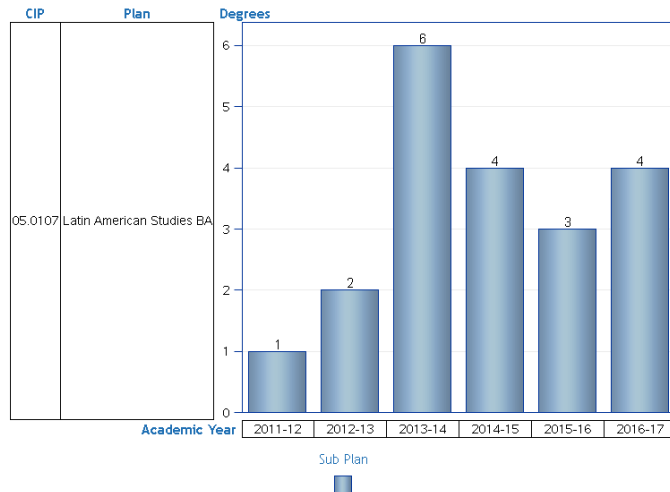
Latin American Studies

Undergraduate

Degrees Granted by Plan



Degrees Granted by Plan and Sub Plan



		Academic Year					
CIP	Plan	2011-12	2012-13	2013-14	2014-15	2015-16	2016-17
Degrees	05.0107 Latin American Studies BA	1	2	6	4	3	4
	Total	1	2	6	4	3	4

		Academic Year						
CIP	Plan	Sub Plan	2011-12	2012-13	2013-14	2014-15	2015-16	2016-17
Degrees	05.0107 Latin American Studies BA		1	2	6	4	3	4
	Total		1	2	6	4	3	4

Honors in the Major Awarded

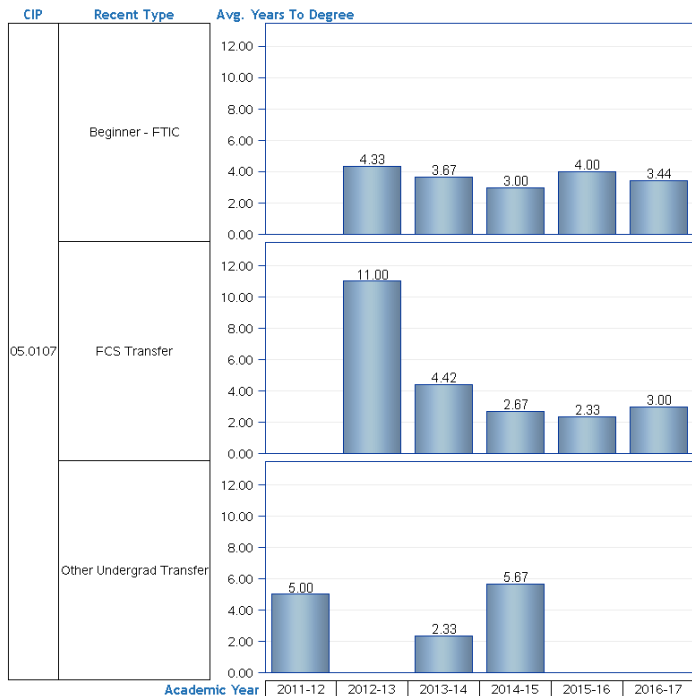
No values were returned for this table.

Minors and Undergraduate Certificates Awarded

					Academic Year						
Degrees	Department	CIP	Degree Type	Plan	2010-11	2011-12	2012-13	2013-14	2014-15	2015-16	2016-17
					Latin American Studies	05.0107	Minor	Latin American Studies Minor	35	23	11
			Subtotal	Subtotal	35	23	11	13	9	7	10
			Subtotal	Subtotal	35	23	11	13	9	7	10
			Subtotal	Subtotal	35	23	11	13	9	7	10
			Total	Subtotal	35	23	11	13	9	7	10

Time to Degree

Includes enrolled and non-enrolled semesters. A year is 3 semesters



CIP	Degree Level	Plan	Recent Type	Academic Year	N	Avg. Years To Degree
05.0107	Bachelor	Latin American Studies BA	Beginner - FTIC	2012-13	1	4.33
				2013-14	1	3.67
				2014-15	2	3.00
				2015-16	1	4.00
				2016-17	3	3.44
			FCS Transfer	2012-13	1	11.00
				2013-14	4	4.42
				2014-15	1	2.67
				2015-16	2	2.33
			Other Undergrad Transfer	2016-17	1	3.00
				2011-12	1	5.00
				2013-14	1	2.33
			2014-15	1	5.67	

Range Acad Years to Degree					>2 and <=3		>3 and <=4		>4 and <= 5		>5 and <=6		> 6		Total			
CIP	Degree Level	Plan	Recent Type	Academic Year	N	%	N	%	N	%	N	%	N	%	N	%		
05.0107	Bachelor	Latin American Studies BA	Beginner - FTIC	2012-13	1	100.00%	1	100.00%		
				2013-14	.	.	1	100.00%	1	100.00%		
				2014-15	2	100.00%	2	100.00%	
				2015-16	.	.	1	100.00%	1	100.00%	
				2016-17	1	33.33%	1	33.33%	1	33.33%	3	100.00%	
			FCS Transfer	2012-13	1	100.00%	.	1	100.00%
				2013-14	1	25.00%	1	25.00%	1	25.00%	.	.	1	25.00%	.	4	100.00%	
				2014-15	1	100.00%	1	100.00%	
				2015-16	2	100.00%	2	100.00%	
			Other Undergrad Transfer	2016-17	1	100.00%	1	100.00%
				2011-12	1	100.00%	1	100.00%
				2013-14	1	100.00%	1	100.00%
			2014-15	1	100.00%	.	.	1	100.00%			

College of Arts & Humanities

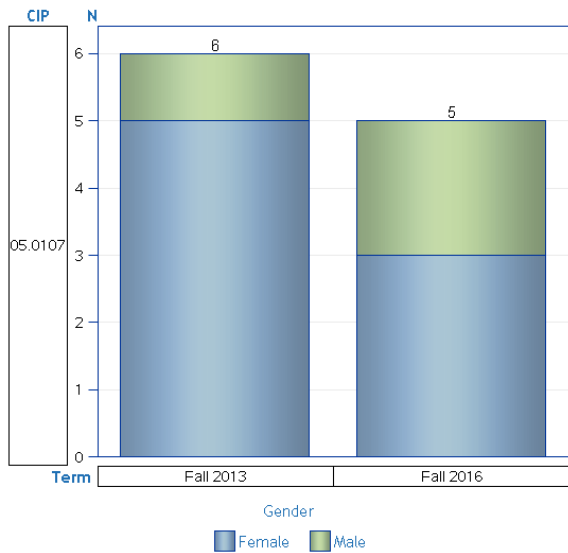
Latin American Studies

Undergraduate

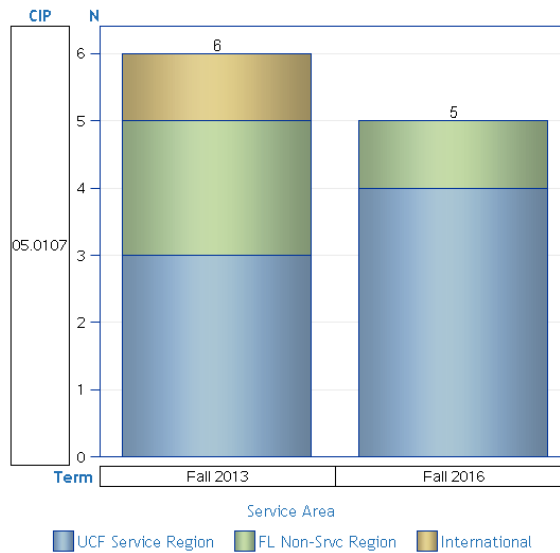
CIP	Plan	Sub Plan
05.0107	Latin American Studies BA	No Sub Plan

Excludes students in a Pending Major

Headcount by Gender



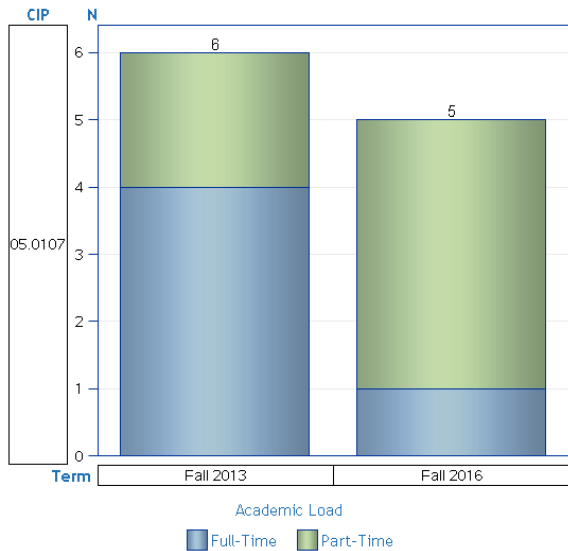
Headcount by Service Area



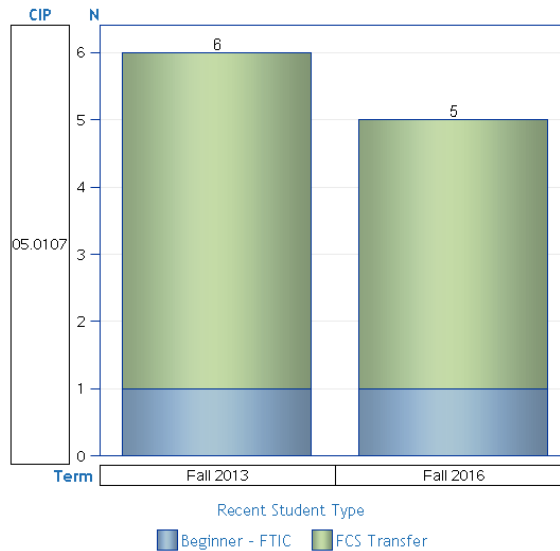
Gender			Female		Male		Total	
CIP	CIP Descr.	Term	N	%	N	%	N	%
05.0107	Latin American Studies	Fall 2013	5	83.33%	1	16.67%	6	100.00%
		Fall 2016	3	60.00%	2	40.00%	5	100.00%

Service Area			UCF Service Region		FL Non-Srvc Region		International		Total	
CIP	CIP Descr.	Term	N	%	N	%	N	%	N	%
05.0107	Latin American Studies	Fall 2013	3	50.00%	2	33.33%	1	16.67%	6	100.00%
		Fall 2016	4	80.00%	1	20.00%	.	.	5	100.00%

Headcount by Academic Load



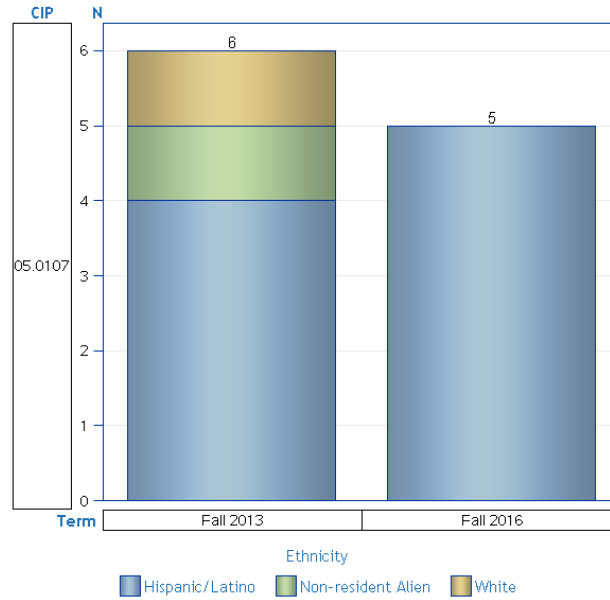
Headcount by Recent Student Type



Academic Load			Full-Time		Part-Time		Total	
CIP	CIP Descr.	Term	N	%	N	%	N	%
05.0107	Latin American Studies	Fall 2013	4	66.67%	2	33.33%	6	100.00%
		Fall 2016	1	20.00%	4	80.00%	5	100.00%

Recent Student Type			Beginner - FTIC		FCS Transfer		Total	
CIP	CIP Descr.	Term	N	%	N	%	N	%
05.0107	Latin American Studies	Fall 2013	1	16.67%	5	83.33%	6	100.00%
		Fall 2016	1	20.00%	4	80.00%	5	100.00%

Headcount by Ethnicity



Ethnicity			Hispanic/Latino		Non-resident Alien		White		Total	
CIP	CIP Descr.	Term	N	%	N	%	N	%	N	%
05.0107	Latin American Studies	Fall 2013	4	66.67%	1	16.67%	1	16.67%	6	100.00%
		Fall 2016	5	100.00%	5	100.00%

College of Arts & Humanities

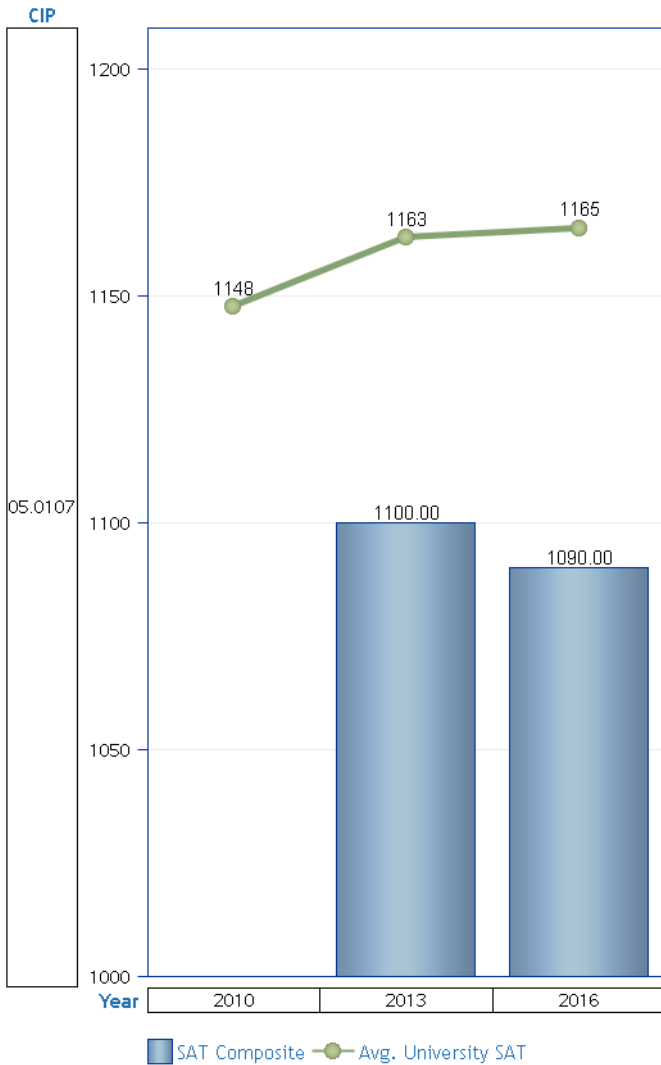
Latin American Studies

Undergraduate

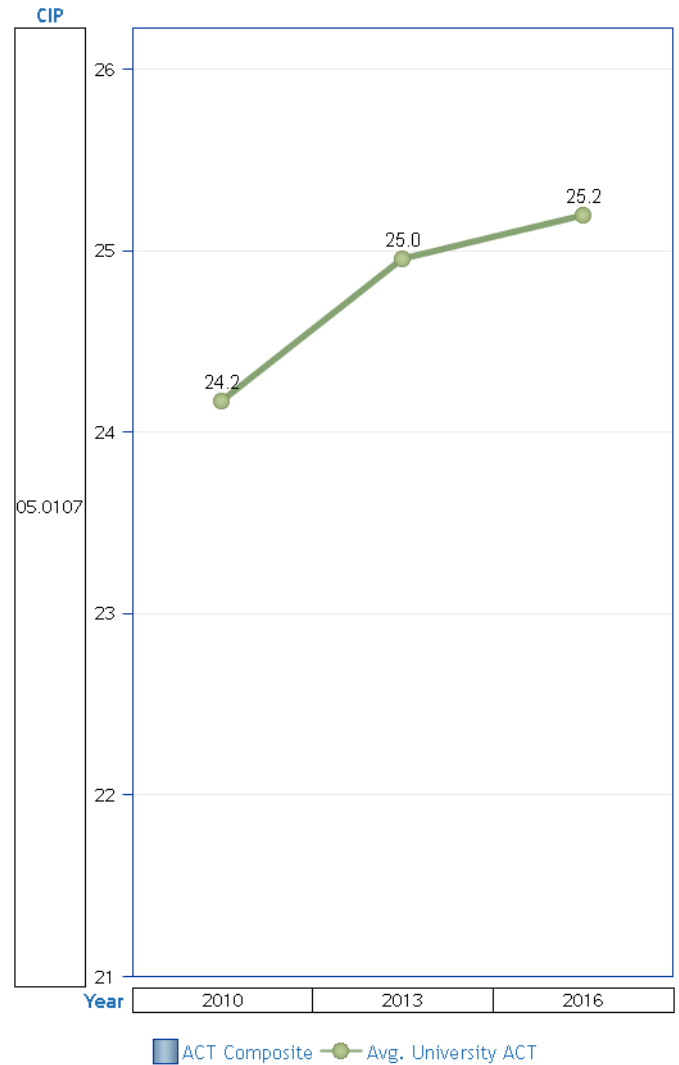
CIP	Plan
05.0107	Latin American Studies BA

Bars represent averages for Program. Line represents averages for UCF Undergraduate Students.
Includes current Juniors and Seniors who entered UCF as a FTIC and have valid scores on file.
Program data excludes Pending Majors.

Avg. SAT Composite Scores



Avg. ACT Composite Scores



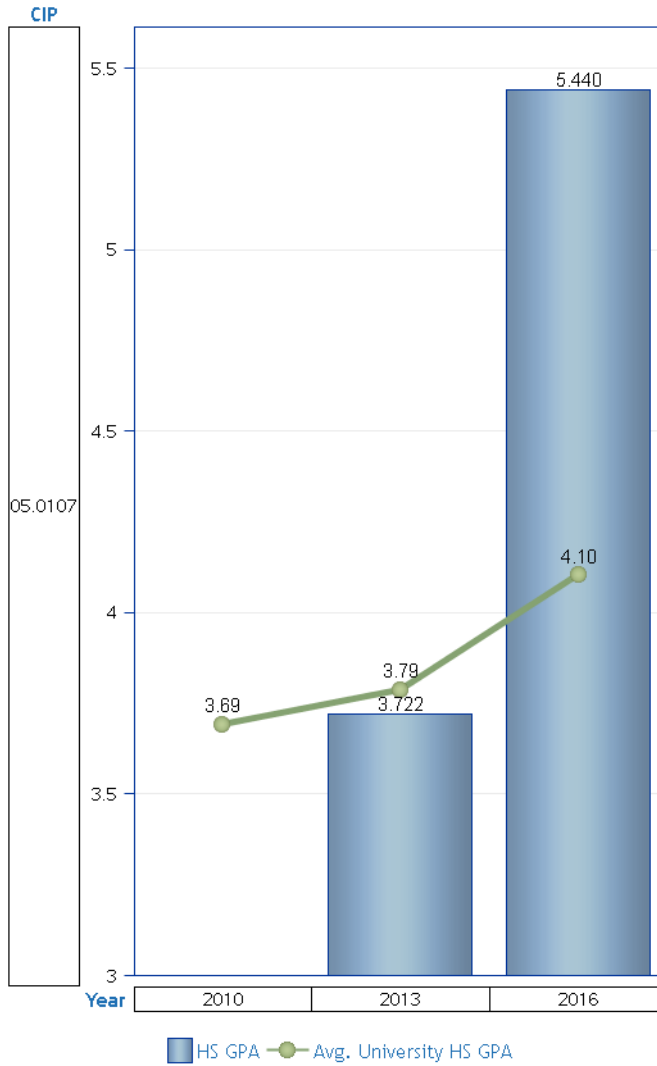
				N	SAT Composite	Avg. University SAT
CIP	CIP Descr.	Semester	Year			
05.0107	Latin American Studies	Fall	2010	0	.	1148
			2013	1	1100.00	1163

				N	ACT Composite	Avg. University ACT
CIP	CIP Descr.	Semester	Year			
05.0107	Latin American Studies	Fall	2010	0	.	24.2
			2013	0	.	25.0

CIP	CIP Descr.	Semester	Year	N	SAT Composite	Avg. University SAT
05.0107	Latin American Studies	Fall	2016	1	1090.00	1165

CIP	CIP Descr.	Semester	Year	N	ACT Composite	Avg. University ACT
05.0107	Latin American Studies	Fall	2016	0	.	25.2

Avg. HS GPA



CIP	CIP Descr.	Semester	Year	N	HS GPA	Avg. University HS GPA
05.0107	Latin American Studies	Fall	2010	0	.	3.69
05.0107	Latin American Studies	Fall	2013	1	3.722	3.79
05.0107	Latin American Studies	Fall	2016	1	5.440	4.10