

## Office of Institutional Research



### Program Review

Institutional Research is asked to provide data for programs under review each reporting cycle. Common definitions are applied to all programs under review, resulting in consistent reporting.

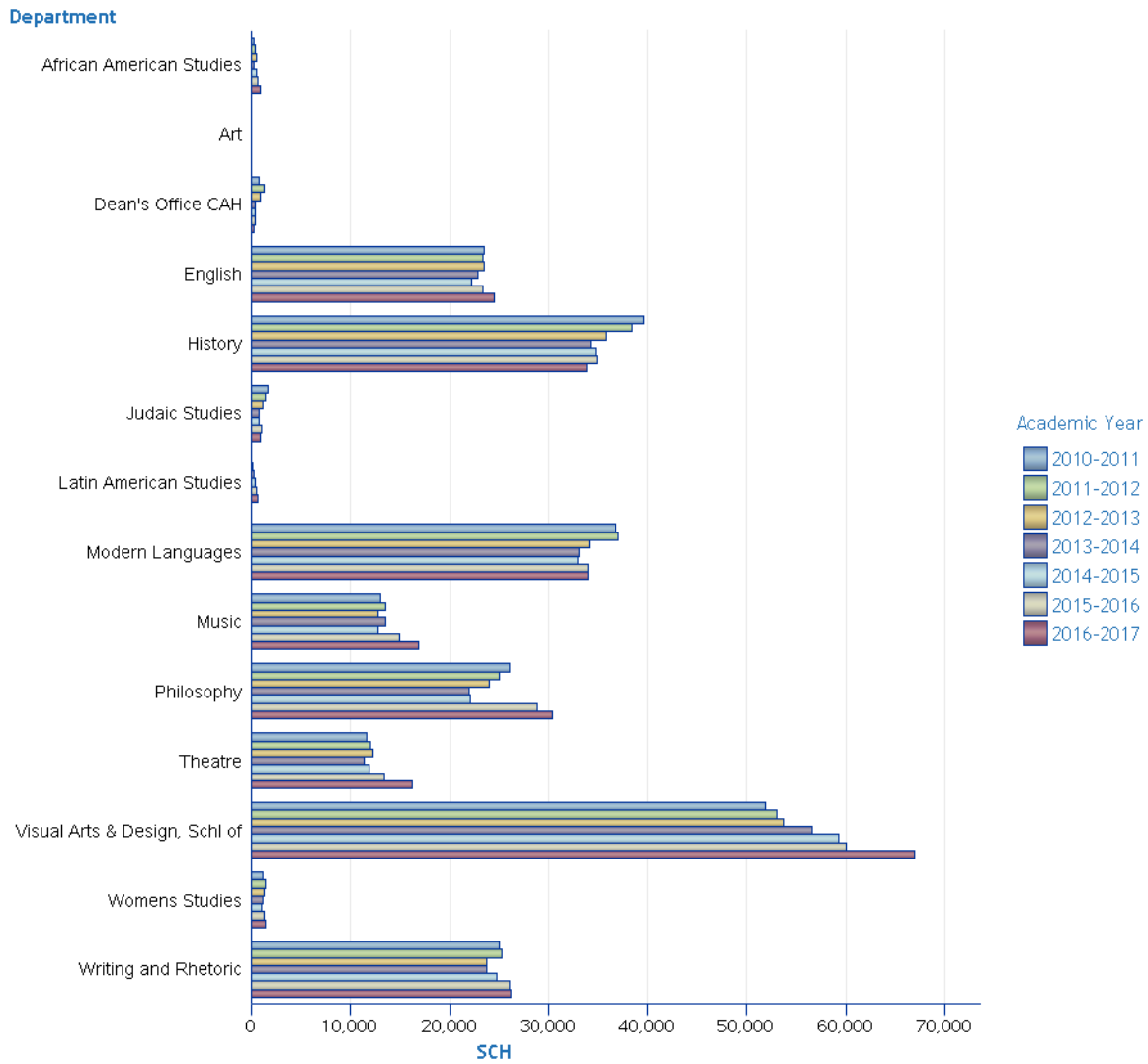
In addition to graphical presentation, many measures include numeric counts of data. The user is cautioned to consider the number of records used in an average. In some cases, a low 'N' may generate results which may be misinterpreted.

#### Sources:

- Contracts & Grants – Dollars & Awards – Office of Research & Commercialization
- Count of Applications – Admissions File
- Degrees Granted and Time-to-Degree – Degrees Awarded
- Headcount and Demographic details – Student Instruction File
- Instructional Faculty FTE – Fall Staff File
- Projected Headcount and Degrees – UCF Enrollment and Degree Program Level Projections
- Scores – SAT, ACT, HS GPA, GRE, and GMAT – Student Instruction File and Scores Table
- Student Credit Hours (SCH), Class Size, and Count of Sections – Student Data Course File

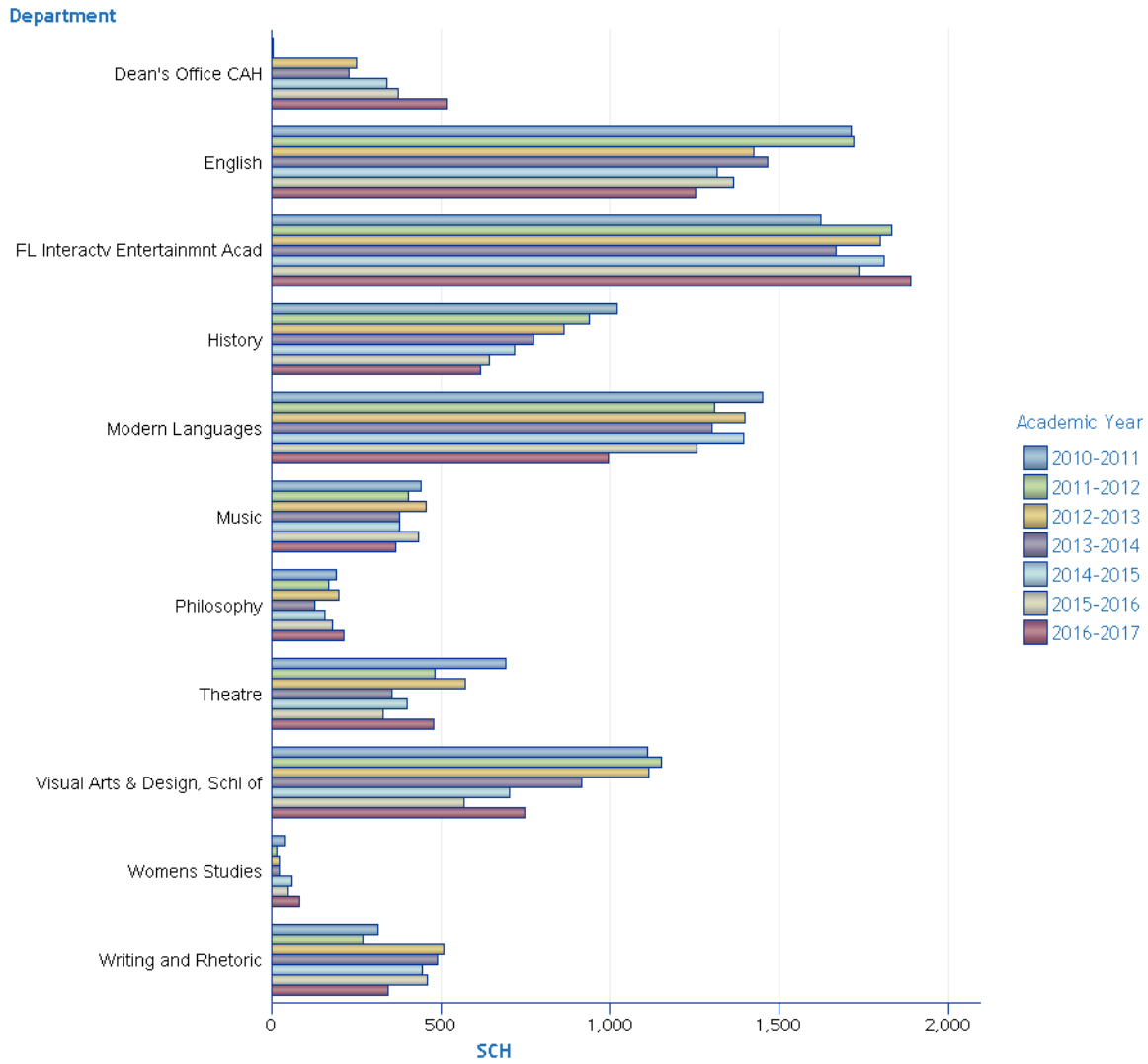
## College of Arts & Humanities

### Total Student Credit Hours by Department - Undergraduate



			SCH						
Academic Year			2010-2011	2011-2012	2012-2013	2013-2014	2014-2015	2015-2016	2016-2017
Career	College	Department							
Undergraduate	College of Arts & Humanities	African American Studies	306	447	459	306	495	657	900
		Art	.	9	.	3	.	.	.
		Dean's Office CAH	811	1,250	930	375	442	437	312
		English	23,494	23,406	23,539	22,856	22,176	23,339	24,513
		History	39,662	38,405	35,787	34,205	34,693	34,827	33,806
		Judaic Studies	1,628	1,407	1,189	808	827	996	870
		Latin American Studies	.	.	162	224	344	502	612
		Modern Languages	36,807	37,036	34,068	33,055	32,913	34,028	33,946
		Music	13,012	13,489	12,823	13,573	12,800	14,945	16,808
		Philosophy	26,100	25,079	24,023	21,966	22,156	28,885	30,350
		Theatre	11,613	12,013	12,281	11,427	11,908	13,434	16,273
		Visual Arts & Design, Schl of	51,883	53,032	53,744	56,639	59,213	60,013	66,932
		Womens Studies	1,157	1,386	1,325	1,170	1,011	1,248	1,389
		Writing and Rhetoric	25,011	25,236	23,771	23,727	24,729	26,079	26,217
<b>Total</b>			<b>231,484</b>	<b>232,195</b>	<b>224,101</b>	<b>220,334</b>	<b>223,707</b>	<b>239,390</b>	<b>252,928</b>

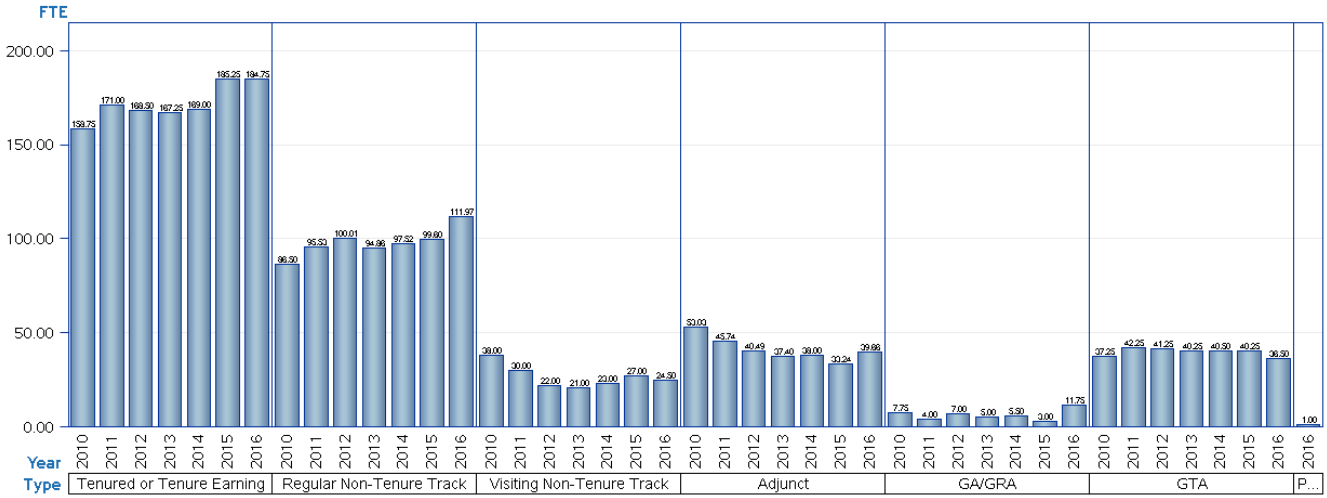
Total Student Credit Hours by Department - Graduate



			SCH						
Academic Year			2010-2011	2011-2012	2012-2013	2013-2014	2014-2015	2015-2016	2016-2017
Career	College	Department							
Graduate	College of Arts & Humanities	Dean's Office CAH	3	4	249	229	339	373	515
		English	1,711	1,721	1,423	1,465	1,315	1,363	1,252
		FL Interactv Entertainmnt Acad	1,623	1,830	1,797	1,668	1,809	1,734	1,887
		History	1,021	937	862	772	716	643	617
		Modern Languages	1,450	1,308	1,397	1,302	1,395	1,255	993
		Music	440	403	457	377	377	433	367
		Philosophy	192	168	198	126	156	180	213
		Theatre	690	483	571	355	399	329	479
		Visual Arts & Design, Schl of	1,112	1,150	1,113	915	703	567	747
		Womens Studies	36	15	24	24	60	48	81
		Writing and Rhetoric	315	271	510	489	444	459	345
<b>Total</b>			<b>8,593</b>	<b>8,290</b>	<b>8,601</b>	<b>7,722</b>	<b>7,713</b>	<b>7,384</b>	<b>7,496</b>

## College of Arts & Humanities

### Faculty FTE

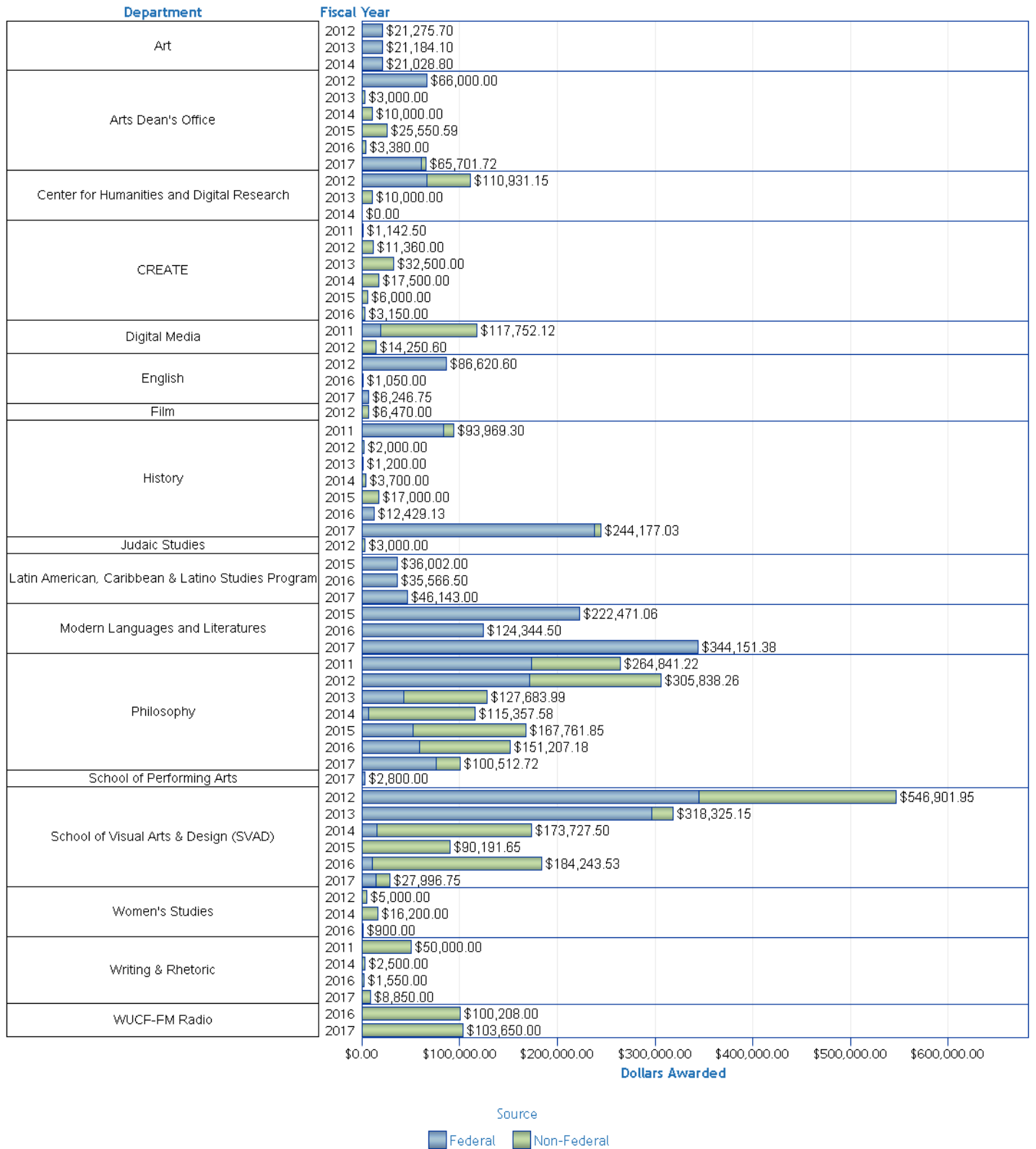


Year		2010		2011		2012		2013		2014		2015		2016	
College	Type	FTE	N	FTE	N	FTE	N	FTE	N	FTE	N	FTE	N	FTE	N
College of Arts & Humanities	Tenured or Tenure Earning	158.75	160	171.00	172	168.50	170	167.25	169	169.00	169	185.25	186	184.75	186
	Regular Non-Tenure Track	86.50	98	95.53	103	100.01	107	94.86	98	97.52	103	99.60	105	111.97	118
	Visiting Non-Tenure Track	38.00	38	30.00	30	22.00	22	21.00	21	23.00	23	27.00	27	24.50	25
	Adjunct	53.03	111	45.74	109	40.49	89	37.40	86	38.00	92	33.24	84	39.66	95
	GA/GRA	7.75	18	4.00	10	7.00	16	5.00	10	5.50	12	3.00	6	11.75	27
	GTA	37.25	75	42.25	89	41.25	83	40.25	81	40.50	82	40.25	81	36.50	75
	Post Doctoral Associate	.	.	.	.	.	.	.	.	.	.	.	.	.	1.00
<b>Total</b>		<b>381.28</b>	<b>500</b>	<b>388.52</b>	<b>513</b>	<b>379.25</b>	<b>487</b>	<b>365.76</b>	<b>465</b>	<b>373.52</b>	<b>481</b>	<b>388.34</b>	<b>489</b>	<b>410.13</b>	<b>527</b>

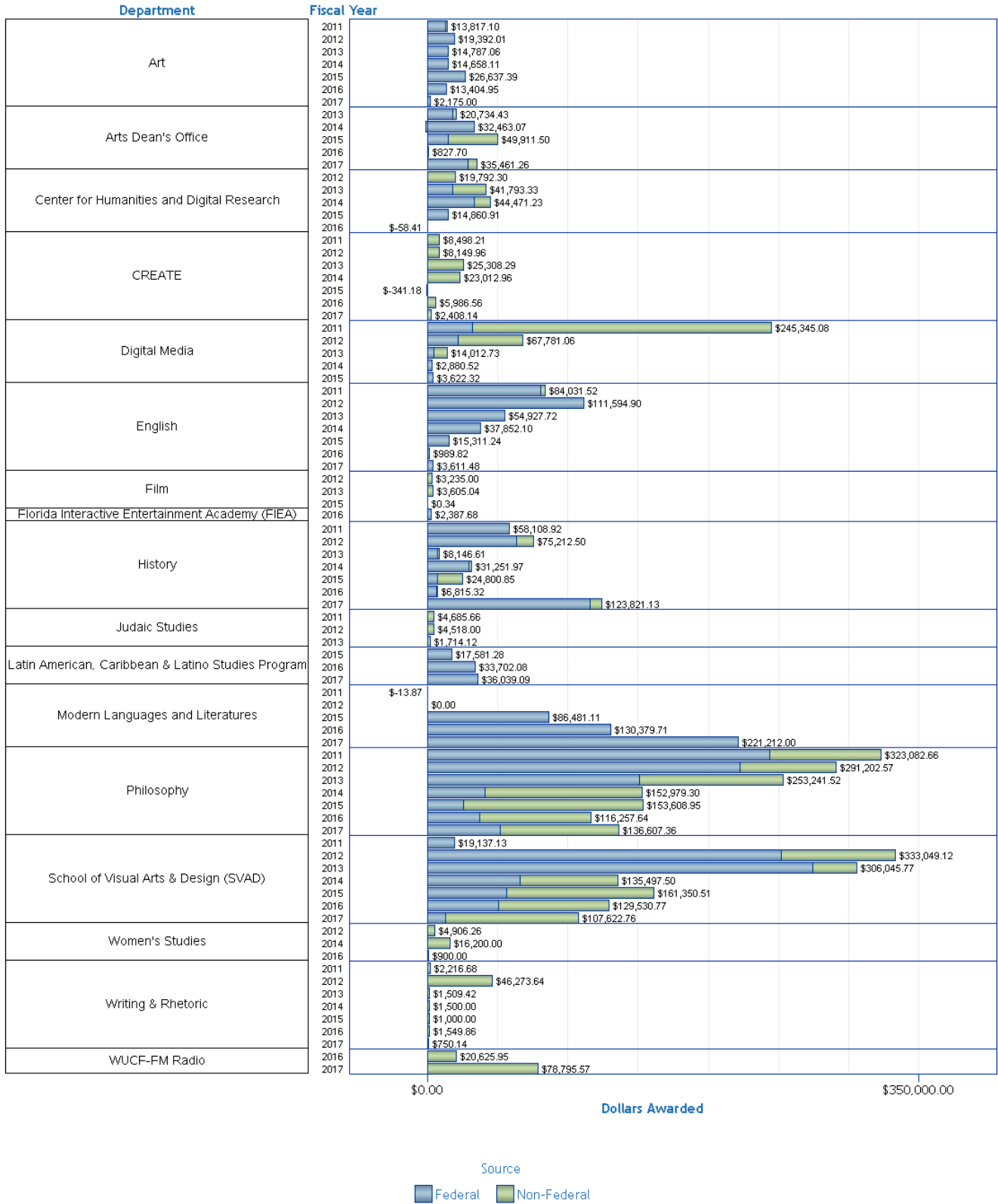
Includes Faculty FTE based on Primary Department.  
Faculty FTE includes Dual Comp FTE (when applicable).

## College of Arts & Humanities

### Contracts and Grants - Awards



Contracts and Grants - Expenditures



## Awards

College		Dollars Awarded		Total
		Federal	Non-Federal	
Source	Fiscal Year			
Department				
Art	2012	\$21,275.70	.	\$21,275.70
	2013	\$21,184.10	.	\$21,184.10
	2014	\$21,028.80	.	\$21,028.80
Arts Dean's Office	2012	\$66,000.00	.	\$66,000.00
	2013	.	\$3,000.00	\$3,000.00
	2014	.	\$10,000.00	\$10,000.00
	2015	.	\$25,550.59	\$25,550.59
	2016	.	\$3,380.00	\$3,380.00
CREATE	2017	\$60,801.72	\$4,900.00	\$65,701.72
	2011	.	\$1,142.50	\$1,142.50
	2012	.	\$11,360.00	\$11,360.00
	2013	.	\$32,500.00	\$32,500.00
	2014	.	\$17,500.00	\$17,500.00
	2015	.	\$6,000.00	\$6,000.00
Center for Humanities and Digital Research	2016	.	\$3,150.00	\$3,150.00
	2012	\$66,000.00	\$44,931.15	\$110,931.15
	2013	.	\$10,000.00	\$10,000.00
Digital Media	2014	.	\$0.00	\$0.00
	2011	\$19,332.20	\$98,419.92	\$117,752.12
English	2012	.	\$14,250.60	\$14,250.60
	2012	\$86,620.60	.	\$86,620.60
Film	2016	\$1,050.00	.	\$1,050.00
	2017	\$6,246.75	.	\$6,246.75
History	2012	.	\$6,470.00	\$6,470.00
	2011	\$83,470.80	\$10,498.50	\$93,969.30
	2012	.	\$2,000.00	\$2,000.00
	2013	.	\$1,200.00	\$1,200.00
	2014	.	\$3,700.00	\$3,700.00
	2015	.	\$17,000.00	\$17,000.00
	2016	\$12,429.13	.	\$12,429.13
Judaic Studies	2017	\$237,777.03	\$6,400.00	\$244,177.03
	2012	.	\$3,000.00	\$3,000.00
Latin American, Caribbean & Latino Studies Program	2015	\$36,002.00	.	\$36,002.00
	2016	\$35,566.50	.	\$35,566.50
	2017	\$46,143.00	.	\$46,143.00
Modern Languages and Literatures	2015	\$222,471.06	.	\$222,471.06
	2016	\$124,344.50	.	\$124,344.50
	2017	\$344,151.38	.	\$344,151.38
Philosophy	2011	\$173,419.45	\$91,421.78	\$264,841.22
	2012	\$171,093.08	\$134,745.18	\$305,838.26
	2013	\$42,392.25	\$85,291.74	\$127,683.99
	2014	\$6,522.64	\$108,834.94	\$115,357.58
	2015	\$52,368.00	\$115,393.85	\$167,761.85
	2016	\$58,500.00	\$92,707.18	\$151,207.18
	2017	\$75,500.00	\$25,012.72	\$100,512.72
School of Performing Arts	2017	.	.	
School of Visual Arts & Design (SVAD)	2012	\$2,800.00	.	\$2,800.00
	2012	\$345,403.95	\$201,498.00	\$546,901.95
	2013	\$296,307.15	\$22,018.00	\$318,325.15
	2014	\$14,779.80	\$158,947.70	\$173,727.50
	2015	.	\$90,191.65	\$90,191.65
	2016	\$10,875.00	\$173,368.53	\$184,243.53
WUCF-FM Radio	2017	\$14,646.75	\$13,350.00	\$27,996.75
	2016	.	\$100,208.00	\$100,208.00
Women's Studies	2017	.	\$103,650.00	\$103,650.00
	2012	.	\$5,000.00	\$5,000.00
	2014	.	\$16,200.00	\$16,200.00

## Expenditures

Source		Dollars Awarded		
		Federal	Non-Federal	Total
Department	Fiscal Year			
Art	2011	\$12,758.09	\$1,059.01	\$13,817.10
	2012	\$19,392.01	.	\$19,392.01
	2013	\$14,787.06	.	\$14,787.06
	2014	\$14,658.11	.	\$14,658.11
	2015	\$26,637.39	.	\$26,637.39
	2016	\$13,404.95	.	\$13,404.95
	2017	\$2,175.00	.	\$2,175.00
Arts Dean's Office	2013	\$17,734.43	\$3,000.00	\$20,734.43
	2014	\$33,463.07	\$-1,000.00	\$32,463.07
	2015	\$14,860.91	\$35,050.59	\$49,911.50
	2016	\$-58.41	\$886.12	\$827.70
CREATE	2017	\$28,501.01	\$6,960.24	\$35,461.26
	2011	.	\$8,498.21	\$8,498.21
	2012	.	\$8,149.96	\$8,149.96
	2013	.	\$25,308.29	\$25,308.29
	2014	.	\$23,012.96	\$23,012.96
	2015	.	\$-341.18	\$-341.18
	2016	.	\$5,986.56	\$5,986.56
Center for Humanities and Digital Research	2017	.	\$2,408.14	\$2,408.14
	2012	.	\$19,792.30	\$19,792.30
	2013	\$17,734.43	\$24,058.90	\$41,793.33
	2014	\$33,463.07	\$11,008.16	\$44,471.23
Digital Media	2015	\$14,860.91	.	\$14,860.91
	2016	\$-58.41	.	\$-58.41
	2011	\$31,732.45	\$213,612.62	\$245,345.08
	2012	\$21,957.15	\$45,823.91	\$67,781.06
	2013	\$4,382.69	\$9,630.04	\$14,012.73
	2014	\$2,880.52	.	\$2,880.52
	2015	\$3,622.32	\$0.00	\$3,622.32
English	2011	\$80,853.67	\$3,177.85	\$84,031.52
	2012	\$111,594.90	.	\$111,594.90
	2013	\$54,927.72	.	\$54,927.72
	2014	\$37,852.10	.	\$37,852.10
	2015	\$15,311.24	.	\$15,311.24
	2016	\$989.82	.	\$989.82
	2017	\$3,611.48	.	\$3,611.48
Film	2012	.	\$3,235.00	\$3,235.00
	2013	.	\$3,605.04	\$3,605.04
	2015	.	\$0.34	\$0.34
Florida Interactive Entertainment Academy (FIEA)	2016	.	.	
History	2011	\$2,387.68	.	\$2,387.68
	2011	\$58,108.92	.	\$58,108.92
	2012	\$63,502.00	\$11,710.50	\$75,212.50
	2013	\$7,357.61	\$789.00	\$8,146.61
	2014	\$29,600.95	\$1,651.02	\$31,251.97
	2015	\$7,244.64	\$17,556.21	\$24,800.85
	2016	\$6,532.24	\$283.08	\$6,815.32
Judaic Studies	2017	\$115,740.86	\$8,080.27	\$123,821.13
	2011	.	\$4,685.66	\$4,685.66
	2012	.	\$4,518.00	\$4,518.00
Latin American, Caribbean & Latino Studies Program	2013	.	\$1,714.12	\$1,714.12
	2015	\$17,581.28	.	\$17,581.28
	2016	\$33,702.08	.	\$33,702.08
Modern Languages and Literatures	2017	\$36,039.09	.	\$36,039.09
	2011	.	\$-13.87	\$-13.87
WUCF-FM Radio	2012	\$0.00	.	\$0.00
	2015	\$86,481.11	.	\$86,481.11
	2016	\$130,379.71	.	\$130,379.71

## Awards

College		Dollars Awarded		Total
Source	Fiscal Year	Federal	Non-Federal	
Women's Studies	2016	\$900.00	.	\$900.00
	2011	.	\$50,000.00	\$50,000.00
Writing & Rhetoric	2014	.	\$2,500.00	\$2,500.00
	2016	.	\$1,550.00	\$1,550.00
	2017	.	\$8,850.00	\$8,850.00

## Expenditures

Source		Dollars Awarded		
Department	Fiscal Year	Federal	Non-Federal	Total
Modern Languages and Literatures	2017	\$221,212.00	.	\$221,212.00
	2011	\$244,103.72	\$78,978.94	\$323,082.66
	2012	\$222,712.47	\$68,490.10	\$291,202.57
	2013	\$151,073.66	\$102,167.85	\$253,241.52
Philosophy	2014	\$40,983.07	\$111,996.23	\$152,979.30
	2015	\$25,376.27	\$128,232.68	\$153,608.95
	2016	\$37,405.34	\$78,852.29	\$116,257.64
	2017	\$51,915.16	\$84,692.20	\$136,607.36
	2011	\$19,137.13	.	\$19,137.13
	2012	\$251,880.69	\$81,168.43	\$333,049.12
	2013	\$274,742.73	\$31,303.04	\$306,045.77
School of Visual Arts & Design (SVAD)	2014	\$65,842.96	\$69,654.54	\$135,497.50
	2015	\$56,560.64	\$104,789.87	\$161,350.51
	2016	\$50,355.18	\$79,175.59	\$129,530.77
	2017	\$12,595.39	\$95,027.37	\$107,622.76
WUCF-FM Radio	2016	.	\$20,625.95	\$20,625.95
	2017	.	\$78,795.57	\$78,795.57
	2012	.	\$4,906.26	\$4,906.26
Women's Studies	2014	.	\$16,200.00	\$16,200.00
	2016	\$900.00	.	\$900.00
	2011	.	\$2,216.68	\$2,216.68
	2012	.	\$46,273.64	\$46,273.64
	2013	.	\$1,509.42	\$1,509.42
Writing & Rhetoric	2014	.	\$1,500.00	\$1,500.00
	2015	.	\$1,000.00	\$1,000.00
	2016	.	\$1,549.86	\$1,549.86
	2017	.	\$750.14	\$750.14

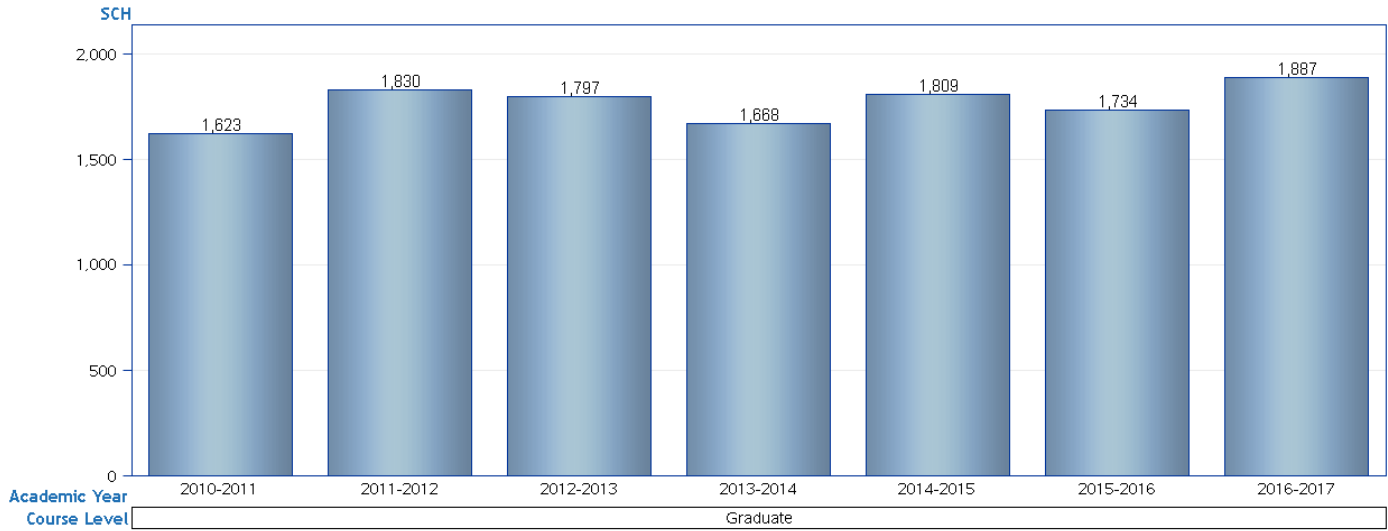
Dollar amounts are shared between PI's and Co-PI's. Awards are credited in full to PI's.

This can sometimes result in data that displays dollars but no corresponding counts in new or incremental awards.



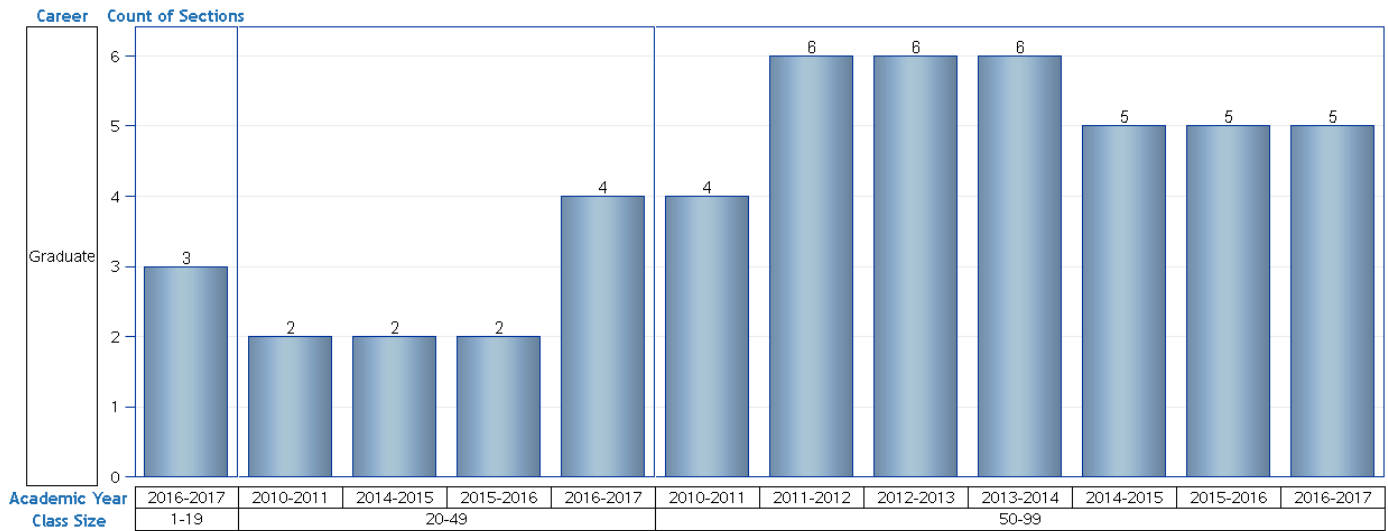
**College of Arts & Humanities**  
**FL Interactv Entertainmnt Acad**

**Total Student Credit Hours by Course Level**



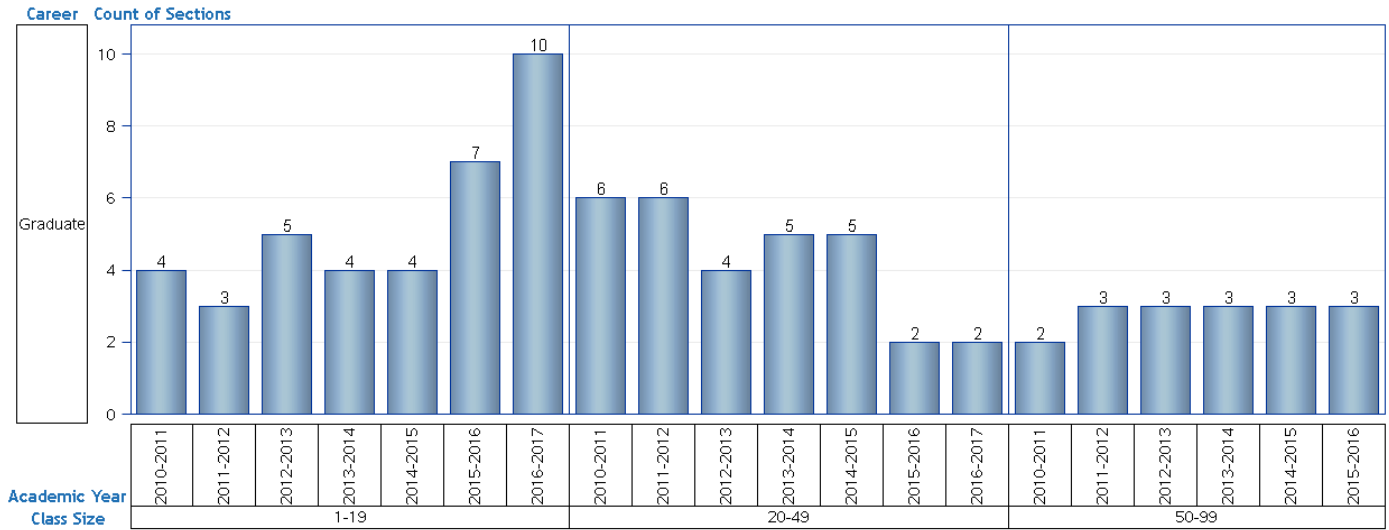
Academic Year		SCH						
		2010-2011	2011-2012	2012-2013	2013-2014	2014-2015	2015-2016	2016-2017
Department	Course Level							
FL Interactv Entertainmnt Acad	Graduate	1,623	1,830	1,797	1,668	1,809	1,734	1,887
<b>Total</b>		<b>1,623</b>	<b>1,830</b>	<b>1,797</b>	<b>1,668</b>	<b>1,809</b>	<b>1,734</b>	<b>1,887</b>

**Count of Sections - Lecture**



Academic Year				Count of Sections						
				2010-2011	2011-2012	2012-2013	2013-2014	2014-2015	2015-2016	2016-2017
Department	Career	Course Component	Class Size							
FL Interactv Entertainmnt Acad	Graduate	Lecture	1-19	.	.	.	.	.	.	3
			20-49	2	.	.	.	2	2	4
			50-99	4	6	6	6	5	5	5

Count of Sections - Lab



Academic Year				Count of Sections						
Department	Career	Course Component	Class Size	2010-2011	2011-2012	2012-2013	2013-2014	2014-2015	2015-2016	2016-2017
FL Interactv Entertainmnt Acad	Graduate	Laboratory	1-19	4	3	5	4	4	7	10
			20-49	6	6	4	5	5	2	2
			50-99	2	3	3	3	3	3	.

**College of Arts & Humanities**  
**FL Interactv Entertainmnt Acad**

**Total Student Credit Hours by Course Location**

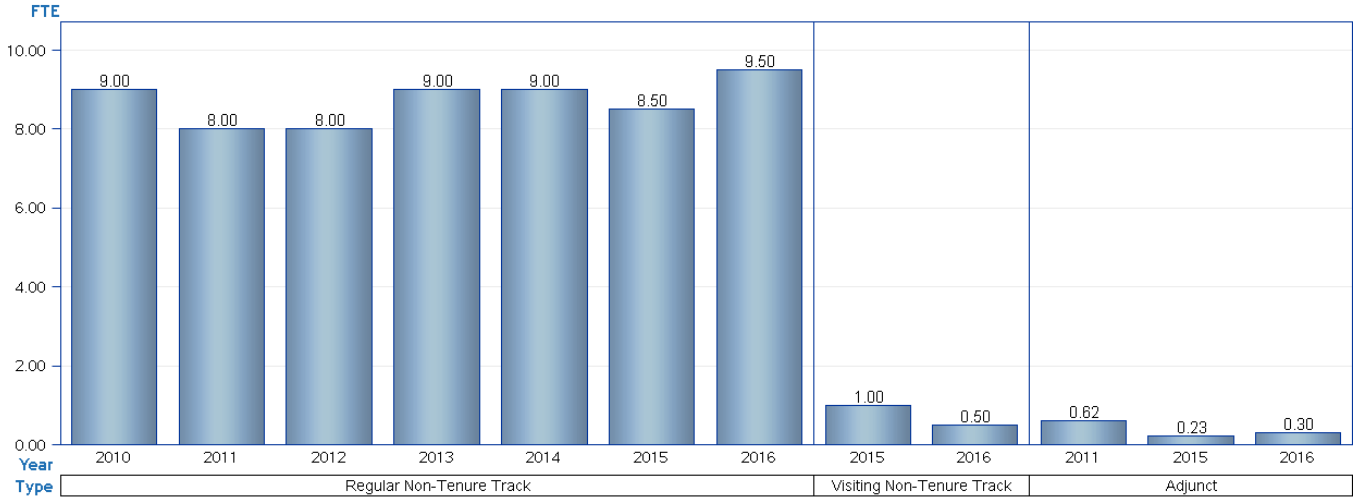
Academic Year		Student Credit Hours							%						
Department	Course Location	2010-2011	2011-2012	2012-2013	2013-2014	2014-2015	2015-2016	2016-2017	2010-2011	2011-2012	2012-2013	2013-2014	2014-2015	2015-2016	2016-2017
FL Interactv Entertainmnt Acad	Main Off Campus	147.0	165.0	192.0	171.0	-	-	-	9.06%	9.02%	10.68%	10.25%	-	-	-
	UCF Orlando Expo Center	1,476.0	1,665.0	1,605.0	1,497.0	1,809.0	1,734.0	1,887.0	90.94%	90.98%	89.32%	89.75%	100.00%	100.00%	100.00%
<b>Total</b>		<b>1,623.0</b>	<b>1,830.0</b>	<b>1,797.0</b>	<b>1,668.0</b>	<b>1,809.0</b>	<b>1,734.0</b>	<b>1,887.0</b>	<b>100.00%</b>	<b>100.00%</b>	<b>100.00%</b>	<b>100.00%</b>	<b>100.00%</b>	<b>100.00%</b>	<b>100.00%</b>

**Total Student Credit Hours by Course Instruction Mode**

Academic Year		Student Credit Hours							%						
Department	Course Instruction Mode	2010-2011	2011-2012	2012-2013	2013-2014	2014-2015	2015-2016	2016-2017	2010-2011	2011-2012	2012-2013	2013-2014	2014-2015	2015-2016	2016-2017
FL Interactv Entertainmnt Acad	Face to Face Instruction (P)	1,623.0	1,830.0	1,797.0	1,668.0	1,809.0	1,734.0	1,887.0	100.00%	100.00%	100.00%	100.00%	100.00%	100.00%	100.00%
<b>Total</b>		<b>1,623.0</b>	<b>1,830.0</b>	<b>1,797.0</b>	<b>1,668.0</b>	<b>1,809.0</b>	<b>1,734.0</b>	<b>1,887.0</b>	<b>100.00%</b>	<b>100.00%</b>	<b>100.00%</b>	<b>100.00%</b>	<b>100.00%</b>	<b>100.00%</b>	<b>100.00%</b>

Office of Institutional Research. Source: Student Credit Hours Fact. [Printed on: Friday, July 28, 2017 2:28:45 PM EDT]

**College of Arts & Humanities**  
**FL Interactv Entertainmnt Acad**  
**Faculty FTE**



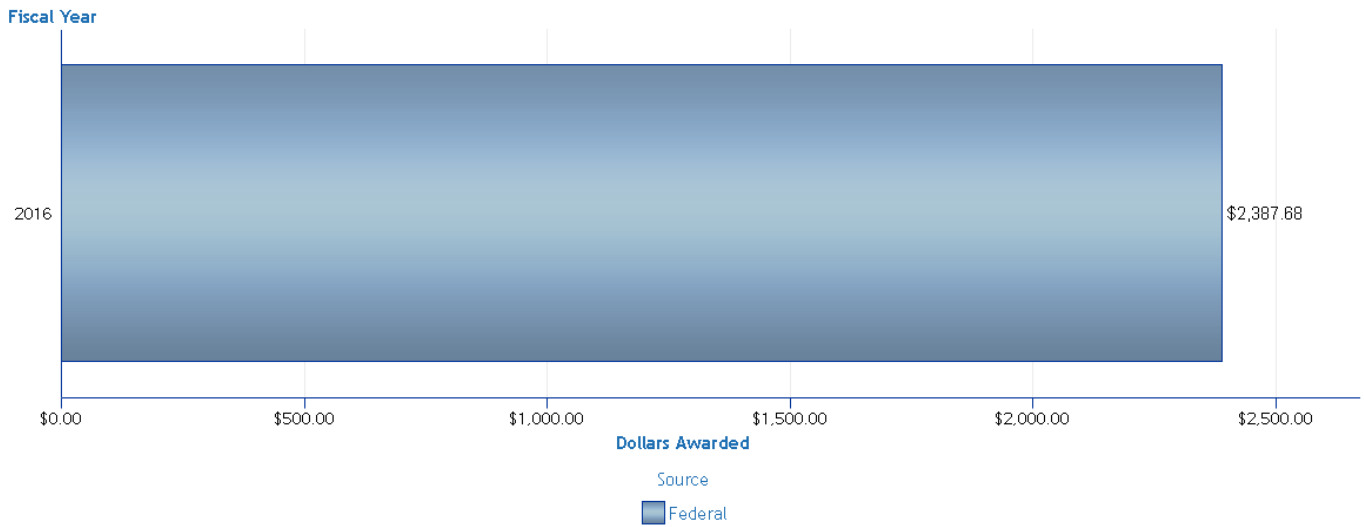
Year		2010		2011		2012		2013		2014		2015		2016	
Department	Type	FTE	N	FTE	N	FTE	N	FTE	N	FTE	N	FTE	N	FTE	N
FL Interactv Entertainmnt Acad	Regular Non-Tenure Track	9.00	9	8.00	8	8.00	8	9.00	9	9.00	9	8.50	9	9.50	10
	Visiting Non-Tenure Track	.	.	.	.	.	.	.	.	.	.	1.00	1	0.50	1
	Adjunct	.	.	0.62	1	.	.	.	.	.	.	0.23	1	0.30	1
<b>Total</b>		<b>9.00</b>	<b>9</b>	<b>8.62</b>	<b>9</b>	<b>8.00</b>	<b>8</b>	<b>9.00</b>	<b>9</b>	<b>9.00</b>	<b>9</b>	<b>9.73</b>	<b>11</b>	<b>10.30</b>	<b>12</b>

Includes Faculty FTE based on Primary Department.  
Faculty FTE includes Dual Comp FTE (when applicable).

**College of Arts & Humanities**  
**Florida Interactive Entertainment Academy (FIEA)**  
**Contracts and Grants - Awards**

No values were returned for this graph.

**Contracts and Grants - Expenditures**



**Awards**

No values were returned for this table.

**Expenditures**

Source	Federal	Total
	Dollars Awarded	Dollars Awarded
Fiscal Year		
2016	\$2,387.68	\$2,387.68

**Counts of New and Continuing Awards**

Source	Federal	
	New	Incremental
Fiscal Year		
2016	.	.

Total Amount = funding received from external sources in the given fiscal year for the department.  
 (This amount is using credit splits when awards are shared among departments)

Incremental counts reflect awards that continue past the initial year.

Dollar amounts are shared between PI's and Co-PI's. Awards are credited in full to PI's  
 This can sometimes result in data that displays dollars but no corresponding counts in new or incremental awards.

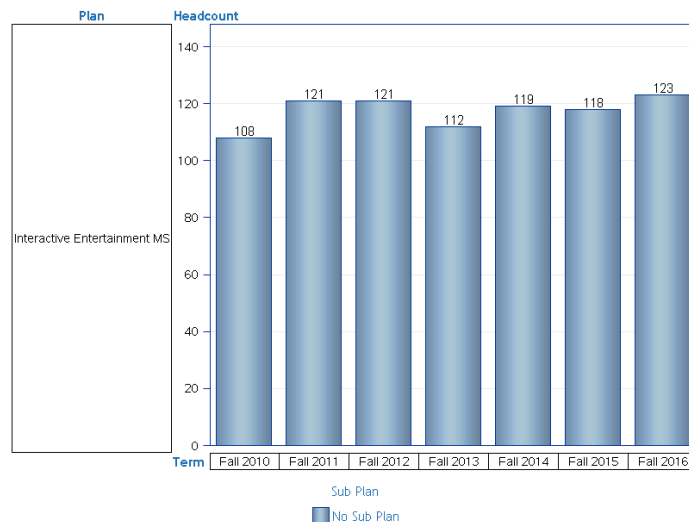
**College of Arts & Humanities**  
**FL Interactv Entertainmnt Acad**  
**Graduate - Master's**

CIP	Plan	Sub Plan
50.0102	Interactive Entertainment MS	No Sub Plan

**Headcount in Major by Plan**



**Headcount in Major by Plan and Sub Plan**



Term				Fall 2010	Fall 2011	Fall 2012	Fall 2013	Fall 2014	Fall 2015	Fall 2016
Headcount	Plan Type	Plan								
	MAJ	Interactive Entertainment MS		108	121	121	112	119	118	123
	<b>Total</b>			108	121	121	112	119	118	123

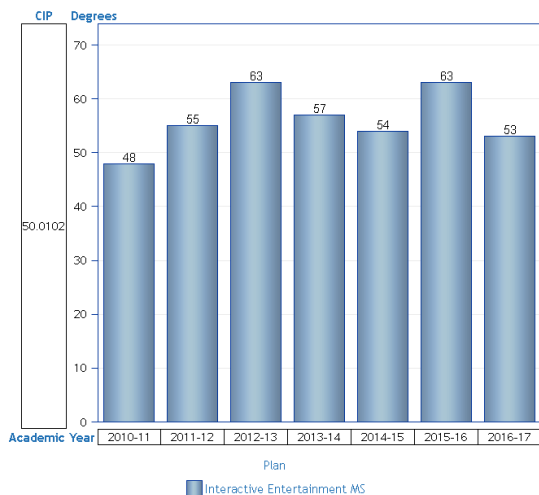
  

Term					Fall 2010	Fall 2011	Fall 2012	Fall 2013	Fall 2014	Fall 2015	Fall 2016
Headcount	Plan Type	Plan	Sub Plan								
	MAJ	Interactive Entertainment MS	No Sub Plan		108	121	121	112	119	118	123
	<b>Total</b>				108	121	121	112	119	118	123

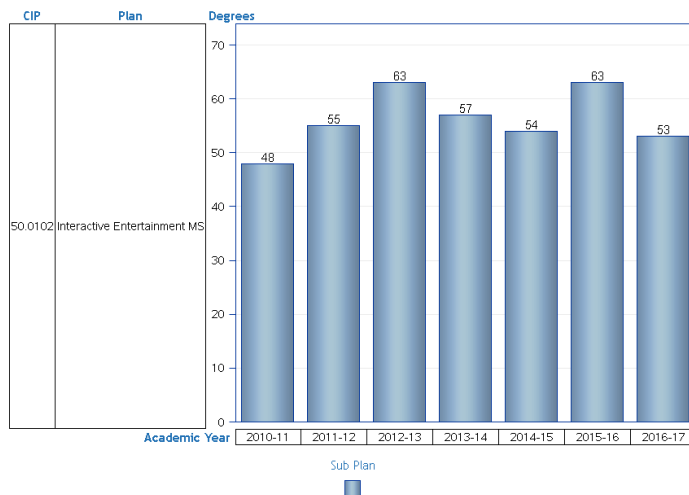
College of Arts & Humanities  
FL Interactv Entertainmnt Acad

Graduate

Degrees Granted by Plan



Degrees Granted by Plan and Sub Plan



Academic Year				2010-11	2011-12	2012-13	2013-14	2014-15	2015-16	2016-17
CIP	Degree Level	Plan								
50.0102	Master's	Interactive Entertainment MS		48	55	63	57	54	63	53
<b>Total</b>				<b>48</b>	<b>55</b>	<b>63</b>	<b>57</b>	<b>54</b>	<b>63</b>	<b>53</b>

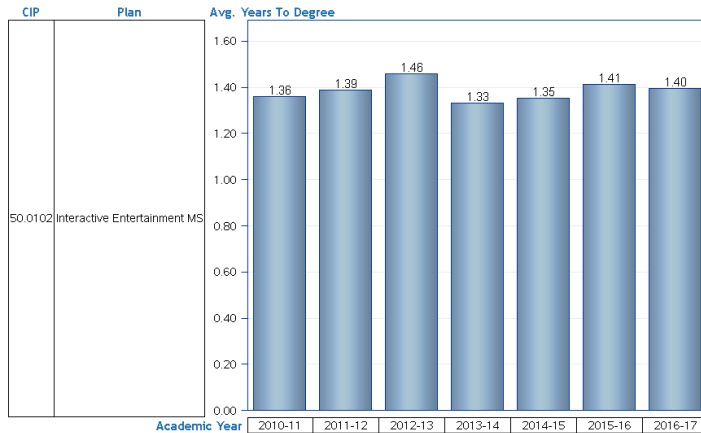
Academic Year					2010-11	2011-12	2012-13	2013-14	2014-15	2015-16	2016-17
CIP	Degree Level	Plan	Sub Plan								
50.0102	Master's	Interactive Entertainment MS			48	55	63	57	54	63	53
<b>Total</b>					<b>48</b>	<b>55</b>	<b>63</b>	<b>57</b>	<b>54</b>	<b>63</b>	<b>53</b>

Graduate Certificates Awarded

No values were returned for this table.

Time to Degree

Includes enrolled and non-enrolled semesters. A year is 3 semesters



CIP	Degree Level	Plan	Academic Year	N	Avg. Years To Degree
50.0102	Master's	Interactive Entertainment MS	2010-11	48	1.36
			2011-12	55	1.39
			2012-13	63	1.46
			2013-14	57	1.33
			2014-15	54	1.35
			2015-16	63	1.41
			2016-17	53	1.40

Range Acad Years to Degree				<=2		>2 and <=3		>3 and <=4		>4 and <=5		>5 and <=6		> 6		Total		
CIP	Degree Level	Plan	Academic Year	N	%	N	%	N	%	N	%	N	%	N	%	N	%	
50.0102	Master's	Interactive Entertainment MS	2010-11	47	97.92%	1	2.08%	-	-	-	-	-	-	-	-	48	100.00%	
			2011-12	54	98.18%	-	-	-	-	1	1.82%	-	-	-	-	-	55	100.00%
			2012-13	60	95.24%	-	-	2	3.17%	-	-	1	1.59%	-	-	-	63	100.00%
			2013-14	57	100.00%	-	-	-	-	-	-	-	-	-	-	-	57	100.00%
			2014-15	53	98.15%	1	1.85%	-	-	-	-	-	-	-	-	-	54	100.00%
			2015-16	62	98.41%	-	-	-	-	-	-	-	-	1	1.59%	-	63	100.00%
			2016-17	52	98.11%	-	-	-	-	1	1.89%	-	-	-	-	-	53	100.00%

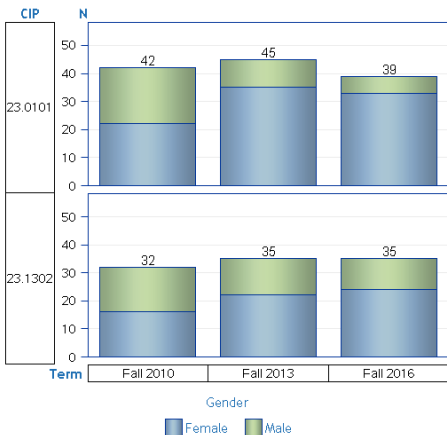
College of Arts & Humanities

English

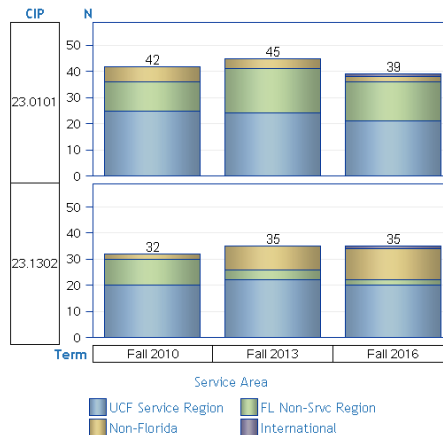
Graduate - Master's

CIP	Plan	Sub Plan
23.0101	English MA	Litry, Cultrl & Txtl Stdy Trk
23.0101	English MA	Technical Communications Track
23.1302	Creative Writing MFA	No Sub Plan

Headcount by Gender



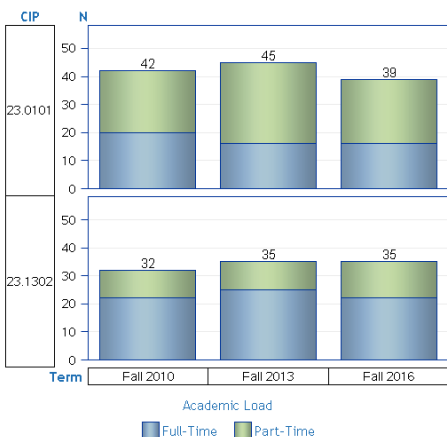
Headcount by Service Area



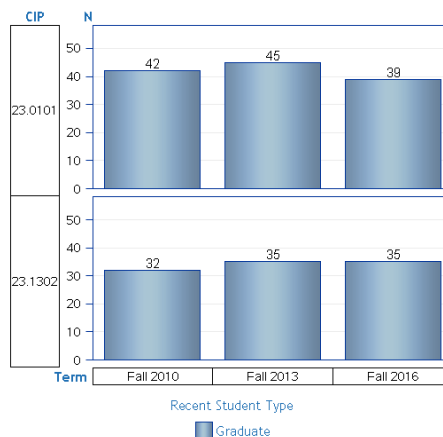
CIP	CIP Descr.	Term	Female		Male		Total	
			N	%	N	%	N	%
23.0101	English Language and Literature, General	Fall 2010	22	52.38%	20	47.62%	42	100.00%
		Fall 2013	35	77.78%	10	22.22%	45	100.00%
		Fall 2016	33	84.62%	6	15.38%	39	100.00%
23.1302	Creative Writing	Fall 2010	16	50.00%	16	50.00%	32	100.00%
		Fall 2013	22	62.86%	13	37.14%	35	100.00%
		Fall 2016	24	68.57%	11	31.43%	35	100.00%

CIP	CIP Descr.	Term	UCF Service Region		FL Non-Srvc Region		Non-Florida		International		Total	
			N	%	N	%	N	%	N	%	N	%
23.0101	English Language and Literature, General	Fall 2010	25	59.52%	11	26.19%	6	14.29%	0	0%	42	100.00%
		Fall 2013	24	53.33%	17	37.78%	4	8.89%	0	0%	45	100.00%
		Fall 2016	21	53.85%	15	38.46%	2	5.13%	1	2.56%	39	100.00%
23.1302	Creative Writing	Fall 2010	20	62.50%	10	31.25%	2	6.25%	0	0%	32	100.00%
		Fall 2013	22	62.86%	4	11.43%	9	25.71%	0	0%	35	100.00%
		Fall 2016	20	57.14%	2	5.71%	12	34.29%	1	2.86%	35	100.00%

Headcount by Academic Load



Headcount by Recent Student Type

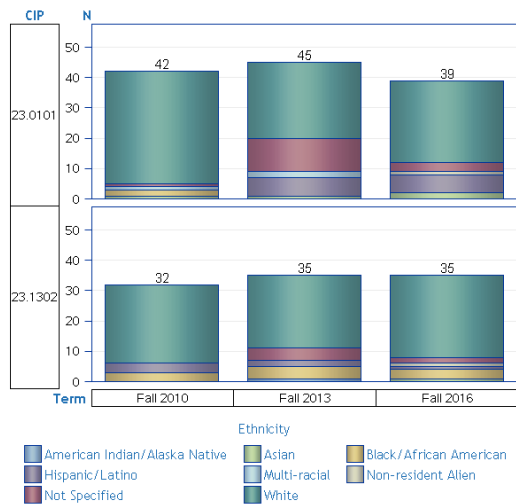


CIP	CIP Descr.	Term	Full-Time		Part-Time		Total	
			N	%	N	%	N	%
23.0101	English Language and Literature, General	Fall 2010	20	47.62%	22	52.38%	42	100.00%
		Fall 2013	16	35.56%	29	64.44%	45	100.00%
		Fall 2016	16	41.03%	23	58.97%	39	100.00%
23.1302	Creative Writing	Fall 2010	22	68.75%	10	31.25%	32	100.00%
		Fall 2013	25	71.43%	10	28.57%	35	100.00%
		Fall 2016	22	62.86%	13	37.14%	35	100.00%

CIP	CIP Descr.	Term	Graduate		Total	
			N	%	N	%
23.0101	English Language and Literature, General	Fall 2010	42	100.00%	42	100.00%
		Fall 2013	45	100.00%	45	100.00%
		Fall 2016	39	100.00%	39	100.00%
23.1302	Creative Writing	Fall 2010	32	100.00%	32	100.00%
		Fall 2013	35	100.00%	35	100.00%
		Fall 2016	35	100.00%	35	100.00%



### Headcount by Ethnicity

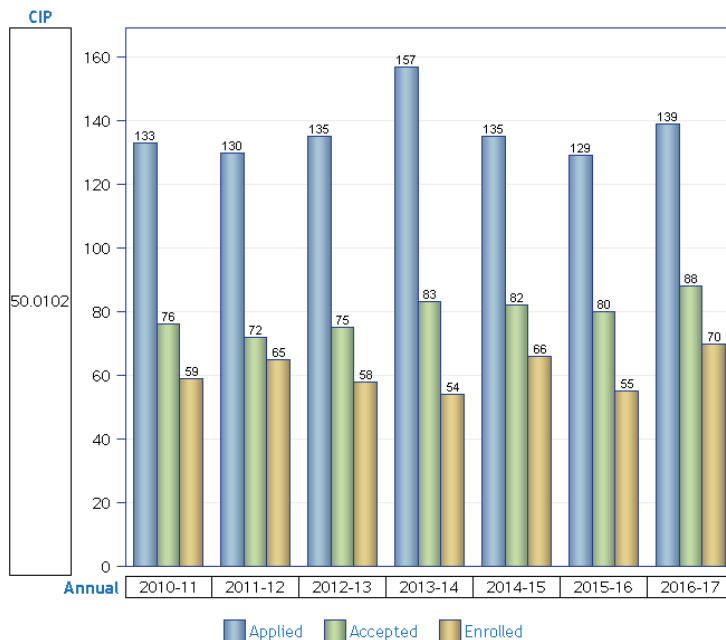


Ethnicity			American Indian/Alaska Native		Asian		Black/African American		Hispanic/Latino		Multi-racial		Non-resident Alien		Not Specified		White		Total			
CIP	CIP Descr.	Term	N	%	N	%	N	%	N	%	N	%	N	%	N	%	N	%	N	%		
23.0101	English Language and Literature, General	Fall 2010	.	.	1	2.38%	2	4.76%	.	.	1	2.38%	.	.	1	2.38%	37	88.10%	42	100.00%		
		Fall 2013	.	.	1	2.22%	.	.	6	13.33%	2	4.44%	.	.	11	24.44%	25	55.56%	45	100.00%		
		Fall 2016	.	.	2	5.13%	.	.	6	15.38%	.	.	1	2.56%	3	7.69%	27	69.23%	39	100.00%		
23.1302	Creative Writing	Fall 2010	.	.	.	.	3	9.38%	3	9.38%	.	.	.	.	.	.	.	.	26	81.25%	32	100.00%
		Fall 2013	1	2.86%	.	.	4	11.43%	2	5.71%	.	.	.	.	4	11.43%	24	68.57%	35	100.00%		
		Fall 2016	.	.	1	2.86%	3	8.57%	1	2.86%	.	.	1	2.86%	2	5.71%	27	77.14%	35	100.00%		

**College of Arts & Humanities**  
**FL Interactv Entertainmnt Acad**  
**Graduate - Master's**

CIP	Plan
50.0102	Interactive Entertainment MS

**Count of Applications**



CIP	CIP Descr.	Annual	Applied	Accepted	Enrolled	Acceptance Rate	Yield Rate
50.0102	Digital Arts	2010-11	133	76	59	57.2	78.1
		2011-12	130	72	65	55	90.2
		2012-13	135	75	58	56.1	77
		2013-14	157	83	54	52.8	64.9
		2014-15	135	82	66	60.5	80.3
		2015-16	129	80	55	61.6	69.3
		2016-17	139	88	70	63.8	79.2

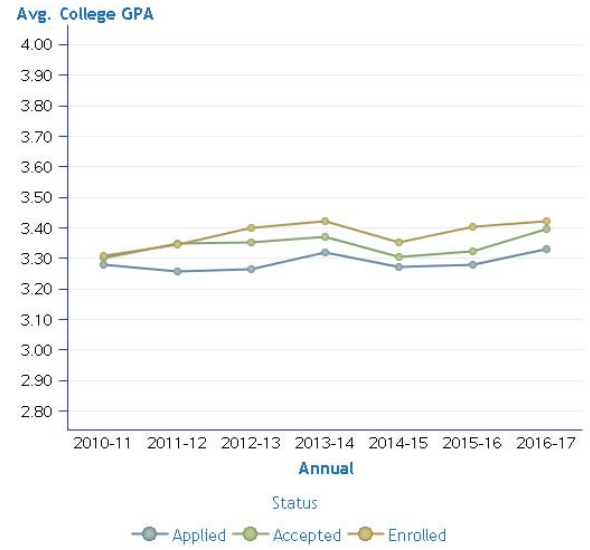
Acceptance Rate = (Accepted / Applied) %

Yield Rate = (Enrolled / Accepted) %

### Average GRE Composite Scores



### Average College GPA



CIP	Annual	Applied		Accepted		Enrolled	
		Avg. GRE Score	N	Avg. GRE Score	N	Avg. GRE Score	N
50.0102	2010-11	304	113	305	69	304	58
	2011-12	304	104	305	68	305	63
	2012-13	308	119	309	75	308	58
	2013-14	309	131	309	77	308	52
	2014-15	309	119	312	80	311	65
	2015-16	307	120	309	78	306	54
	2016-17	309	128	310	86	309	69

CIP	Annual	Applied		Accepted		Enrolled	
		Avg. College GPA	N	Avg. College GPA	N	Avg. College GPA	N
50.0102	2010-11	3.28	129	3.30	76	3.31	59
	2011-12	3.26	123	3.35	72	3.34	65
	2012-13	3.27	128	3.35	75	3.40	58
	2013-14	3.32	144	3.37	83	3.42	54
	2014-15	3.27	127	3.31	82	3.35	66
	2015-16	3.28	120	3.32	80	3.40	55
	2016-17	3.33	134	3.40	88	3.42	70

Note: Scores reflect new GRE grading scale