

Office of Institutional Research - College Report

College of Arts and Humanities - Philosophy



**Program Review**

Institutional Research is asked to provide data for programs under review each reporting cycle. Common definitions are applied to all programs under review, resulting in consistent reporting.

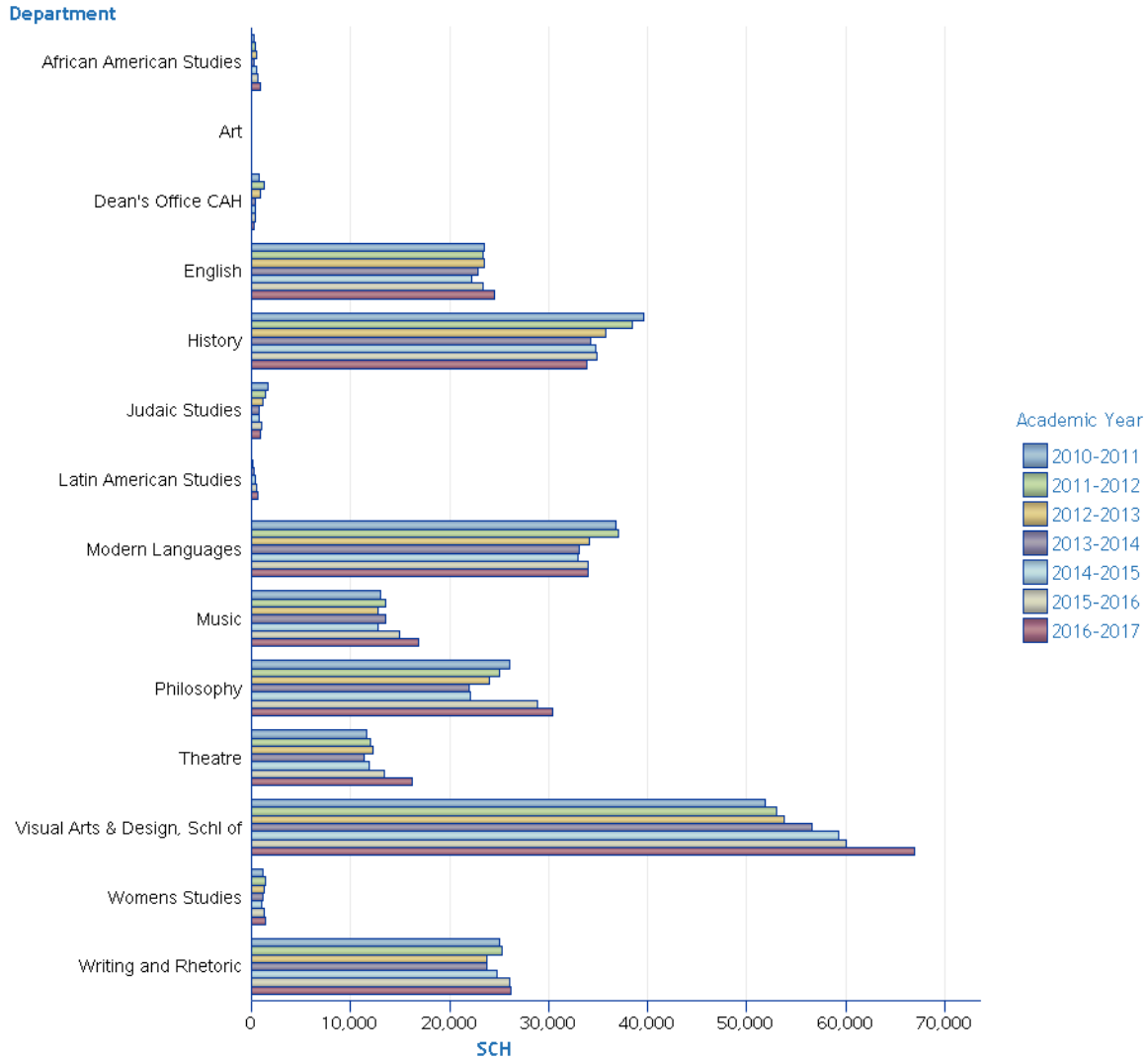
In addition to graphical presentation, many measures include numeric counts of data. The user is cautioned to consider the number of records used in an average. In some cases, a low 'N' may generate results which may be misinterpreted.

Sources:

Contracts & Grants – Dollars & Awards – Office of Research & Commercialization  
 Count of Applications – Admissions File  
 Degrees Granted and Time-to-Degree – Degrees Awarded  
 Headcount and Demographic details – Student Instruction File  
 Instructional Faculty FTE – Fall Staff File  
 Projected Headcount and Degrees – UCF Enrollment and Degree Program Level Projections  
 Scores – SAT, ACT, HS GPA, GRE, and GMAT – Student Instruction File and Scores Table  
 Student Credit Hours (SCH), Class Size, and Count of Sections – Student Data Course File

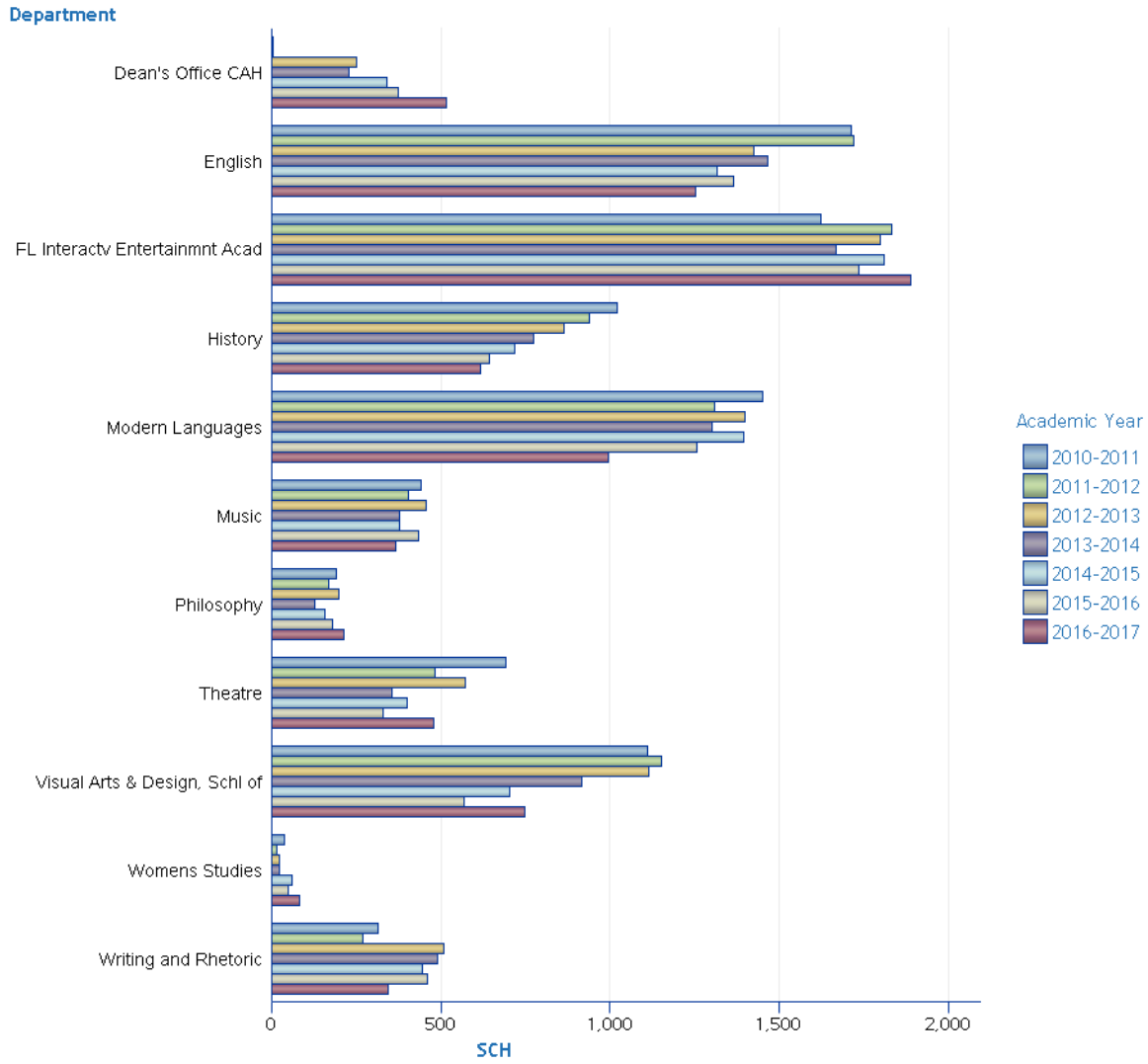
## College of Arts & Humanities

### Total Student Credit Hours by Department - Undergraduate



			SCH						
Academic Year			2010-2011	2011-2012	2012-2013	2013-2014	2014-2015	2015-2016	2016-2017
Career	College	Department							
Undergraduate	College of Arts & Humanities	African American Studies	306	447	459	306	495	657	900
		Art	.	9	.	3	.	.	.
		Dean's Office CAH	811	1,250	930	375	442	437	312
		English	23,494	23,406	23,539	22,856	22,176	23,339	24,513
		History	39,662	38,405	35,787	34,205	34,693	34,827	33,806
		Judaic Studies	1,628	1,407	1,189	808	827	996	870
		Latin American Studies	.	.	162	224	344	502	612
		Modern Languages	36,807	37,036	34,068	33,055	32,913	34,028	33,946
		Music	13,012	13,489	12,823	13,573	12,800	14,945	16,808
		Philosophy	26,100	25,079	24,023	21,966	22,156	28,885	30,350
		Theatre	11,613	12,013	12,281	11,427	11,908	13,434	16,273
		Visual Arts & Design, Schl of	51,883	53,032	53,744	56,639	59,213	60,013	66,932
		Womens Studies	1,157	1,386	1,325	1,170	1,011	1,248	1,389
		Writing and Rhetoric	25,011	25,236	23,771	23,727	24,729	26,079	26,217
<b>Total</b>			<b>231,484</b>	<b>232,195</b>	<b>224,101</b>	<b>220,334</b>	<b>223,707</b>	<b>239,390</b>	<b>252,928</b>

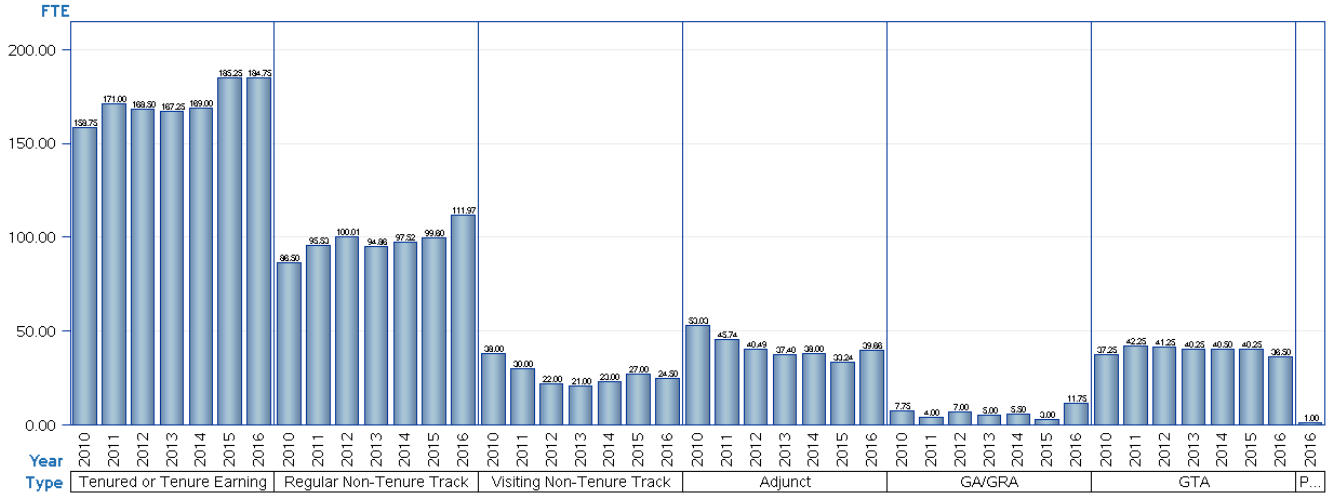
### Total Student Credit Hours by Department - Graduate



			SCH						
Academic Year			2010-2011	2011-2012	2012-2013	2013-2014	2014-2015	2015-2016	2016-2017
Career	College	Department							
Graduate	College of Arts & Humanities	Dean's Office CAH	3	4	249	229	339	373	515
		English	1,711	1,721	1,423	1,465	1,315	1,363	1,252
		FL Interactv Entertainmnt Acad	1,623	1,830	1,797	1,668	1,809	1,734	1,887
		History	1,021	937	862	772	716	643	617
		Modern Languages	1,450	1,308	1,397	1,302	1,395	1,255	993
		Music	440	403	457	377	377	433	367
		Philosophy	192	168	198	126	156	180	213
		Theatre	690	483	571	355	399	329	479
		Visual Arts & Design, Schl of	1,112	1,150	1,113	915	703	567	747
		Womens Studies	36	15	24	24	60	48	81
		Writing and Rhetoric	315	271	510	489	444	459	345
<b>Total</b>			<b>8,593</b>	<b>8,290</b>	<b>8,601</b>	<b>7,722</b>	<b>7,713</b>	<b>7,384</b>	<b>7,496</b>

### College of Arts & Humanities

#### Faculty FTE

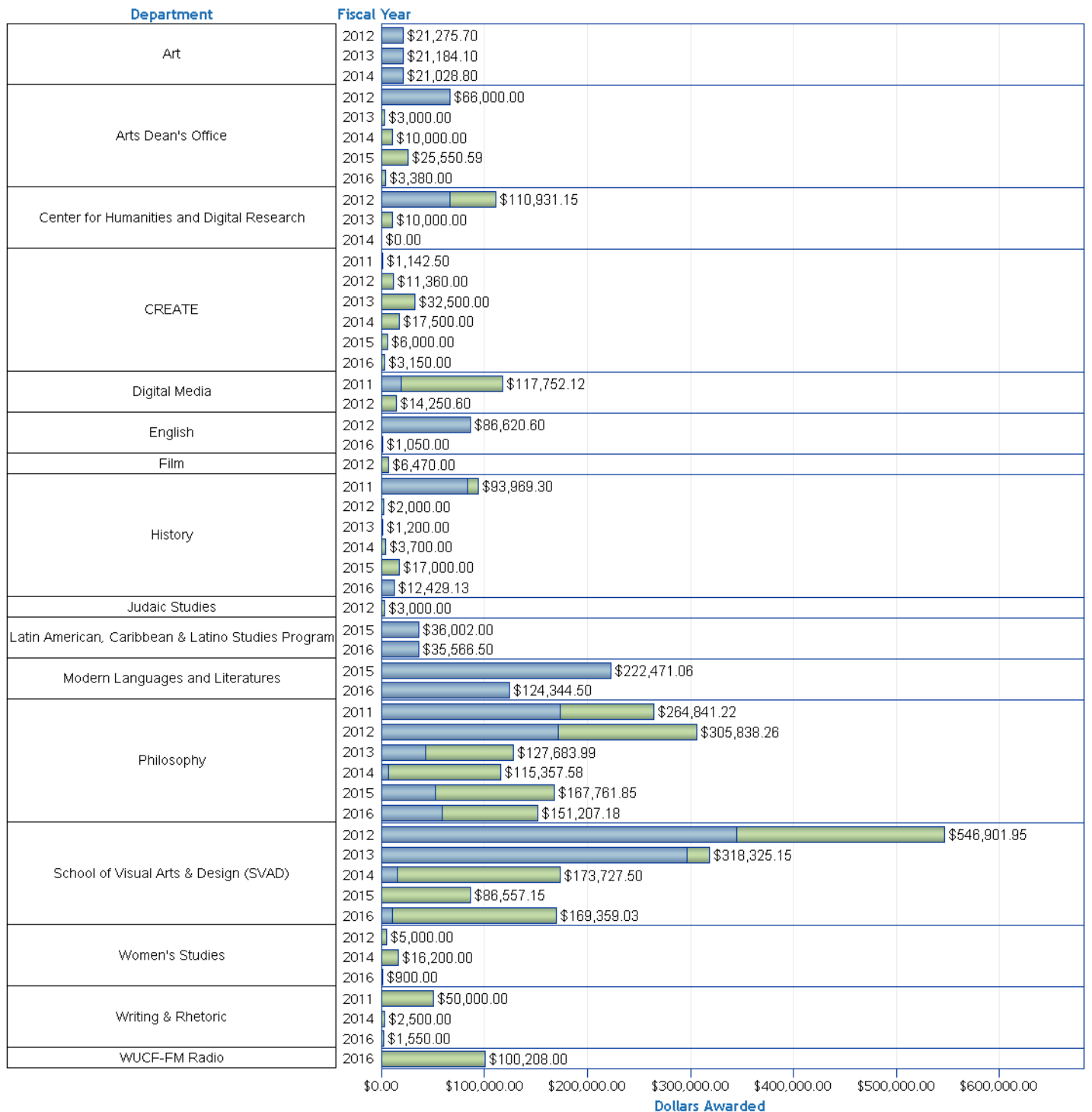


Year		2010		2011		2012		2013		2014		2015		2016	
College	Type	FTE	N	FTE	N	FTE	N	FTE	N	FTE	N	FTE	N	FTE	N
College of Arts & Humanities	Tenured or Tenure Earning	158.75	160	171.00	172	168.50	170	167.25	169	169.00	169	185.25	186	184.75	186
	Regular Non-Tenure Track	86.50	98	95.53	103	100.01	107	94.86	98	97.52	103	99.60	105	111.97	118
	Visiting Non-Tenure Track	38.00	38	30.00	30	22.00	22	21.00	21	23.00	23	27.00	27	24.50	25
	Adjunct	53.03	111	45.74	109	40.49	89	37.40	86	38.00	92	33.24	84	39.66	95
	GA/GRA	7.75	18	4.00	10	7.00	16	5.00	10	5.50	12	3.00	6	11.75	27
	GTA	37.25	75	42.25	89	41.25	83	40.25	81	40.50	82	40.25	81	36.50	75
	Post Doctoral Associate	-	-	-	-	-	-	-	-	-	-	-	-	-	1.00
<b>Total</b>		<b>381.28</b>	<b>500</b>	<b>388.52</b>	<b>513</b>	<b>379.25</b>	<b>487</b>	<b>365.76</b>	<b>465</b>	<b>373.52</b>	<b>481</b>	<b>388.34</b>	<b>489</b>	<b>410.13</b>	<b>527</b>

Includes Faculty FTE based on Primary Department.  
Faculty FTE includes Dual Comp FTE (when applicable).

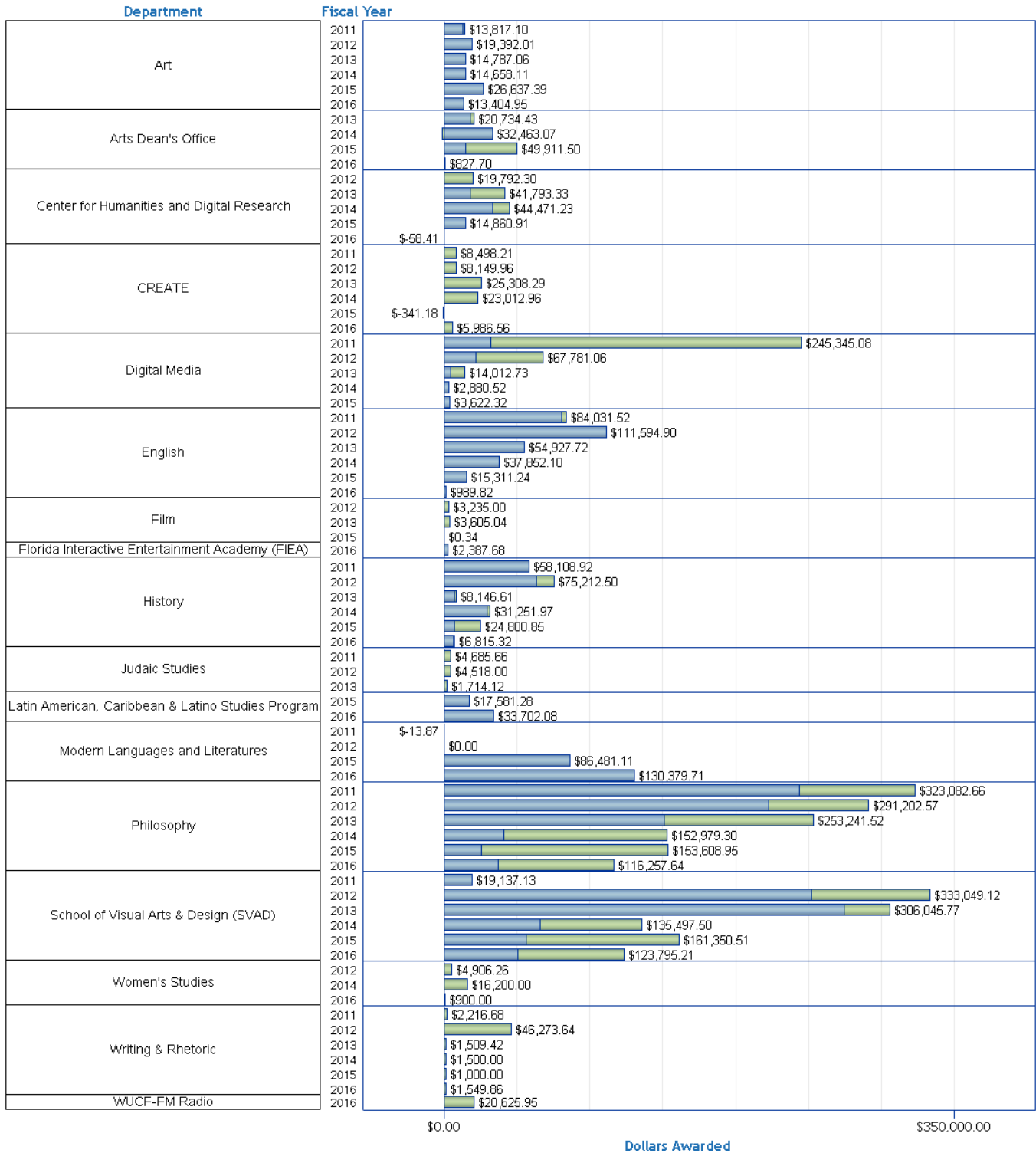
## College of Arts & Humanities

### Contracts and Grants - Awards



Source  
■ Federal    ■ Non-Federal

### Contracts and Grants - Expenditures



Source  
■ Federal ■ Non-Federal

## Awards

College		Dollars Awarded		Total
		Federal	Non-Federal	
Source	Fiscal Year	Federal	Non-Federal	Total
Department	2012	\$21,275.70	.	\$21,275.70
Art	2013	\$21,184.10	.	\$21,184.10
	2014	\$21,028.80	.	\$21,028.80
	2012	\$66,000.00	.	\$66,000.00
Arts Dean's Office	2013	.	\$3,000.00	\$3,000.00
	2014	.	\$10,000.00	\$10,000.00
	2015	.	\$25,550.59	\$25,550.59
	2016	.	\$3,380.00	\$3,380.00
CREATE	2011	.	\$1,142.50	\$1,142.50
	2012	.	\$11,360.00	\$11,360.00
	2013	.	\$32,500.00	\$32,500.00
	2014	.	\$17,500.00	\$17,500.00
	2015	.	\$6,000.00	\$6,000.00
	2016	.	\$3,150.00	\$3,150.00
Center for Humanities and Digital Research	2012	\$66,000.00	\$44,931.15	\$110,931.15
	2013	.	\$10,000.00	\$10,000.00
	2014	.	\$0.00	\$0.00
Digital Media	2011	\$19,332.20	\$98,419.92	\$117,752.12
	2012	.	\$14,250.60	\$14,250.60
English	2012	\$86,620.60	.	\$86,620.60
	2016	\$1,050.00	.	\$1,050.00
Film	2012	.	\$6,470.00	\$6,470.00
History	2011	\$83,470.80	\$10,498.50	\$93,969.30
	2012	.	\$2,000.00	\$2,000.00
	2013	.	\$1,200.00	\$1,200.00
	2014	.	\$3,700.00	\$3,700.00
	2015	.	\$17,000.00	\$17,000.00
	2016	\$12,429.13	.	\$12,429.13
Judaic Studies	2012	.	\$3,000.00	\$3,000.00
Latin American, Caribbean & Latino Studies Program	2015	\$36,002.00	.	\$36,002.00
	2016	\$35,566.50	.	\$35,566.50
Modern Languages and Literatures	2015	\$222,471.06	.	\$222,471.06
	2016	\$124,344.50	.	\$124,344.50
Philosophy	2011	\$173,419.45	\$91,421.78	\$264,841.22
	2012	\$171,093.08	\$134,745.18	\$305,838.26
	2013	\$42,392.25	\$85,291.74	\$127,683.99
	2014	\$6,522.64	\$108,834.94	\$115,357.58
	2015	\$52,368.00	\$115,393.85	\$167,761.85
	2016	\$58,500.00	\$92,707.18	\$151,207.18
School of Visual Arts & Design (SVAD)	2012	\$345,403.95	\$201,498.00	\$546,901.95
	2013	\$296,307.15	\$22,018.00	\$318,325.15
	2014	\$14,779.80	\$158,947.70	\$173,727.50
	2015	.	\$86,557.15	\$86,557.15
2016	\$10,875.00	\$158,484.03	\$169,359.03	
WUCF-FM Radio	2016	.	\$100,208.00	\$100,208.00
Women's Studies	2012	.	\$5,000.00	\$5,000.00
	2014	.	\$16,200.00	\$16,200.00
	2016	\$900.00	.	\$900.00
Writing & Rhetoric	2011	.	\$50,000.00	\$50,000.00
	2014	.	\$2,500.00	\$2,500.00
	2016	.	\$1,550.00	\$1,550.00

## Expenditures

Source		Dollars Awarded		
		Federal	Non-Federal	Total
Department	Fiscal Year	Federal	Non-Federal	Total
Art	2011	\$12,758.09	\$1,059.01	\$13,817.10
	2012	\$19,392.01	.	\$19,392.01
	2013	\$14,787.06	.	\$14,787.06
	2014	\$14,658.11	.	\$14,658.11
	2015	\$26,637.39	.	\$26,637.39
	2016	\$13,404.95	.	\$13,404.95
Arts Dean's Office	2013	\$17,734.43	\$3,000.00	\$20,734.43
	2014	\$33,463.07	\$-1,000.00	\$32,463.07
	2015	\$14,860.91	\$35,050.59	\$49,911.50
	2016	\$-58.41	\$886.12	\$827.70
CREATE	2011	.	\$8,498.21	\$8,498.21
	2012	.	\$8,149.96	\$8,149.96
	2013	.	\$25,308.29	\$25,308.29
	2014	.	\$23,012.96	\$23,012.96
	2015	.	\$-341.18	\$-341.18
	2016	.	\$5,986.56	\$5,986.56
Center for Humanities and Digital Research	2012	.	\$19,792.30	\$19,792.30
	2013	\$17,734.43	\$24,058.90	\$41,793.33
	2014	\$33,463.07	\$11,008.16	\$44,471.23
	2015	\$14,860.91	.	\$14,860.91
2016	\$-58.41	.	\$-58.41	
Digital Media	2011	\$31,732.45	\$213,612.62	\$245,345.08
	2012	\$21,957.15	\$45,823.91	\$67,781.06
	2013	\$4,382.69	\$9,630.04	\$14,012.73
	2014	\$2,880.52	.	\$2,880.52
English	2015	\$3,622.32	\$0.00	\$3,622.32
	2011	\$80,853.67	\$3,177.85	\$84,031.52
	2012	\$111,594.90	.	\$111,594.90
	2013	\$54,927.72	.	\$54,927.72
	2014	\$37,852.10	.	\$37,852.10
	2015	\$15,311.24	.	\$15,311.24
2016	\$989.82	.	\$989.82	
Film	2012	.	\$3,235.00	\$3,235.00
	2013	.	\$3,605.04	\$3,605.04
	2015	.	\$0.34	\$0.34
Florida Interactive Entertainment Academy (FIEA)	2016	\$2,387.68	.	\$2,387.68
History	2011	\$58,108.92	.	\$58,108.92
	2012	\$63,502.00	\$11,710.50	\$75,212.50
	2013	\$7,357.61	\$789.00	\$8,146.61
	2014	\$29,600.95	\$1,651.02	\$31,251.97
	2015	\$7,244.64	\$17,556.21	\$24,800.85
	2016	\$6,532.24	\$283.08	\$6,815.32
Judaic Studies	2011	.	\$4,685.66	\$4,685.66
	2012	.	\$4,518.00	\$4,518.00
	2013	.	\$1,714.12	\$1,714.12
Latin American, Caribbean & Latino Studies Program	2015	\$17,581.28	.	\$17,581.28
	2016	\$33,702.08	.	\$33,702.08
Modern Languages and Literatures	2011	.	\$-13.87	\$-13.87
	2012	\$0.00	.	\$0.00
	2015	\$86,481.11	.	\$86,481.11
	2016	\$130,379.71	.	\$130,379.71
Philosophy	2011	\$244,103.72	\$78,978.94	\$323,082.66
	2012	\$22,712.47	\$68,490.10	\$291,202.57
	2013	\$151,073.66	\$102,167.85	\$253,241.52
	2014	\$40,983.07	\$111,996.23	\$152,979.30
	2015	\$25,376.27	\$128,232.68	\$153,608.95
	2016	\$37,405.34	\$78,852.29	\$116,257.64

## Expenditures

Source		Dollars Awarded		
		Federal	Non-Federal	Total
Department	Fiscal Year			
School of Visual Arts & Design (SVAD)	2011	\$19,137.13	.	\$19,137.13
	2012	\$251,880.69	\$81,168.43	\$333,049.12
	2013	\$274,742.73	\$31,303.04	\$306,045.77
	2014	\$65,842.96	\$69,654.54	\$135,497.50
	2015	\$56,560.64	\$104,789.87	\$161,350.51
	2016	\$50,355.18	\$73,440.03	\$123,795.21
WUCF-FM Radio	2016	.	\$20,625.95	\$20,625.95
Women's Studies	2012	.	\$4,906.26	\$4,906.26
	2014	.	\$16,200.00	\$16,200.00
	2016	\$900.00	.	\$900.00
Writing & Rhetoric	2011	.	\$2,216.68	\$2,216.68
	2012	.	\$46,273.64	\$46,273.64
	2013	.	\$1,509.42	\$1,509.42
	2014	.	\$1,500.00	\$1,500.00
	2015	.	\$1,000.00	\$1,000.00
	2016	.	\$1,549.86	\$1,549.86

Dollar amounts are shared between PI's and Co-PI's. Awards are credited in full to PI's.  
This can sometimes result in data that displays dollars but no corresponding counts in new or incremental awards.

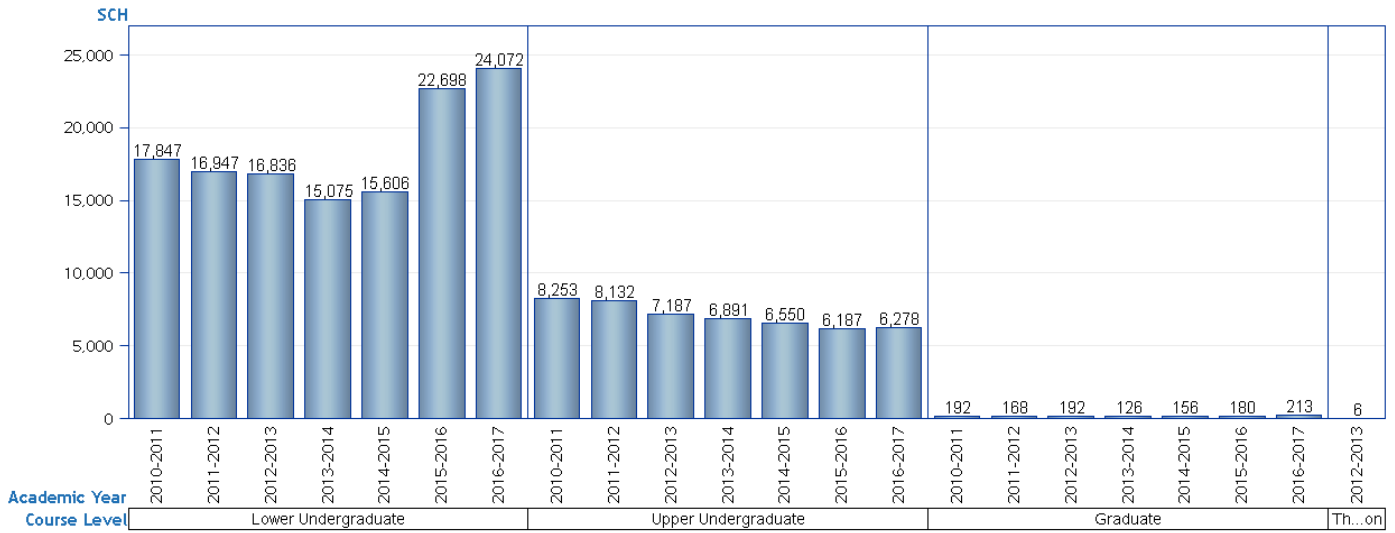
Office of Institutional Research. Source: Office of Research & Commercialization. [Printed on: Tuesday, March 28, 2017 12:17:42 PM EDT]



College of Arts & Humanities

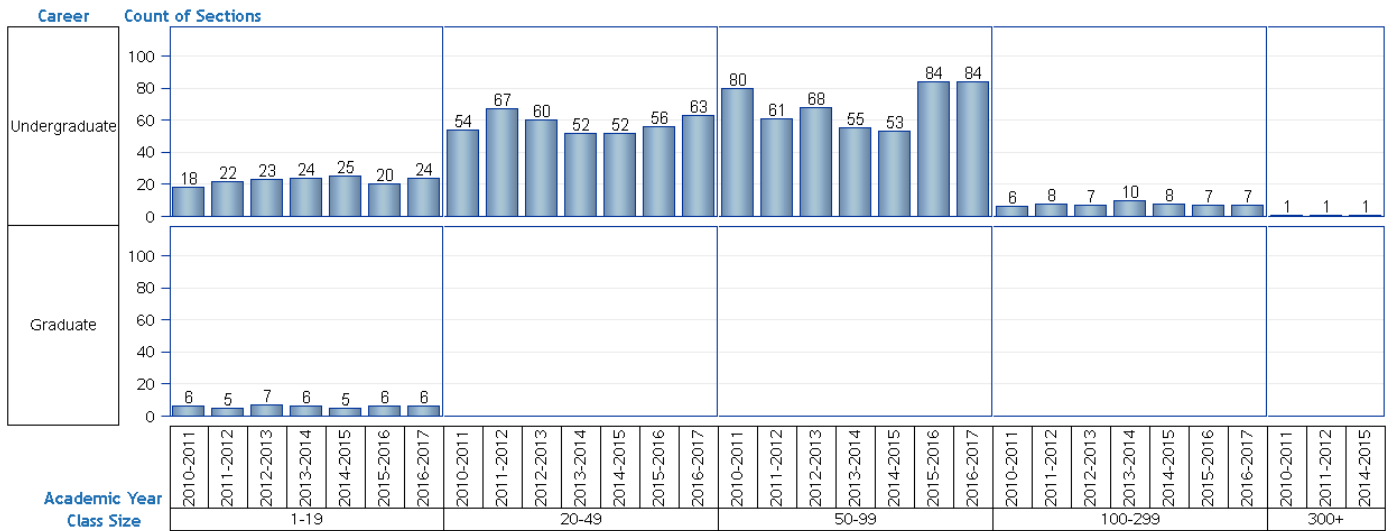
Philosophy

Total Student Credit Hours by Course Level



Academic Year		SCH						
Department	Course Level	2010-2011	2011-2012	2012-2013	2013-2014	2014-2015	2015-2016	2016-2017
Philosophy	Lower Undergraduate	17,847	16,947	16,836	15,075	15,606	22,698	24,072
	Upper Undergraduate	8,253	8,132	7,187	6,891	6,550	6,187	6,278
	Graduate	192	168	192	126	156	180	213
	Thesis/Dissertation	.	.	6	.	.	.	.
<b>Total</b>		<b>26,292</b>	<b>25,247</b>	<b>24,221</b>	<b>22,092</b>	<b>22,312</b>	<b>29,065</b>	<b>30,563</b>

Count of Sections - Lecture



Academic Year				Count of Sections						
Department	Career	Course Component	Class Size	2010-2011	2011-2012	2012-2013	2013-2014	2014-2015	2015-2016	2016-2017
Philosophy	Undergraduate	Lecture	1-19	18	22	23	24	25	20	24
			20-49	54	67	60	52	52	56	63
			50-99	80	61	68	55	53	84	84
			100-299	6	8	7	10	8	7	7
			300+	1	1	.	.	1	.	.
	Graduate	Lecture	1-19	6	5	7	6	5	6	6

## Count of Sections - Lab

No values were returned for this graph.

No values were returned for this table.

## College of Arts &amp; Humanities

## Philosophy

## Total Student Credit Hours by Course Location

Academic Year		Student Credit Hours							%						
		2010-2011	2011-2012	2012-2013	2013-2014	2014-2015	2015-2016	2016-2017	2010-2011	2011-2012	2012-2013	2013-2014	2014-2015	2015-2016	2016-2017
Department	Course Location														
Philosophy	Main Campus (Orlando)	19,937.0	18,915.0	17,800.0	15,186.0	14,797.0	19,801.0	18,070.0	75.83%	74.92%	73.49%	68.74%	66.32%	68.13%	59.12%
	Main Off Campus	2,152.0	2,174.0	2,287.0	2,877.0	4,194.0	5,280.0	12,493.0	8.18%	8.61%	9.44%	13.02%	18.80%	18.17%	40.88%
	UCF Central Region Off Campus	4,203.0	4,158.0	4,134.0	4,029.0	3,321.0	3,984.0	.	15.99%	16.47%	17.07%	18.24%	14.88%	13.71%	.
<b>Total</b>		<b>26,292.0</b>	<b>25,247.0</b>	<b>24,221.0</b>	<b>22,092.0</b>	<b>22,312.0</b>	<b>29,065.0</b>	<b>30,563.0</b>	<b>100.00%</b>	<b>100.00%</b>	<b>100.00%</b>	<b>100.00%</b>	<b>100.00%</b>	<b>100.00%</b>	<b>100.00%</b>

## Total Student Credit Hours by Course Instruction Mode

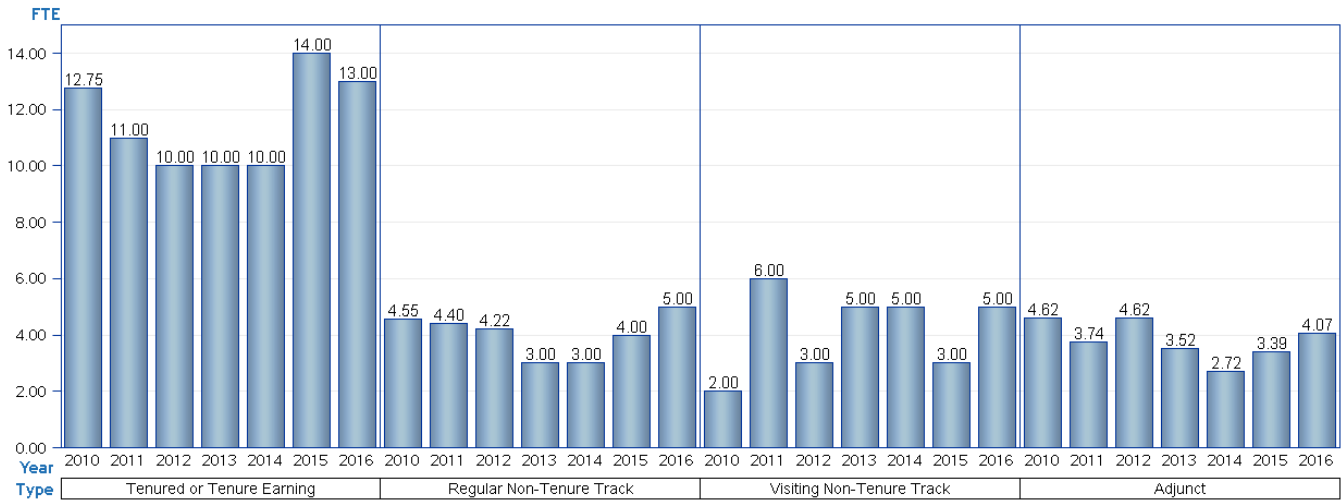
Academic Year		Student Credit Hours							%						
		2010-2011	2011-2012	2012-2013	2013-2014	2014-2015	2015-2016	2016-2017	2010-2011	2011-2012	2012-2013	2013-2014	2014-2015	2015-2016	2016-2017
Department	Course Instruction Mode														
Philosophy	Face to Face Instruction (P)	18,965.0	17,767.0	17,483.0	14,718.0	14,383.0	19,186.0	17,644.0	72.13%	70.37%	72.18%	66.62%	64.46%	66.01%	57.73%
	Mixed Mode/ReducedSeatTime (M)	792.0	789.0	414.0	516.0	495.0	561.0	453.0	3.01%	3.13%	1.71%	2.34%	2.22%	1.93%	1.48%
	World Wide Web (W)	6,535.0	6,691.0	6,324.0	6,858.0	7,434.0	9,318.0	12,466.0	24.86%	26.50%	26.11%	31.04%	33.32%	32.06%	40.79%
<b>Total</b>		<b>26,292.0</b>	<b>25,247.0</b>	<b>24,221.0</b>	<b>22,092.0</b>	<b>22,312.0</b>	<b>29,065.0</b>	<b>30,563.0</b>	<b>100.00%</b>	<b>100.00%</b>	<b>100.00%</b>	<b>100.00%</b>	<b>100.00%</b>	<b>100.00%</b>	<b>100.00%</b>

Office of Institutional Research. Source: Student Credit Hours Fact. [Printed on: Wednesday, March 29, 2017 12:25:14 PM EDT]

College of Arts & Humanities

Philosophy

Faculty FTE



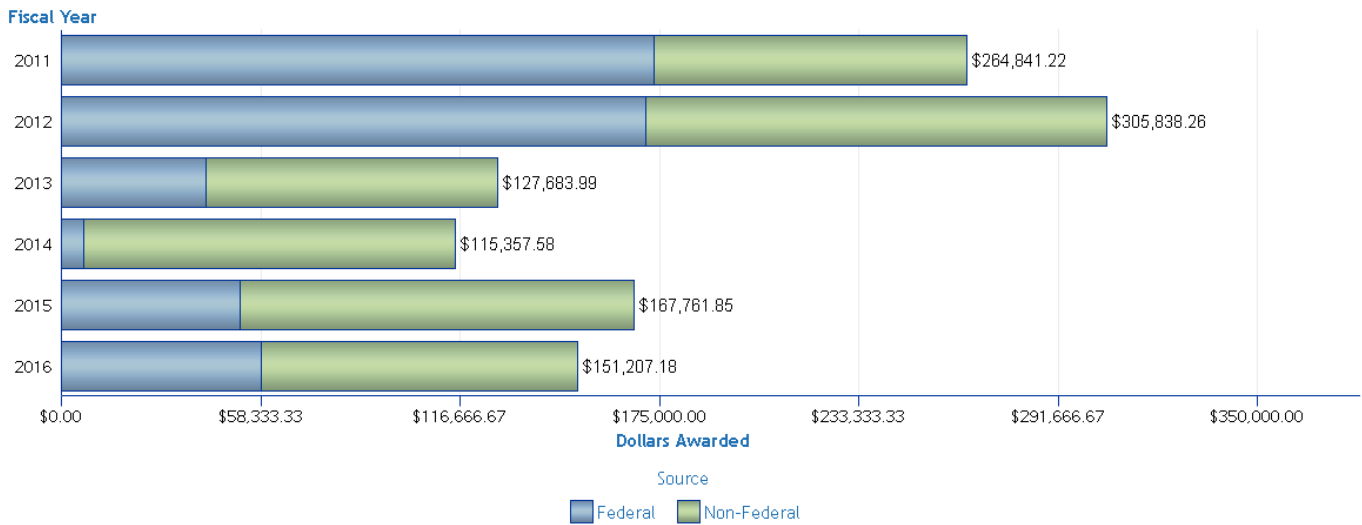
Year		2010		2011		2012		2013		2014		2015		2016	
Department	Type	FTE	N	FTE	N	FTE	N	FTE	N	FTE	N	FTE	N	FTE	N
Philosophy	Tenured or Tenure Earning	12.75	13	11.00	11	10.00	10	10.00	10	10.00	10	14.00	14	13.00	13
	Regular Non-Tenure Track	4.55	6	4.40	5	4.22	5	3.00	3	3.00	3	4.00	4	5.00	5
	Visiting Non-Tenure Track	2.00	2	6.00	6	3.00	3	5.00	5	5.00	5	3.00	3	5.00	5
	Adjunct	4.62	10	3.74	9	4.62	8	3.52	8	2.72	7	3.39	7	4.07	7
<b>Total</b>		<b>23.92</b>	<b>31</b>	<b>25.14</b>	<b>31</b>	<b>21.84</b>	<b>26</b>	<b>21.52</b>	<b>26</b>	<b>20.72</b>	<b>25</b>	<b>24.39</b>	<b>28</b>	<b>27.07</b>	<b>30</b>

Includes Faculty FTE based on Primary Department.  
Faculty FTE includes Dual Comp FTE (when applicable).

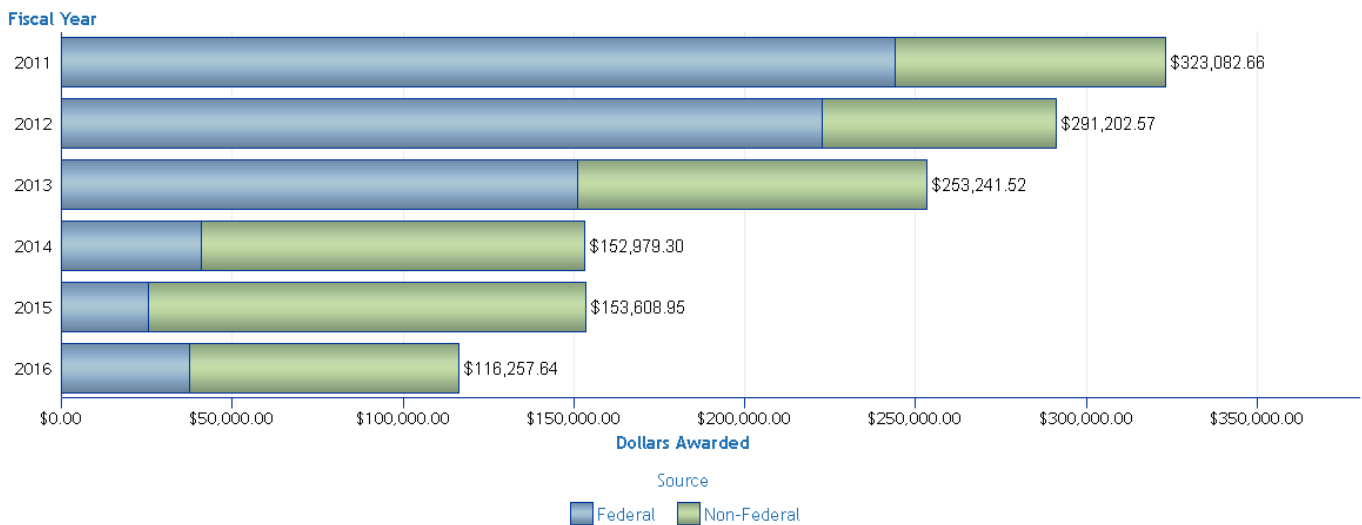
## College of Arts & Humanities

### Philosophy

#### Contracts and Grants - Awards



#### Contracts and Grants - Expenditures



#### Awards

Source	Federal	Non-Federal	Total
	Dollars Awarded	Dollars Awarded	Dollars Awarded
Fiscal Year			
2011	\$173,419.45	\$91,421.78	\$264,841.22
2012	\$171,093.08	\$134,745.18	\$305,838.26
2013	\$42,392.25	\$85,291.74	\$127,683.99
2014	\$6,522.64	\$108,834.94	\$115,357.58
2015	\$52,368.00	\$115,393.85	\$167,761.85
2016	\$58,500.00	\$92,707.18	\$151,207.18

#### Expenditures

Source	Federal	Non-Federal	Total
	Dollars Awarded	Dollars Awarded	Dollars Awarded
Fiscal Year			
2011	\$244,103.72	\$78,978.94	\$323,082.66
2012	\$222,712.47	\$68,490.10	\$291,202.57
2013	\$151,073.66	\$102,167.85	\$253,241.52
2014	\$40,983.07	\$111,996.23	\$152,979.30
2015	\$25,376.27	\$128,232.68	\$153,608.95
2016	\$37,405.34	\$78,852.29	\$116,257.64

#### Counts of New and Continuing Awards

Source	Federal		Non-Federal	
	New	Incremental	New	Incremental
Fiscal Year				
2011	0	0	1	3
2012	1	0	0	0
2013	0	0	0	0
2014	0	0	0	0
2015	0	0	1	0
2016	0	0	0	1

Total Amount = funding received from external sources in the given fiscal year for the department.  
(This amount is using credit splits when awards are shared among departments)

Incremental counts reflect awards that continue past the initial year. This can sometimes result in data that displays dollars but no corresponding counts in new or incremental awards.

Dollar amounts are shared between PIs and Co-PIs. Awards are credited in full to PIs

College of Arts & Humanities

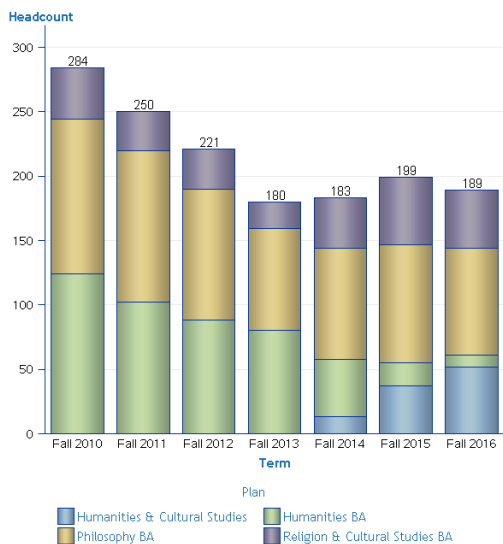
Philosophy

Undergraduate

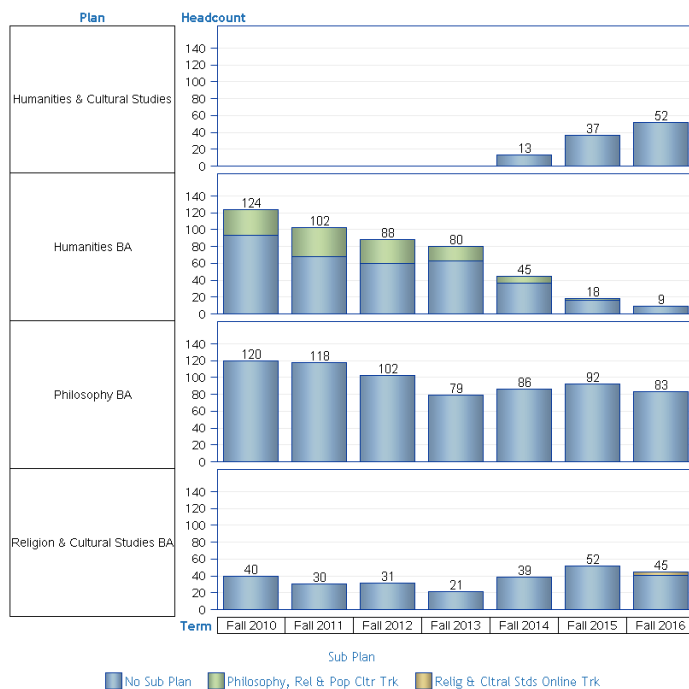
CIP	Plan	Sub Plan
24.0103	Humanities & Cultural Studies	No Sub Plan
24.0103	Humanities BA	No Sub Plan
24.0103	Humanities BA	Philosophy, Rel & Pop Ctr Trk
38.0101	Philosophy BA	No Sub Plan
38.0201	Religion & Cultural Studies BA	No Sub Plan
38.0201	Religion & Cultural Studies BA	Relig & Ctral Stds Online Trk

Pending Majors are not displayed in charts

Headcount in Major by Plan



Headcount in Major by Plan and Sub Plan



Headcount	Plan Type	Plan	Term						
			Fall 2010	Fall 2011	Fall 2012	Fall 2013	Fall 2014	Fall 2015	Fall 2016
MAJ		Humanities & Cultural Studies	-	-	-	-	13	37	52
		Humanities BA	124	102	88	80	45	18	9
		Philosophy BA	120	118	102	79	86	92	83
		Religion & Cultural Studies BA	40	30	31	21	39	52	45
<b>Total</b>			<b>284</b>	<b>250</b>	<b>221</b>	<b>180</b>	<b>183</b>	<b>199</b>	<b>189</b>

Headcount	Plan Type	Plan	Sub Plan	Term						
				Fall 2010	Fall 2011	Fall 2012	Fall 2013	Fall 2014	Fall 2015	Fall 2016
MAJ		Humanities & Cultural Studies	No Sub Plan	-	-	-	-	13	37	52
			Relig & Ctral Stds Online Trk	-	-	-	-	-	-	-
		Humanities BA	No Sub Plan	93	68	60	63	37	16	9
			Philosophy, Rel & Pop Ctr Trk	31	34	28	17	8	2	-
Philosophy BA	No Sub Plan	120	118	102	79	86	92	83		
	Relig & Ctral Stds Online Trk	0	0	0	0	0	0	0		
Religion & Cultural Studies BA	No Sub Plan	40	30	31	21	39	52	41		
	Relig & Ctral Stds Online Trk	-	-	-	-	-	-	4		
<b>Total</b>				<b>284</b>	<b>250</b>	<b>221</b>	<b>180</b>	<b>183</b>	<b>199</b>	<b>189</b>

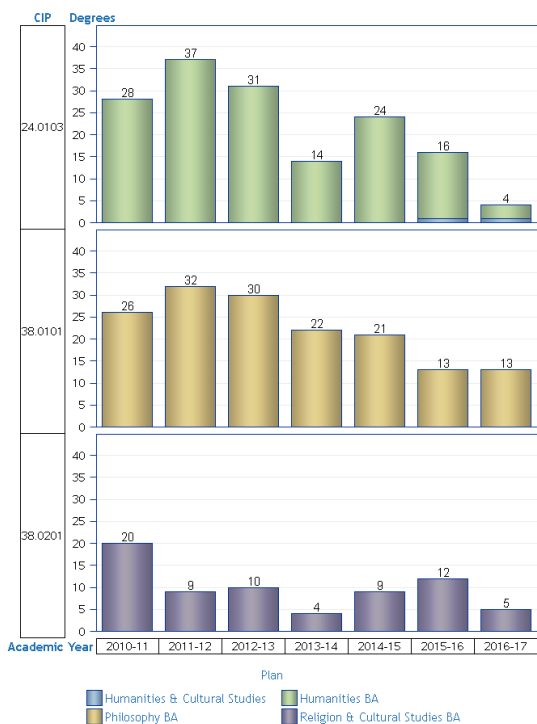
No values were returned for this table.

College of Arts & Humanities

Philosophy

Undergraduate

Degrees Granted by Plan



Degrees Granted by Plan and Sub Plan



CIP	Plan	Academic Year						
		2010-11	2011-12	2012-13	2013-14	2014-15	2015-16	2016-17
Degrees	24.0103 Humanities & Cultural Studies	-	-	-	-	-	-	1
	24.0103 Humanities BA	28	37	31	14	24	15	3
	38.0101 Philosophy BA	26	32	30	22	21	13	13
	38.0201 Religion & Cultural Studies BA	20	9	10	4	9	12	5
<b>Total</b>		<b>74</b>	<b>78</b>	<b>71</b>	<b>40</b>	<b>54</b>	<b>41</b>	<b>22</b>

CIP	Plan	Sub Plan	Academic Year						
			2010-11	2011-12	2012-13	2013-14	2014-15	2015-16	2016-17
Degrees	24.0103 Humanities & Cultural Studies		-	-	-	-	-	1	
	24.0103 Humanities BA	Philosophy, Rel & Pop Ctr Trk	21	24	21	11	22	12	
	38.0101 Philosophy BA		7	13	10	3	2	3	
	38.0201 Religion & Cultural Studies BA		26	32	30	22	21	13	
<b>Total</b>			<b>74</b>	<b>78</b>	<b>71</b>	<b>40</b>	<b>54</b>	<b>41</b>	

Honors in the Major Awarded

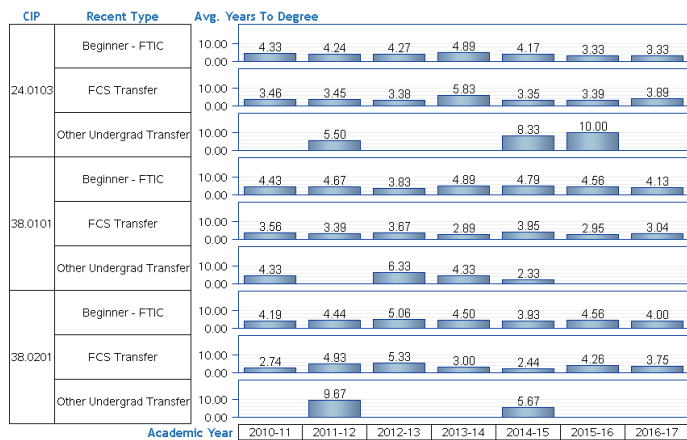
CIP	Plan	Academic Year					
		2010-11	2011-12	2012-13	2013-14	2014-15	2016-17
Degrees	Honors In Major	-	-	-	-	-	-
	Honors in Humanities	1	4	1	-	-	-
	Honors in Philosophy	4	4	4	3	3	2
	Honors in Religious Studies	1	-	-	-	-	-
	Honors in Religious Study	1	-	-	-	-	-

Minors and Undergraduate Certificates Awarded

Department	CIP	Degree Type	Plan	Academic Year							
				2010-11	2011-12	2012-13	2013-14	2014-15	2015-16	2016-17	
Degrees	24.0103	Minor	Humanities Minor	3	9	6	5	7	5	1	
			Subtotal	3	9	6	5	7	5	1	
		Subtotal	3	9	6	5	7	5	1		
	38.0101	Minor	Cognitive Sciences Minor	22	43	40	40	41	35	21	
			Hmanities & Ctrl Stds Minor	-	-	-	-	-	-	2	
		Philosophy Minor	10	18	16	14	14	12	7		
		Philosophy, Rel & Pop Ctr Min	8	7	6	6	4	-	-		
		Subtotal	40	68	62	60	59	47	30		
	Subtotal	40	68	62	60	59	47	30			
	38.0201	Minor	Religion & Cultural Stdies Min	21	19	17	11	8	10	6	
			Subtotal	21	19	17	11	8	10	6	
		Subtotal	21	19	17	11	8	10	6		
	<b>Total</b>		<b>Subtotal</b>	<b>Subtotal</b>	<b>64</b>	<b>96</b>	<b>85</b>	<b>76</b>	<b>74</b>	<b>62</b>	<b>37</b>

Time to Degree

Includes enrolled and non-enrolled semesters. A year is 3 semesters



CIP	Degree Level	Plan	Recent Type	Academic Year	N	Avg. Years To Degree
24.0103	Bachelor	Humanities & Cultural Studies	FCS Transfer	2015-16	1	2.67
				2016-17	1	2.00
				2010-11	9	4.33
			Beginner - FTIC	2011-12	15	4.24
				2012-13	10	4.27
				2013-14	6	4.89
				2014-15	6	4.17
				2015-16	4	3.33
				2016-17	1	3.33
		Humanities BA	FCS Transfer	2010-11	19	3.46
				2011-12	20	3.45
				2012-13	21	3.38
			Other Undergrad Transfer	2013-14	8	5.83
				2014-15	17	3.35
				2015-16	10	3.47
				2016-17	2	4.83
				2011-12	2	5.50
				2014-15	1	8.33
38.0101	Bachelor	Philosophy BA	Beginner - FTIC	2015-16	1	10.00
				2010-11	7	4.43
				2011-12	14	4.67
			FCS Transfer	2012-13	12	3.83
				2013-14	12	4.89
				2014-15	13	4.79
				2015-16	6	4.56
				2016-17	5	4.13
				2010-11	16	3.56
		Other Undergrad Transfer	2011-12	18	3.39	
			2012-13	17	3.67	
			2013-14	9	2.89	
			2014-15	7	3.95	
			2015-16	7	2.95	
			2016-17	8	3.04	
			2010-11	3	4.33	
			2012-13	1	6.33	
			2013-14	1	4.33	
38.0201	Bachelor	Religion & Cultural Studies BA	Beginner - FTIC	2010-11	7	4.19
				2011-12	3	4.44
				2012-13	6	5.06
			FCS Transfer	2013-14	2	4.50
				2014-15	5	3.93
				2015-16	3	4.56
				2016-17	1	4.00
				2010-11	13	2.74
				2011-12	5	4.93
		Other Undergrad Transfer	2012-13	4	5.33	
			2013-14	2	3.00	
			2014-15	3	2.44	
			2015-16	9	4.26	
			2016-17	4	3.75	
			2011-12	1	9.67	
			2014-15	1	5.67	

Range Acad Years to Degree					<=2		>2 and <=3		>3 and <=4		>4 and <=5		>5 and <=6		>6		Total			
CIP	Degree Level	Plan	Recent Type	Academic Year	N	%	N	%	N	%	N	%	N	%	N	%	N	%		
24.0103	Bachelor	Humanities & Cultural Studies	FCS Transfer	2015-16	-	-	1	100.00%	-	-	-	-	-	-	-	-	1	100.00%		
				2016-17	1	100.00%	-	-	-	-	-	-	-	-	-	-	-	1	100.00%	
				2010-11	1	11.11%	-	-	3	33.33%	1	11.11%	4	44.44%	-	-	-	9	100.00%	
			Beginner - FTIC	2011-12	-	-	7	46.67%	7	46.67%	1	6.67%	-	-	-	-	-	15	100.00%	
				2012-13	-	-	4	40.00%	6	60.00%	-	-	-	-	-	-	-	10	100.00%	
				2013-14	-	-	1	16.67%	3	50.00%	2	33.33%	-	-	-	-	-	6	100.00%	
				2014-15	-	-	1	16.67%	2	33.33%	3	50.00%	-	-	-	-	-	6	100.00%	
				2015-16	-	-	2	50.00%	2	50.00%	-	-	-	-	-	-	-	4	100.00%	
				2016-17	-	-	-	-	1	100.00%	-	-	-	-	-	-	-	1	100.00%	
		Humanities BA	FCS Transfer	2010-11	1	5.26%	8	42.11%	4	21.05%	5	26.32%	1	5.26%	1	5.26%	-	-	19	100.00%
				2011-12	3	15.00%	7	35.00%	7	35.00%	1	5.00%	1	5.00%	1	5.00%	-	-	20	100.00%
				2012-13	5	23.81%	6	28.57%	6	28.57%	1	4.76%	1	4.76%	2	9.52%	-	-	21	100.00%
			Other Undergrad Transfer	2013-14	1	12.50%	2	25.00%	2	25.00%	1	12.50%	-	-	2	25.00%	-	-	8	100.00%
				2014-15	3	17.65%	7	41.18%	3	17.65%	1	5.88%	2	11.76%	1	5.88%	-	-	17	100.00%
				2015-16	-	-	5	50.00%	3	30.00%	1	10.00%	1	10.00%	-	-	-	-	10	100.00%
				2016-17	-	-	-	-	1	50.00%	1	50.00%	-	-	-	-	-	-	2	100.00%
				2011-12	-	-	-	-	-	-	1	50.00%	-	-	1	50.00%	-	-	2	100.00%
				2014-15	-	-	-	-	-	-	-	-	-	-	1	100.00%	-	-	1	100.00%
38.0101	Bachelor	Philosophy BA	Beginner - FTIC	2010-11	-	-	3	42.86%	3	42.86%	1	14.29%	-	-	-	-	-	7	100.00%	
				2011-12	-	-	6	42.86%	4	28.57%	2	14.29%	2	14.29%	-	-	-	14	100.00%	
				2012-13	-	-	2	16.67%	7	58.33%	2	16.67%	1	8.33%	-	-	-	12	100.00%	
			FCS Transfer	2013-14	-	-	4	33.33%	3	25.00%	3	25.00%	3	25.00%	2	16.67%	-	-	12	100.00%
				2014-15	-	-	1	7.69%	3	23.08%	4	30.77%	4	30.77%	1	7.69%	-	-	13	100.00%
				2015-16	-	-	-	-	3	50.00%	2	33.33%	-	-	1	16.67%	-	-	6	100.00%
				2016-17	-	-	-	-	2	40.00%	3	60.00%	-	-	-	-	-	-	5	100.00%
				2010-11	2	12.50%	11	68.75%	1	6.25%	-	-	-	-	2	12.50%	-	-	16	100.00%
				2011-12	5	27.78%	7	38.89%	2	11.11%	2	11.11%	1	5.56%	1	5.56%	-	-	18	100.00%
		Other Undergrad Transfer	2012-13	3	17.65%	9	52.94%	3	17.65%	-	-	1	5.88%	1	5.88%	-	-	17	100.00%	
			2013-14	2	22.22%	4	44.44%	2	22.22%	1	11.11%	-	-	-	-	-	9	100.00%		
			2014-15	1	14.29%	1	14.29%	1	14.29%	3	42.86%	-	-	1	14.29%	-	-	7	100.00%	
			2015-16	1	14.29%	3	42.86%	2	28.57%	1	14.29%	-	-	-	-	-	7	100.00%		
			2016-17	4	50.00%	1	12.50%	1	12.50%	1	12.50%	1	12.50%	-	-	-	8	100.00%		
			2010-11	-	-	-	-	2	66.67%	-	-	1	33.33%	-	-	-	3	100.00%		
			2012-13	-	-	-	-	-	-	-	-	-	1	100.00%	-	-	-	1	100.00%	
			2013-14	-	-	-	-	-	-	-	-	1	100.00%	-	-	-	1	100.00%		
			2014-15	-	-	1	100.00%	-	-	-	-	-	-	-	-	-	1	100.00%		
38.0201	Bachelor	Religion & Cultural Studies BA	Beginner - FTIC	2010-11	-	-	2	28.57%	2	28.57%	2	28.57%	-	-	1	14.29%	-	-	7	100.00%
				2011-12	-	-	-	-	3	100.00%	-	-	-	-	-	-	-	3	100.00%	
				2012-13	-	-	-	-	2	33.33%	1	16.67%	1	16.67%	2	33.33%	-	-	6	100.00%
			FCS Transfer	2013-14	-	-	-	-	1	50.00%	1	50.00%	-	-	-	-	-	2	100.00%	
				2014-15	-	-	-	-	4	80.00%	1	20.00%	-	-	-	-	-	5	100.00%	
				2015-16	-	-	-	-	1	33.33%	1	33.33%	1	33.33%	-	-	-	3	100.00%	
				2016-17	-	-	-	-	1	100.00%	-	-	-	-	-	-	-	1	100.00%	
				2010-11	3	23.08%	5	38.46%	4	30.77%	1	7.69%	-	-	-	-	-	13	100.00%	
				2011-12	1	20.00%	2	40.00%	1	20.00%	-	-	-	-	1	20.00%	-	-	5	100.00%
		Other Undergrad Transfer	2012-13	1	25.00%	-	-	1	25.00%	-	-	-	-	-	2	50.00%	-	-	4	100.00%
			2013-14	1	50.00%	-	-	1	50.00%	-	-	-	-	-	-	-	2	100.00%		
			2014-15	1	33.33%	2	66.67%	-	-	-	-	-	-	-	-	-	3	100.00%		
			2015-16	1	11.11%	3	33.33%	2	22.22%	1	11.11%	-	-	2	22.22%	-	-	9	100.00%	
			2016-17	-	-	3	75.00%	-	-	-	-	-	-	-	1	25.00%	-	-	4	100.00%
			2011-12	-	-	-	-	-	-	-	-	-	-	-	1	100.00%	-	-	1	100.00%
			2014-15	-	-	-	-	-	-	-	-	-	1	100.00%	-	-	-	1	100.00%	



College of Arts & Humanities

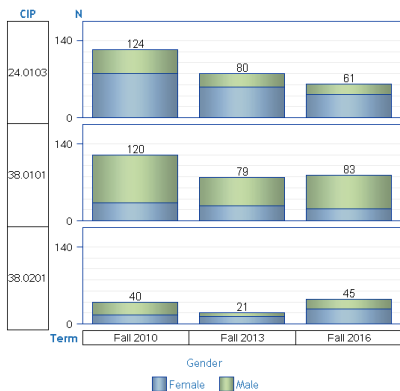
Philosophy

Undergraduate

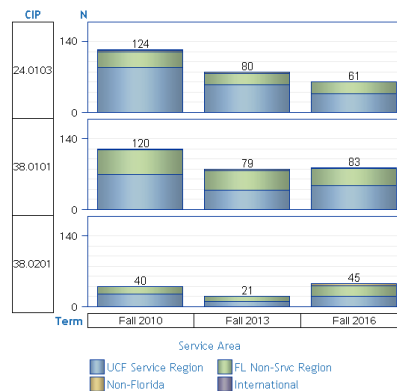
CIP	Plan	Sub Plan
24.0103	Humanities & Cultural Studies	No Sub Plan
24.0103	Humanities BA	No Sub Plan
24.0103	Humanities BA	Philosophy, Rel & Pop Ctr Trk
38.0101	Philosophy BA	No Sub Plan
38.0201	Religion & Cultural Studies BA	No Sub Plan
38.0201	Religion & Cultural Studies BA	Relig & Citral Sids Online Trk

Excludes students in a Pending Major

Headcount by Gender



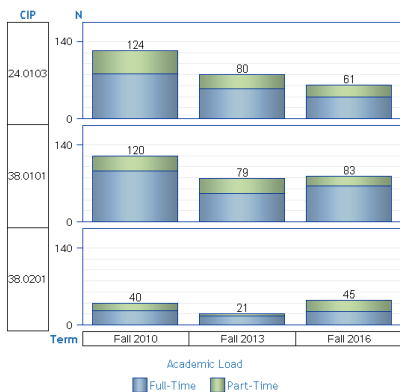
Headcount by Service Area



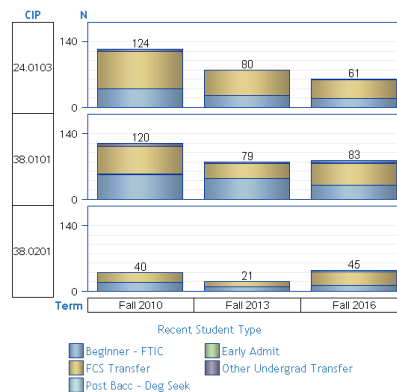
CIP	CIP Descr.	Term	Female		Male		Total	
			N	%	N	%	N	%
24.0103	Humanities/Humanistic Studies	Fall 2010	80	64.52%	44	35.48%	124	100.00%
		Fall 2013	56	70.00%	24	30.00%	80	100.00%
		Fall 2016	42	68.85%	19	31.15%	61	100.00%
38.0101	Philosophy	Fall 2010	32	26.67%	88	73.33%	120	100.00%
		Fall 2013	27	34.18%	52	65.82%	79	100.00%
		Fall 2016	22	26.51%	61	73.49%	83	100.00%
38.0201	Religion/Religious Studies	Fall 2010	16	40.00%	24	60.00%	40	100.00%
		Fall 2013	14	66.67%	7	33.33%	21	100.00%
		Fall 2016	27	60.00%	18	40.00%	45	100.00%

CIP	CIP Descr.	Term	UCF Service Region		FL Non-Srvc Region		Non-Florida		International		Total	
			N	%	N	%	N	%	N	%	N	%
24.0103	Humanities/Humanistic Studies	Fall 2010	88	70.97%	31	25.00%	4	3.23%	1	0.81%	124	100.00%
		Fall 2013	55	68.75%	22	27.50%	2	2.50%	1	1.25%	80	100.00%
		Fall 2016	37	60.66%	23	37.70%	1	1.64%	0	0.00%	61	100.00%
38.0101	Philosophy	Fall 2010	70	58.33%	48	40.00%	1	0.83%	1	0.83%	120	100.00%
		Fall 2013	39	49.37%	37	46.84%	3	3.80%	0	0.00%	79	100.00%
		Fall 2016	47	56.63%	34	40.96%	2	2.41%	0	0.00%	83	100.00%
38.0201	Religion/Religious Studies	Fall 2010	25	62.50%	15	37.50%	0	0.00%	0	0.00%	40	100.00%
		Fall 2013	10	47.62%	11	52.38%	0	0.00%	0	0.00%	21	100.00%
		Fall 2016	21	46.67%	20	44.44%	4	8.89%	0	0.00%	45	100.00%

Headcount by Academic Load



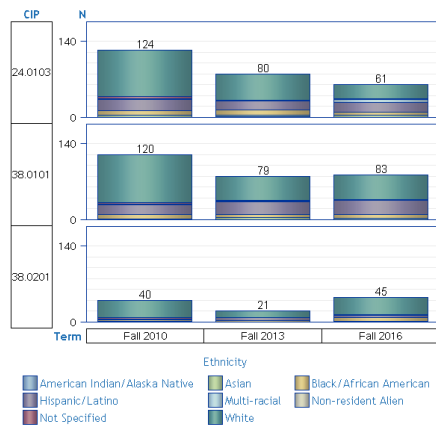
Headcount by Recent Student Type



CIP	CIP Descr.	Term	Full-Time		Part-Time		Total	
			N	%	N	%	N	%
24.0103	Humanities/Humanistic Studies	Fall 2010	81	65.32%	43	34.68%	124	100.00%
		Fall 2013	54	67.50%	26	32.50%	80	100.00%
		Fall 2016	39	63.93%	22	36.07%	61	100.00%
38.0101	Philosophy	Fall 2010	92	76.67%	28	23.33%	120	100.00%
		Fall 2013	76	96.20%	3	3.80%	79	100.00%
		Fall 2016	65	78.31%	18	21.69%	83	100.00%
38.0201	Religion/Religious Studies	Fall 2010	26	65.00%	14	35.00%	40	100.00%
		Fall 2013	16	76.19%	5	23.81%	21	100.00%
		Fall 2016	24	53.33%	21	46.67%	45	100.00%

CIP	CIP Descr.	Term	Beginner - FTIC		Early Admit		FCS Transfer		Other Undergrad Transfer		Post Bacc - Deg Seek		Total	
			N	%	N	%	N	%	N	%	N	%	N	%
24.0103	Humanities/Humanistic Studies	Fall 2010	39	31.45%	0	0.00%	80	64.52%	5	4.03%	0	0.00%	124	100.00%
		Fall 2013	25	31.25%	0	0.00%	54	67.50%	1	1.25%	0	0.00%	80	100.00%
		Fall 2016	19	31.15%	0	0.00%	40	65.77%	1	1.64%	0	0.00%	61	100.00%
38.0101	Philosophy	Fall 2010	53	44.17%	1	0.83%	59	49.17%	7	5.83%	1	0.83%	120	100.00%
		Fall 2013	44	55.70%	0	0.00%	32	40.51%	3	3.80%	0	0.00%	79	100.00%
		Fall 2016	30	36.14%	0	0.00%	47	56.63%	2	2.41%	4	4.82%	83	100.00%
38.0201	Religion/Religious Studies	Fall 2010	19	47.50%	0	0.00%	20	50.00%	1	2.50%	0	0.00%	40	100.00%
		Fall 2013	9	42.86%	0	0.00%	12	57.14%	0	0.00%	0	0.00%	21	100.00%
		Fall 2016	12	26.67%	0	0.00%	29	64.44%	0	0.00%	4	8.89%	45	100.00%

Headcount by Ethnicity



CIP	CIP Descr.	Term	American Indian/Alaska Native		Asian		Black/African American		Hispanic/Latino		Multi-racial		Non-resident Alien		Not Specified		White		Total	
			N	%	N	%	N	%	N	%	N	%	N	%	N	%	N	%	N	%
			24.0103	Humanities/Humanistic Studies	Fall 2010	-	-	4	3.23%	9	7.26%	20	16.13%	-	-	1	0.81%	4	3.23%	86
		Fall 2013	1	1.25%	3	3.75%	10	12.50%	16	20.00%	-	-	1	1.25%	1	1.25%	48	60.00%	80	100.00%
		Fall 2016	-	-	4	6.56%	5	8.20%	19	31.15%	5	8.20%	-	-	1	1.64%	27	44.26%	61	100.00%
38.0101	Philosophy	Fall 2010	-	-	2	1.67%	7	5.83%	18	15.00%	1	0.83%	1	0.83%	2	1.67%	89	74.17%	120	100.00%
		Fall 2013	-	-	4	5.06%	5	6.33%	24	30.38%	1	1.27%	-	-	2	2.53%	43	54.43%	79	100.00%
		Fall 2016	-	-	3	3.61%	7	8.43%	26	31.33%	-	-	-	-	1	1.20%	46	55.42%	83	100.00%
38.0201	Religion/Religious Studies	Fall 2010	-	-	1	2.50%	3	7.50%	1	2.50%	-	-	-	-	3	7.50%	32	80.00%	40	100.00%
		Fall 2013	-	-	-	-	3	14.29%	5	23.81%	-	-	-	-	-	-	13	61.90%	21	100.00%
		Fall 2016	-	-	1	2.22%	7	15.56%	5	11.11%	1	2.22%	-	-	-	-	31	68.89%	45	100.00%

Office of Institutional Research. Source: Student Instruction File. [Printed on: Wednesday, March 29, 2017 12:32:31 PM EDT]

## College of Arts & Humanities

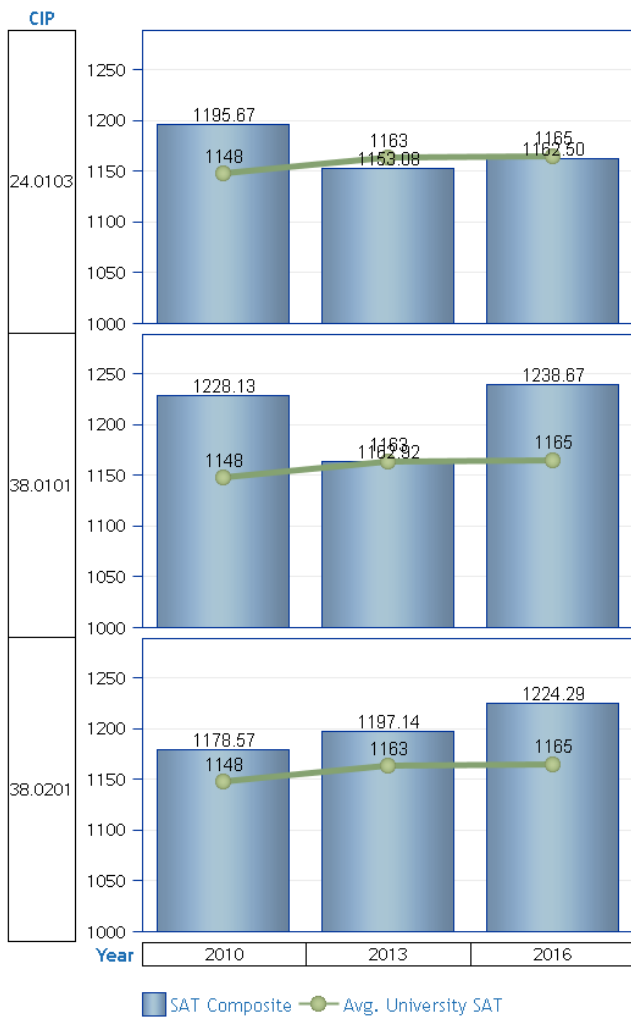
### Philosophy

#### Undergraduate

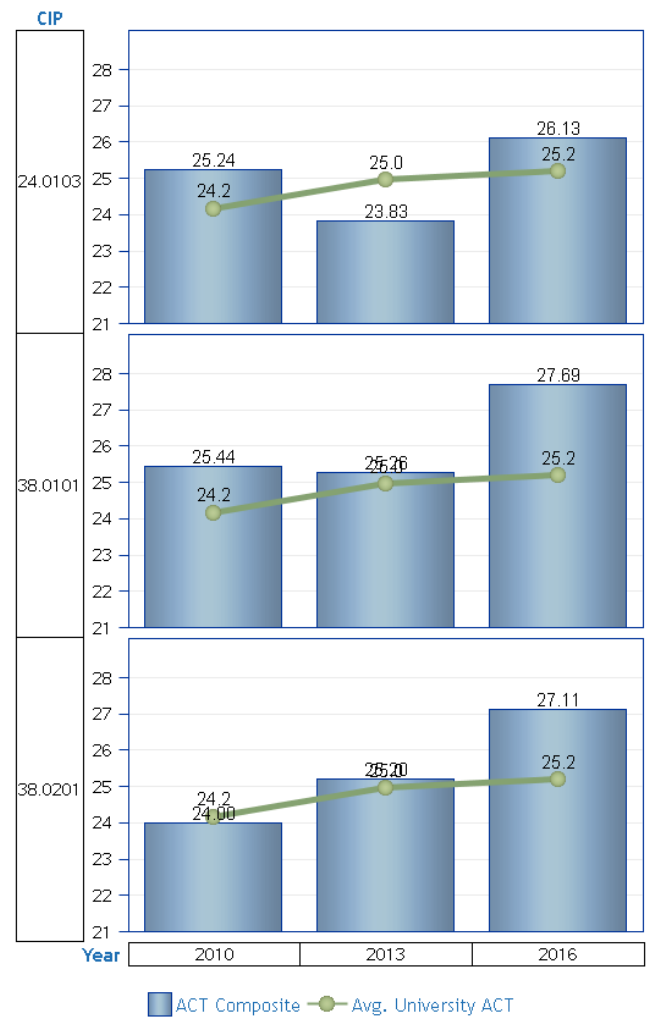
CIP	Plan
24.0103	Humanities & Cultural Studies
24.0103	Humanities BA
38.0101	Philosophy BA
38.0201	Religion & Cultural Studies BA

Bars represent averages for Program. Line represents averages for UCF Undergraduate Students.  
Includes current Juniors and Seniors who entered UCF as a FTIC and have valid scores on file.  
Program data excludes Pending Majors.

**Avg. SAT Composite Scores**



**Avg. ACT Composite Scores**



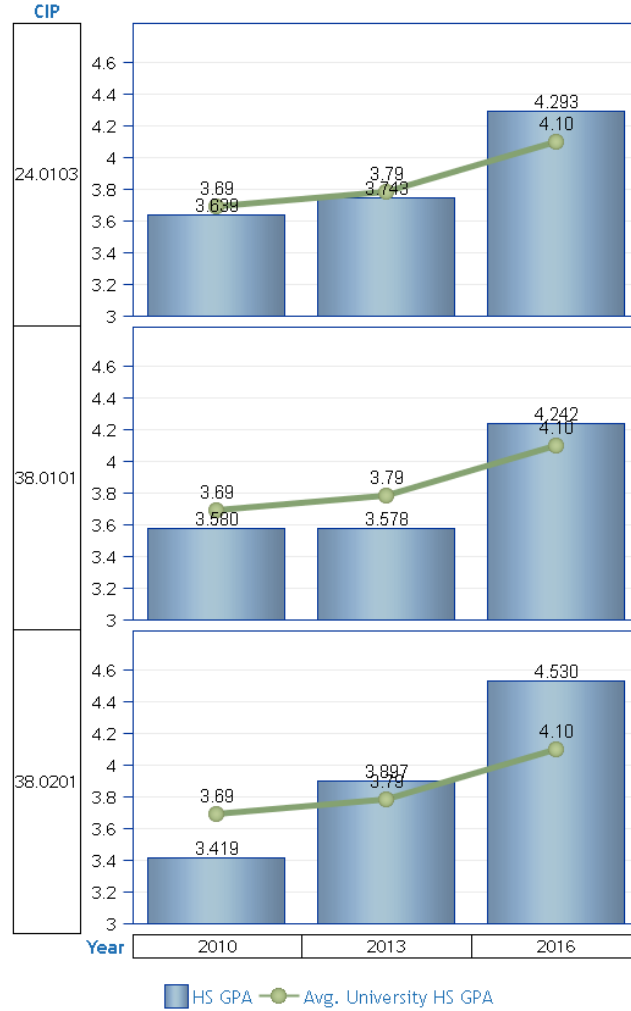
CIP	CIP Descr.	Semester	Year	N	SAT Composite	Avg. University SAT
24.0103	Humanities/Humanistic Studies	Fall	2010	30	1195.67	1148
			2013	13	1153.08	1163
			2016	8	1162.50	1165
38.0101	Philosophy	Fall	2010	32	1228.13	1148

CIP	CIP Descr.	Semester	Year	N	ACT Composite	Avg. University ACT
24.0103	Humanities/Humanistic Studies	Fall	2010	17	25.24	24.2
			2013	12	23.83	25.0
			2016	8	26.13	25.2
38.0101	Philosophy	Fall	2010	18	25.44	24.2

CIP	CIP Descr.	Semester	Year	N	SAT Composite	Avg. University SAT
38.0101	Philosophy	Fall	2013	24	1162.92	1163
			2016	15	1238.67	1165
38.0201	Religion/Religious Studies	Fall	2010	14	1178.57	1148
			2013	7	1197.14	1163
			2016	7	1224.29	1165

CIP	CIP Descr.	Semester	Year	N	ACT Composite	Avg. University ACT
38.0101	Philosophy	Fall	2013	19	25.26	25.0
			2016	13	27.69	25.2
38.0201	Religion/Religious Studies	Fall	2010	4	24.00	24.2
			2013	5	25.20	25.0
			2016	9	27.11	25.2

Avg. HS GPA



CIP	CIP Descr.	Semester	Year	N	HS GPA	Avg. University HS GPA
24.0103	Humanities/Humanistic Studies	Fall	2010	31	3.639	3.69
			2013	16	3.743	3.79
			2016	9	4.293	4.10
38.0101	Philosophy	Fall	2010	34	3.580	3.69
			2013	27	3.578	3.79
			2016	18	4.242	4.10
38.0201	Religion/Religious Studies	Fall	2010	14	3.419	3.69
			2013	7	3.897	3.79
			2016	9	4.530	4.10

## Undergraduate - Projections provided by UAPS on May 17, 2012

Projection Degree Level	CIP	Plan
Bachelors	24.0103	Humanities BA
Bachelors	38.0101	Philosophy BA
Bachelors	38.0201	Religious Studies BA

### Projected Headcount

Projection Degree Level	CIP	CIP Descr.	Plan	2017	2018	2019	2020
Bachelors	24.0103	Humanities/Humanistic Studies	Humanities BA	184	191	195	198
	38.0101	Philosophy	Philosophy BA	140	141	142	144
	38.0201	Religion/Religious Studies	Religious Studies BA	68	68	68	68
<b>Total</b>				<b>392</b>	<b>400</b>	<b>405</b>	<b>410</b>

### Projected Degrees

Projection Degree Level	CIP	CIP Descr.	Plan	2017	2018	2019	2020
Bachelors	24.0103	Humanities/Humanistic Studies	Humanities BA	45	47	48	48
	38.0101	Philosophy	Philosophy BA	29	29	30	30
	38.0201	Religion/Religious Studies	Religious Studies BA	21	21	21	21
<b>Total</b>				<b>95</b>	<b>97</b>	<b>99</b>	<b>99</b>

Office of Institutional Research. Source: UCF Enrollment and Degree Program Level Projections. *[Printed on: Wednesday, March 29, 2017 12:37:06 PM EDT]*